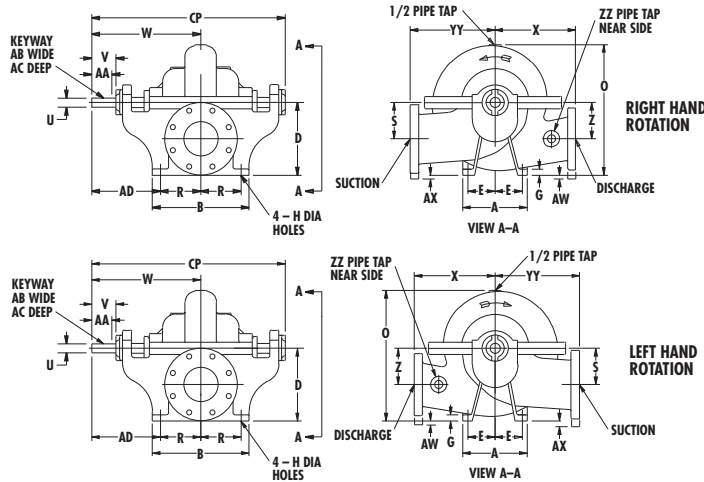


AURORA MODEL 481 PUMPS

SINGLE-STAGE FIRE SERVICE



| PUMP SIZE | | | SUCTION | POWER SERIES | DIMENSIONS | | | | | | | | | | | | | | | | | | | | | |
|-----------|-------|-----------|---------|--------------|------------|----------|--------------|-------------|------------|------------|---------------|-------------|--------------|------------|--------------|--------------|--------------|--------------|-------------|----------|----------|--------------|------------|------------|---------------|--------------|
| DISCH | MODEL | CASE BORE | | | A | B | D | E | G | H | O | R | S | U | V | W | X | Z | AA | AB | AC | AD | AW | AX | CP | YY |
| 2-1/2 | 481 | 10B | 3 | 2 | 8 (203) | 10 (254) | 8 (203) | 3-1/2 (89) | 3/4 (19) | 5/8 (16) | 16 (406) | 4 (102) | 4 (102) | 1-1/8 (29) | 2-7/8 (73) | 13-1/2 (343) | 9-3/4 (248) | 4 (102) | 2-1/8 (54) | 1/4 (6) | 1/8 (3) | 9-1/2 (241) | - | - | 24 (610) | 10 (254) |
| 3 | 481 | 10 | 4 | 2 | 8 (203) | 10 (254) | 9 (229) | 3-1/2 (89) | 3/4 (19) | 5/8 (16) | 16-1/4 (413) | 4 (102) | 4-1/2 (114) | 1-1/8 (29) | 2-7/8 (73) | 13-1/2 (343) | 10 (254) | 4-1/2 (114) | 2-1/8 (54) | 1/4 (6) | 1/8 (3) | 9-1/2 (241) | - | 1/2 (13) | 24 (610) | 11 (279) |
| 4 | 481 | 11 | 5 | 3 | 10 (254) | 12 (305) | 10 (254) | 4-1/4 (108) | 7/8 (22) | 3/4 (19) | 18-3/8 (467) | 5 (127) | 5 (127) | 1-3/8 (35) | 3 (76) | 14-1/2 (368) | 11-1/4 (286) | 5 (127) | 2-3/8 (60) | 3/8 (10) | 3/16 (5) | 9-1/2 (241) | - | 1/2 (13) | 26 (660) | 12-3/4 (324) |
| 4 | 481 | 11 | 5 | 3 | 10 (254) | 12 (305) | 10 (254) | 4-1/4 (108) | 7/8 (22) | 3/4 (19) | 18-3/8 (467) | 5 (127) | 5 (127) | 1-3/8 (35) | 3 (76) | 14-1/2 (368) | 12 (305) | 5 (127) | 2-3/8 (60) | 3/8 (10) | 3/16 (5) | 9-1/2 (241) | - | 1/2 (13) | 26 (660) | 12-3/4 (324) |
| 4 | 481 | 15 | 5 | 3 | 10 (254) | 12 (305) | 11 (279) | 4-1/4 (108) | 7/8 (22) | 3/4 (19) | 21-1/8 (537) | 5 (127) | 5-1/2 (140) | 1-3/8 (35) | 3 (76) | 14-1/2 (368) | 13 (330) | 5-1/2 (140) | 2-3/8 (60) | 3/8 (10) | 3/16 (5) | 9-1/2 (241) | - | - | 26 (660) | 14 (356) |
| 5 | 481 | 11 | 6 | 4 | 10 (254) | 12 (305) | 11 (279) | 4-1/4 (108) | 7/8 (22) | 3/4 (19) | 19-3/4 (502) | 5 (127) | 5-1/2 (140) | 1-1/2 (38) | 3-1/2 (89) | 16 (406) | 11-1/4 (286) | 5-1/2 (140) | 2-7/8 (73) | 3/8 (10) | 3/16 (5) | 11 (279) | - | 3/4 (19) | 28-1/2 (724) | 13-1/4 (337) |
| 5 | 481 | 15 | 6 | 4 | 10 (254) | 12 (305) | 12-1/2 (318) | 4-1/4 (108) | 7/8 (22) | 3/4 (19) | 22-1/2 (572) | 5 (127) | 6-1/4 (159) | 1-1/2 (38) | 3-1/2 (89) | 16 (406) | 13-1/4 (337) | 6-1/4 (159) | 2-7/8 (73) | 3/8 (10) | 3/16 (5) | 11 (279) | - | - | 28-1/2 (724) | 15 (381) |
| 5 | 481 | 17 | 6 | 4 | 10 (254) | 12 (305) | 12-1/2 (318) | 4-1/4 (108) | 7/8 (22) | 3/4 (19) | 22-1/2 (572) | 5 (127) | 6-1/4 (159) | 1-1/2 (38) | 3-1/2 (89) | 16 (406) | 14 (356) | 6-1/4 (159) | 2-7/8 (73) | 3/8 (10) | 3/16 (5) | 11 (279) | - | - | 28-1/2 (724) | 15 (381) |
| 6 | 481 | 11 | 8 | 4 | 10 (254) | 12 (305) | 12-1/2 (318) | 4-1/4 (108) | 7/8 (22) | 3/4 (19) | 21-7/8 (556) | 5 (127) | 6-1/4 (159) | 1-1/2 (38) | 3-1/2 (89) | 16 (406) | 11-3/4 (298) | 6-1/4 (159) | 2-7/8 (73) | 3/8 (10) | 3/16 (5) | 11 (279) | - | 1-1/4 (32) | 28-1/2 (724) | 14-1/2 (368) |
| 6 | 481 | 11HH | 8 | 4A | 12 (305) | 14 (368) | 16-1/2 (419) | 5 (127) | 1-1/4 (32) | 7/8 (22) | 25-3/4 (654) | 6 (152) | 8-5/8 (219) | 1-1/2 (38) | 3-3/8 (86) | 18-1/8 (460) | 10 (254) | 8-5/8 (219) | 2-7/8 (73) | 3/8 (10) | 3/16 (5) | 12-1/8 (308) | - | - | 32-7/8 (835) | 15 (381) |
| 6 | 481 | 14HH | 8 | 5A | 12 (305) | 14 (368) | 16-1/2 (419) | 5 (127) | 1-1/4 (32) | 7/8 (22) | 27 (686) | 6 (152) | 7-1/2 (191) | 1-3/4 (44) | 4-1/8 (105) | 20-1/2 (519) | 15 (381) | 7-1/2 (191) | 2-7/8 (73) | 3/8 (10) | 3/16 (5) | 14-1/2 (368) | - | - | 36-3/4 (933) | 17 (432) |
| 6 | 481 | 15 | 8 | 5 | 12 (305) | 14 (356) | 13-1/2 (343) | 5 (127) | 1 (25) | 7/8 (22) | 24-7/8 (632) | 6 (152) | 6-3/4 (171) | 1-3/4 (44) | 4 (102) | 18 (457) | 14-1/4 (362) | 6-3/4 (171) | 2-7/8 (73) | 3/8 (10) | 3/16 (5) | 12 (305) | - | 3/4 (19) | 32 (813) | 16-3/4 (425) |
| 6 | 481 | 18 | 8 | 5 | 12 (305) | 14 (356) | 14-3/4 (375) | 5 (127) | 3/4 (19) | 7/8 (22) | 27-1/4 (692) | 6 (152) | 8 (203) | 1-3/4 (44) | 4 (102) | 18 (457) | 16 (406) | 2-7/8 (73) | 3/8 (10) | 3/16 (5) | 12 (305) | - | 3/4 (19) | 32 (813) | 18 (457) | |
| 6 | 481 | 20 | 8 | 5 | 12 (305) | 14 (356) | 14-3/4 (375) | 5 (127) | 1 (25) | 7/8 (22) | 27-3/4 (705) | 6 (152) | 8 (203) | 1-3/4 (44) | 4 (102) | 18 (457) | 15-3/4 (400) | 2-7/8 (73) | 3/8 (10) | 3/16 (5) | 12 (305) | - | 3/4 (19) | 32 (813) | 18 (457) | |
| 8 | 481 | 12 | 10 | 5 | 12 (305) | 14 (356) | 14-3/4 (375) | 5 (127) | 1-1/4 (32) | 7/8 (22) | 26-3/8 (670) | 6 (152) | 8 (203) | 1-3/4 (44) | 4 (102) | 18 (457) | 17 (432) | 2-7/8 (73) | 3/8 (10) | 3/16 (5) | 12 (305) | - | 1-3/4 (44) | 2 (813) | 17-3/4 (451) | |
| 8 | 481 | 17 | 10 | 5 | 12 (305) | 14 (356) | 14-3/4 (375) | 5 (127) | 1-1/4 (32) | 7/8 (22) | 27-1/8 (689) | 6 (152) | 8 (203) | 1-3/4 (44) | 4 (102) | 18 (457) | 17 (432) | 2-7/8 (73) | 3/8 (10) | 3/16 (5) | 12 (305) | - | 3/4 (19) | 2 (813) | 17-3/4 (451) | |
| 8 | 481 | 21 | 10 | 6B | 20 (508) | 17 (432) | 18-1/2 (470) | 9 (229) | 1 (25) | 15/16 (24) | 32-1/2 (826) | 7-1/2 (191) | 9-1/2 (241) | 2-1/8 (54) | 5-7/16 (138) | 21-7/8 (556) | 18 (457) | 9-1/2 (241) | 4-3/4 (121) | 1/2 (13) | 1/4 (6) | 14-3/8 (365) | - | - | 38 (965) | 21 (533) |
| 10 | 481 | 15 | 12 | 6B | 15 (381) | 22 (559) | 25 (635) | 6-1/2 (165) | 1 (25) | 7/8 (22) | 38-1/2 (978) | 10 (254) | 13-1/2 (343) | 2-1/8 (54) | 5-7/16 (138) | 21-7/8 (556) | 17 (432) | 13-1/2 (343) | 4-3/4 (121) | 1/2 (13) | 1/4 (6) | 11-7/8 (301) | - | - | 38 (965) | 20 (508) |
| 10 | 481 | 18 | 12 | 6B | 15 (381) | 22 (559) | 25 (635) | 6-1/2 (165) | 1 (25) | 7/8 (22) | 39-1/2 (1003) | 10 (254) | 13-1/2 (343) | 2-1/8 (54) | 5-7/16 (138) | 21-7/8 (556) | 18 (457) | 13-1/2 (343) | 4-3/4 (121) | 1/2 (13) | 1/4 (6) | 11-7/8 (301) | - | - | 38 (965) | 22 (559) |
| 10 | 481 | 18D | 12 | 7A | 15 (381) | 22 (559) | 25 (635) | 6-1/2 (165) | 1-1/4 (32) | 7/8 (22) | 40-1/2 (1029) | 10 (254) | 12-1/4 (311) | 2-1/8 (54) | 5 (127) | 24-1/4 (616) | 20 (508) | 12-1/4 (311) | 6-5/8 (168) | 1/2 (13) | 1/4 (6) | 14-1/4 (362) | - | - | 43 (1092) | 24 (610) |
| 12 | 481 | 18 | 14 | 7 | 15 (381) | 22 (559) | 24 (610) | 6-1/2 (165) | 1 (25) | 7/8 (22) | 40-1/8 (1019) | 10 (254) | 15 (381) | 2-1/2 (64) | 6-5/8 (168) | 25-1/4 (641) | 18 (457) | 15 (381) | 5 (127) | 5/8 (16) | 5/16 (8) | 15-1/4 (387) | - | - | 43-7/8 (1114) | 23 (584) |

NOTES

- All dimensions are in inches (mm).
- Dimensions may vary $\pm 3/8"$ (10).
- Not for construction purposes unless certified.
- Suction & discharge flanges ANSI Standard flat face.

| | | |
|---|---|---|
| STD. 125# SUCTION AND DISCHARGE FLANGES | OPT. 125# SUCTION FLANGE, 250# DISCHARGE FLANGE | OPT. 250# SUCTION AND DISCHARGE FLANGES |
|---|---|---|

* Pump sizes 6-481-11HH & 6-481-14HH are furnished as standard with 125# suction flange and 250# discharge flange.

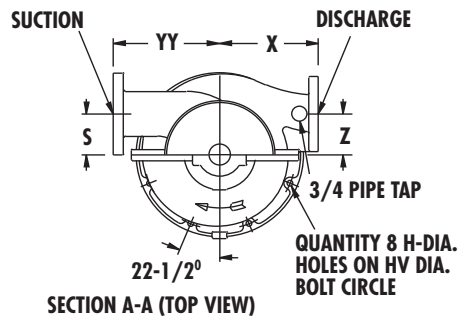
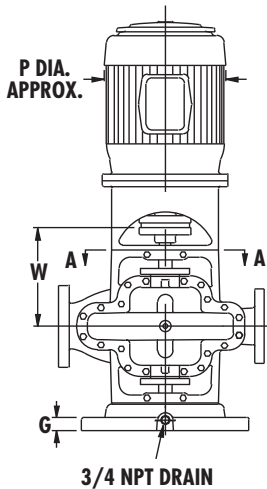
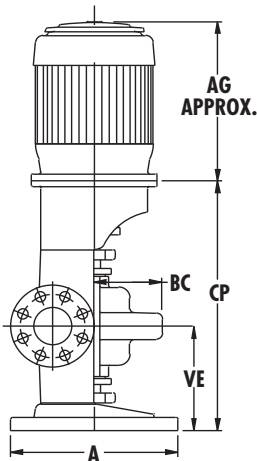
AURORA MODEL 483 PUMPS

Date April 2003

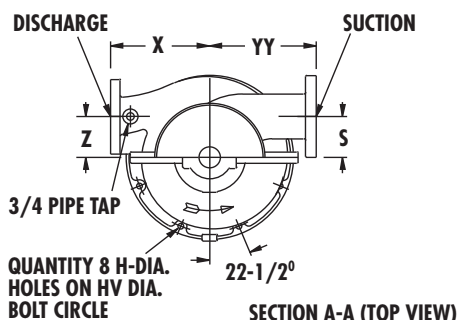
SINGLE STAGE FIRE PUMPS

Supersedes Section 912 Page 202

Dated July 2001



RIGHT HAND ROTATION



LEFT HAND ROTATION

| BASE | 1 | 2 | 3 |
|------|-----------------|---------------|-------------|
| A | 18 (457) | 22 (559) | 30 (762) |
| G | 1-3/4 (44) | 1-3/4 (44) | 2 (51) |
| H | 3/4 (19) | 3/4 (19) | 7/8 (22) |
| HW | 16-1/4 (413) | 20 (508) | 28 (711) |



STANDARD
125# SUCTION AND
DISCHARGE
FLANGES



OPTIONAL
125# SUCTION AND
250# DISCHARGE
FLANGES



OPTIONAL
250# SUCTION AND
250# DISCHARGE
FLANGES

| MOTOR FRAME | 213HP | 215HP | 254HP | 256HP | 284HP | 286HP | 324HP | 326HP | 364HP | 365HP | 404HP | 405HP | 444HP | 445HP |
|----------------|-------|-------|-------|-------|-------|-------|-------|-------|-------|-------|-------|-------|-------|-------|
| | P | 10 | 11 | 12 | 12 | 14 | 14 | 16 | 16 | 21 | 21 | 22 | 22 | 24 |
| AG | 18 | 18 | 20 | 22 | 23 | 24 | 37 | 37 | 40 | 40 | 45 | 45 | 43 | 43 |

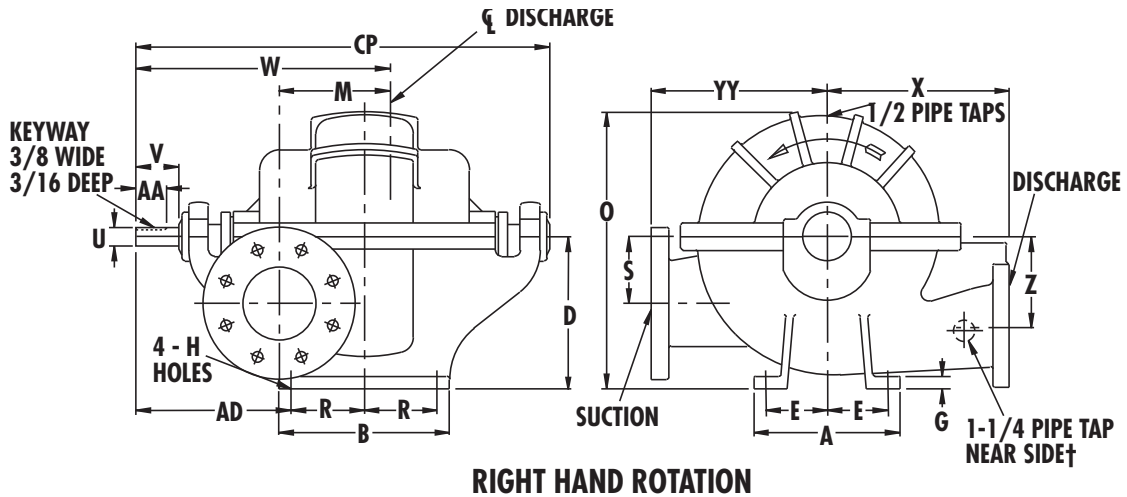
| PUMP SIZE | | | SUCTION | POWER SERIES | BASE | S | W | X | Z | BC | VE | YY | CP | | | | | | | | | | | | | |
|-----------|-------|-----------|---------|--------------|------|----------------|-----------------|-----------------|----------------|-------------------|-------------|-----------------|----|----|----|----|----|----|----|----|----|----|----|----|----|----|
| DISCH | MODEL | CASE BORE | | | | | | | | | | | 30 | 30 | 30 | 30 | 32 | 32 | 32 | 32 | 32 | 32 | 32 | 32 | 32 | 32 |
| 2-1/2 | 483 | 10 | 3 | 2 | 1 | 4 (102) | 13-1/2 (343) | 9-3/4 (248) | 4 (102) | 8 (203) | 13 (330) | 10 (254) | 30 | 30 | 30 | 30 | 32 | 32 | 32 | 32 | | | | | | |
| 3 | 483 | 10 | 4 | 2 | 1 | 4-1/2 (114) | 13-1/2 (343) | 10 (254) | 4-1/2 (114) | 7-3/16 (183) | 13 (330) | 11 (279) | 30 | 30 | 30 | 30 | 32 | 32 | 32 | 32 | | | | | | |
| 4 | 483 | 11 | 5 | 3 | 2 | 5 (127) | 14-1/2 (368) | 11-1/4 (286) | 5 (127) | 8-5/16 (211) | 14 (356) | 12-3/4 (324) | | | 33 | 33 | 35 | 35 | 35 | 35 | 35 | 35 | 35 | 35 | 35 | |
| 4 | 483 | 15 | 5 | 3 | 2 | 5-1/2 (140) | 14-1/2 (368) | 13 (330) | 5-1/2 (140) | 9 (229) | 14 (356) | 14 (356) | | | 33 | 35 | 35 | 35 | 35 | 35 | 35 | 35 | 35 | 35 | 35 | |
| 5 | 483 | 11 | 6 | 4 | 2 | 5-1/2 (140) | 16 (406) | 11-1/4 (286) | 5-1/2 (140) | 8-3/4 (222) | 15 (381) | 13-1/4 (337) | 35 | 35 | 37 | 37 | 37 | 37 | 37 | 37 | 37 | 37 | 37 | 37 | | |
| 5 | 483 | 15 | 6 | 4 | 2 | 6-1/4 (159) | 16 (406) | 13-1/4 (337) | 6-1/4 (159) | 10-1/16 (256) | 15 (381) | 15 (381) | | | | | 37 | 37 | 37 | 37 | 37 | 37 | 37 | 37 | | |
| 5 | 483 | 17 | 6 | 4 | 2 | 6-1/4 (159) | 16 (406) | 14 (356) | 6-1/4 (159) | 10-1/16 (256) | 15 (381) | 15 (381) | | | | | 37 | 37 | 37 | 37 | 37 | 37 | 37 | | | |
| 6 | 483 | 11 | 8 | 4 | 2 | 6-1/4 (159) | 16 (406) | 11-3/4 (298) | 6-1/4 (159) | 9-1/4 (935) | 15 (381) | 14-1/2 (368) | | | 35 | 37 | 37 | 37 | 37 | 37 | 37 | 37 | 37 | 37 | | |
| 6 | 483 | 15 | 8 | 5 | 3 | 6-3/4 (171) | 18 (457) | 14-1/4 (362) | 6-3/4 (171) | 11-5/16 (287) | 17 (432) | 16-3/4 (425) | | | | | 41 | 41 | 41 | 41 | 41 | 41 | 41 | 41 | | |
| 6 | 483 | 18 | 8 | 5 | 3 | 8 (203) | 18 (457) | 16 (406) | 8 (203) | 12-1/2 (318) | 17 (432) | 18 (457) | | | | | 41 | 41 | 41 | 41 | 41 | 41 | 41 | 41 | | |
| 6 | 483 | 20 | 8 | 5 | 3 | 8 (203) | 18 (457) | 15-3/4 (400) | 8 (203) | 12-15/16 (239) | 17 (432) | 18 (457) | | | | | 41 | 41 | 41 | 41 | 41 | 41 | 41 | 41 | | |
| 8 | 483 | 12 | 10 | 5 | 3 | 8 (203) | 18 (457) | 17 (432) | 9 (229) | 11-9/16 (294) | 17 (432) | 17-3/4 (451) | | | | | 41 | 41 | 41 | 41 | 41 | 41 | 41 | 41 | | |
| 8 | 483 | 17B | 10 | 5 | 3 | 8 (203) | 18 (457) | 17 (432) | 8 (203) | 12-3/8 (314) | 17 (432) | 17-3/4 (451) | | | | | | | | | | | | 41 | 41 | 41 |

NOTES

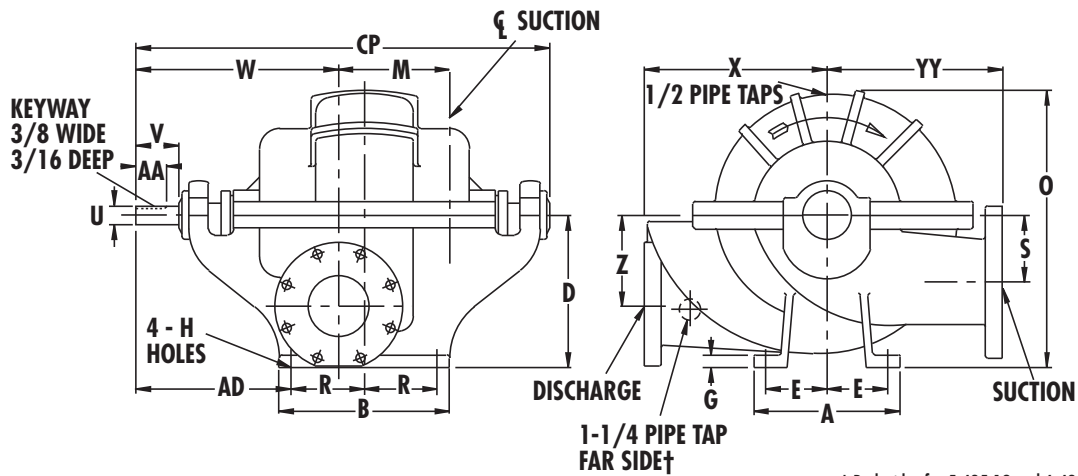
1. All dimensions are in inches (mm).
2. Dimensions may vary ± 3/8" (10).
3. Not for construction purposes unless certified.
4. Suction and discharge flanges are ANSI standard flat face.
5. Motor dimensions "AG" and "P" will vary based on manufacturer and style of motor. Conduit box is shown in approximate location

AURORA MODEL 485 PUMPS

MULTI-STAGE FIRE SERVICE



RIGHT HAND ROTATION



LEFT HAND ROTATION

† Both sides for 5-485-12 and 6-485-12

| PUMP SIZE | | | SUCTION | POWER SERIES | A | B | D | E | G | H | M | O | R | S | U | V | RIGHT HAND ROTATION | LEFT HAND ROTATION | X | Z | AA | AD | CP | YY |
|-----------|-------|-----------|---------|--------------|-------------|-------------|-----------------|----------------|-------------|-------------|----------------|-----------------|----------------|----------------|---------------|---------------|---------------------|--------------------|-------------|----------------|---------------|-----------------|-----------------|------------------|
| DISCH | MODEL | CASE BORE | | | | | | | | | | | | | | | W | W | | | | | | |
| 4 | 485 | 15 | 5 | 3 | 10 (254) | 12 (304) | 11 (279) | 4-1/4 (108) | 7/8 (22) | 3/4 (19) | 7-1/8 (181) | 23 (584) | 5 (127) | 5 (127) | 1-3/8 (35) | 3 (76) | 18-7/8 (479) | 15-1/8 (384) | 13 (330) | 6-1/2 (165) | 2 (51) | 12 (304) | 31 (787) | 13-1/2 (343) |
| 5 | 485 | 12 | 5 | 4A | 15 (381) | 16 (406) | 14 (356) | 6-1/2 (165) | 1 (25) | 7/8 (22) | 6-5/8 (168) | 24-1/4 (616) | 7 (179) | 7 (179) | 1-1/2 (38) | 3-5/8 (92) | 20-7/8 (530) | 18-1/8 (460) | 13 (330) | 7 (179) | 2-1/2 (64) | 12-1/2 (318) | 35-3/8 (899) | 13 (330) |
| 5 | 485 | 15 | 6 | 4 | 12 (304) | 14 (356) | 12-1/2 (318) | 5 (127) | 1 (25) | 7/8 (22) | 9-1/8 (232) | 24-1/2 (622) | 6 (152) | 5-1/2 (140) | 1-1/2 (38) | 3-1/2 (89) | 21-1/8 (537) | 16-7/8 (429) | 15 (381) | 7-1/2 (191) | 2 (51) | 13 (330) | 34-1/2 (876) | 15-7/16 (392) |
| 6 | 485 | 12 | 6 | 5A | 16 (406) | 19 (483) | 15 (381) | 7 (179) | 1 (25) | 7/8 (22) | 7-1/2 (191) | 26-1/4 (667) | 8-1/2 (216) | 8 (203) | 1-3/4 (44) | 4 (102) | 22-7/8 (581) | 19-5/8 (498) | 14 (356) | 8 (203) | 2-3/4 (70) | 12-3/4 (324) | 38-1/2 (978) | 14 (356) |
| 6 | 485 | 16/168 | 8 | 5 | 12 (305) | 14 (356) | 16.50 (419) | 5 (127) | 1 (25) | .88 (22) | 10.50 (267) | 33.50 (851) | 6 (152) | 8.25 (210) | 1.75 (44) | 4 (102) | 23.63 (600) | 18.38 (467) | 19 (483) | 7.75 (197) | 2.88 (73) | 15 (381) | 37.88 (962) | 17 (432) |
| 6 | 485 | 17 | 8 | 5 | 12 (304) | 14 (356) | 14-3/4 (375) | 5 (127) | 1 (25) | 7/8 (22) | 11 (279) | 28-1/4 (718) | 6 (152) | 7 (179) | 1-3/4 (44) | 4 (102) | 24-1/2 (622) | 17-1/2 (445) | 16 (406) | 9 (229) | 2-7/8 (73) | 15 (381) | 38 (965) | 16-1/2 (419) |

NOTES

- All dimensions are in inches (mm).
- Dimensions may vary ± 3/8" (10).
- Not for construction purposes unless certified.
- Suction & discharge flanges ANSI Standard flat face.

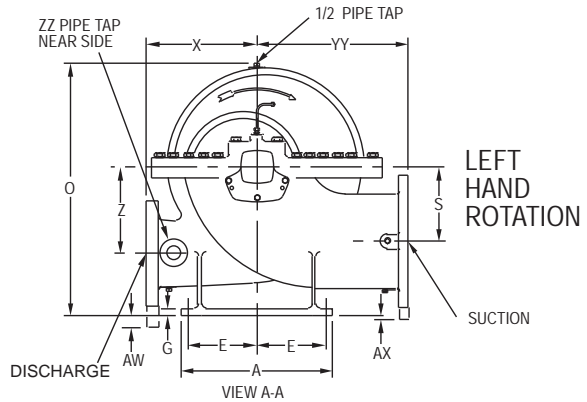
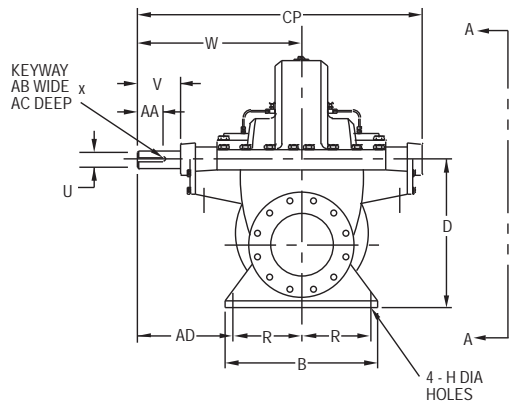
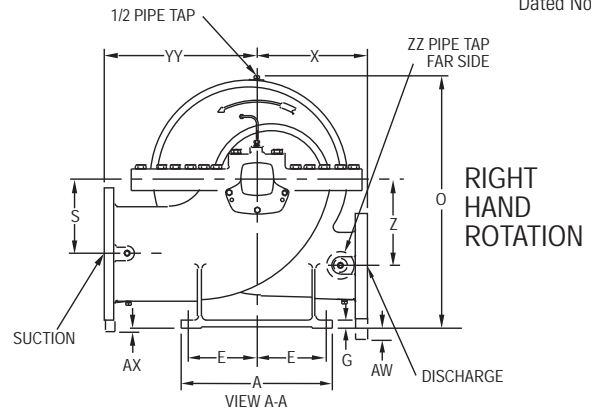
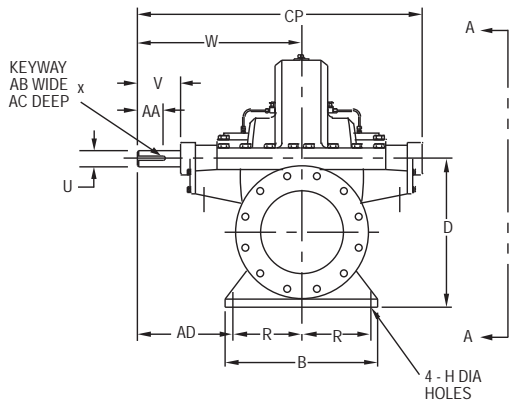
| | |
|--|--|
| STD. *125# SUCTION FLANGE, **250# DISCHARGE FLANGE | OPT. *250# SUCTION AND DISCHARGE FLANGES |
|--|--|

* 150# AND 300# OR 300# AND 300# SUCTION AND DISCHARGE DUCTILE IRON FOR 5-485-12 AND 6-485-12

THIS PAGE LEFT INTENTIONALLY BLANK

AURORA MODEL 491 PUMPS

SINGLE STAGE FIRE SERVICE



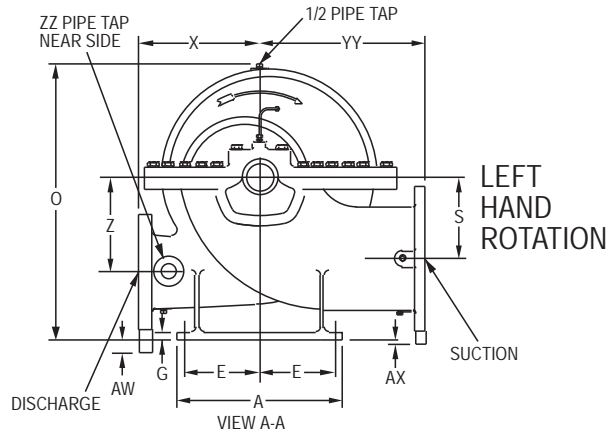
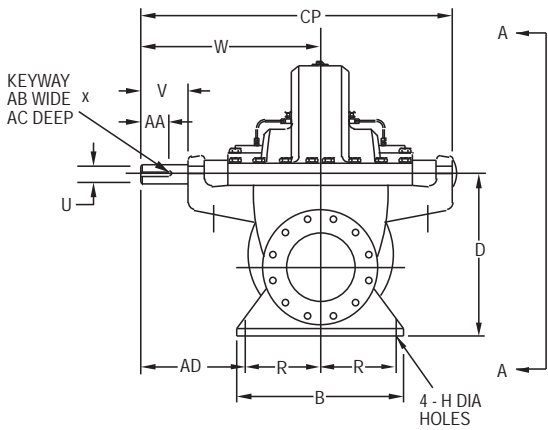
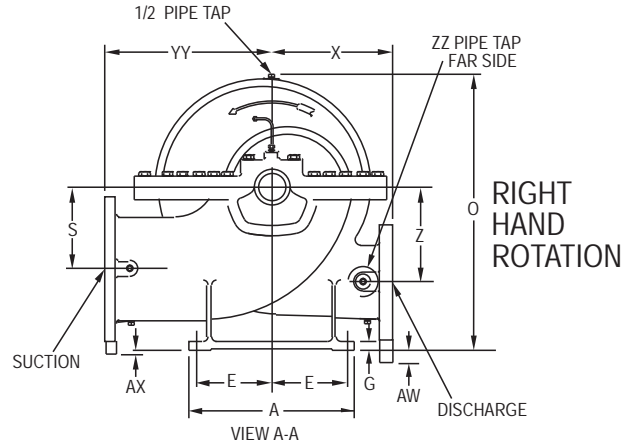
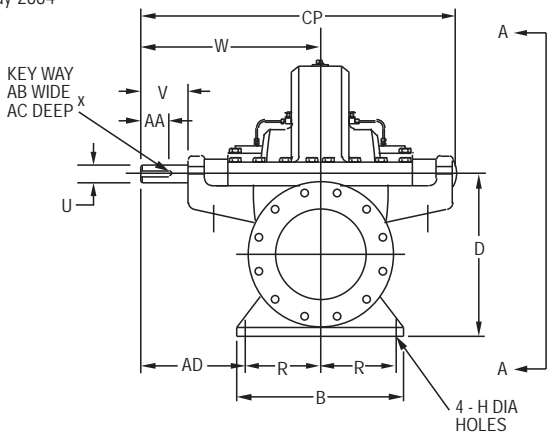
| PUMP SIZE | | CASE BORE | SUCTION | DIMENSIONS (INCHES) | | | | | | | | | | | | | | | | | | | | | | |
|-----------|-------|-----------|---------|---------------------|-----------------|-----------------|----------------|---------------|-------------|------------------|----------------|-----------------|---------------|----------------|------------------|-----------------|-----------------|---------------|-------------|-------------|------------------|-------------|---------------|-------------------|-----------------|-----|
| DISCH | MODEL | | | A | B | D | E | G | H | O | R | S | U | V | W | X | Z | AA | AB | AC | AD | AW | AX | CP | YY | ZZ |
| 3 | 491 | 9C | 5 | 14-1/2 (368) | 14-1/2 (368) | 12 (304) | 6-1/4 (159) | 1 (25) | 7/8 (22) | 18-7/8 (479) | 6-1/4 (159) | 6-1/8 (156) | 1-1/8 (28) | 3-5/16 (84) | 14-5/8 (371) | 11 (279) | 6-1/8 (155) | 2-1/2 (63) | 1/4 (6) | 1/8 (3) | 8-3/8 (212) | - | - | 25-15/16 (658) | 12 (304) | |
| 4 | 491 | 8A | 6 | 11 (279) | 11 (279) | 9-3/4 (245) | 4-5/8 (117) | 3/4 (25) | 5/8 (16) | 16-1/8 (410) | 4-5/8 (117) | 5-3/4 (146) | 1-1/8 (28) | 3-1/4 (83) | 14-5/8 (371) | 10 (254) | 5-1/2 (140) | 2-1/2 (63) | 1/4 (6) | 1/8 (3) | 10 (254) | 3/4 (19) | 2-1/4 (57) | 25-15/16 (658) | 11-1/4 (285) | |
| 4 | 491 | 11A&C | 6 | 14-1/2 (368) | 14-1/2 (368) | 13-3/4 (349) | 6-1/4 (159) | 1 (25) | 7/8 (22) | 22 (559) | 6-1/4 (159) | 6-7/8 (174) | 1-1/2 (38) | 3-1/2 (88) | 16-5/8 (422) | 11-1/4 (285) | 7-1/8 (180) | 2-3/8 (60) | 3/8 (9) | 3/16 (4) | 10-3/8 (263) | - | - | 29-11/16 (754) | 14 (355) | 3/4 |
| 4 | 491 | 14C | 6 | 18 (457) | 18 (457) | 13-3/4 (349) | 8 (203) | 1-1/8 (28) | 7/8 (22) | 23-5/8 (600) | 8 (203) | 6-7/8 (174) | 1-1/2 (38) | 3-1/2 (88) | 17-5/8 (447) | 13 (330) | 8-3/8 (212) | 2-3/8 (60) | 3/8 (9) | 3/16 (4) | 9-5/8 (244) | - | - | 31-11/16 (804) | 15-1/4 (387) | |
| 5 | 491 | 14A | 8 | 18 (457) | 18 (457) | 16-1/4 (412) | 8 (203) | 1-1/8 (28) | 7/8 (22) | 27-1/16 (687) | 8 (203) | 8-1/4 (209) | 1-1/2 (38) | 3-1/2 (88) | 17-5/8 (447) | 13-1/2 (342) | 9-3/4 (247) | 2-3/8 (60) | 3/8 (9) | 3/16 (4) | 9-5/8 (244) | - | - | 31-11/16 (804) | 17-1/4 (438) | |
| 5 | 491 | 18A | 8 | 18 (457) | 18 (457) | 16-1/4 (412) | 8 (203) | 1-1/8 (28) | 7/8 (22) | 28-3/8 (720) | 8 (203) | 8-1/8 (206) | 2-1/8 (53) | 4-3/8 (111) | 18-7/8 (479) | 15 (381) | 10-5/8 (268) | 3-1/2 (88) | 1/2 (12) | 1/4 (6) | 10-7/8 (276) | - | - | 33-3/8 (847) | 18-3/4 (476) | |
| 6 | 491 | 12A | 6 | 14-1/2 (368) | 14-1/2 (368) | 13-3/4 (349) | 6-1/4 (159) | 1 (25) | 7/8 (22) | 22 (559) | 6-1/4 (159) | 6-7/8 (174) | 1-1/2 (38) | 3-1/2 (88) | 16-5/8 (422) | 20-1/2 (520) | 7-1/8 (180) | 2-3/8 (60) | 3/8 (9) | 3/16 (4) | 10-3/8 (263) | - | - | 29-11/16 (754) | 14 (355) | |
| 6 | 491 | 14C | 10 | 18 (457) | 18 (457) | 18-3/4 (476) | 8 (203) | 1-1/8 (28) | 7/8 (22) | 30-1/16 (763) | 8 (203) | 9-3/8 (238) | 2-1/8 (53) | 4-3/8 (111) | 20-1/8 (511) | 13-1/4 (337) | 10 (254) | 3-1/2 (88) | 1/2 (12) | 1/4 (6) | 12-1/8 (308) | - | - | 35-7/8 (911) | 18 (457) | |
| 6 | 491 | 18C | 10 | 22 (558) | 22 (558) | 18-3/4 (476) | 10 (254) | 1-1/8 (28) | 7/8 (22) | 32 (813) | 10 (254) | 9-3/8 (238) | 2-1/8 (53) | 4-3/8 (111) | 20-1/8 (511) | 16 (406) | 11-3/4 (295) | 3-1/2 (88) | 1/2 (12) | 1/4 (6) | 10-1/8 (263) | - | - | 35-7/8 (911) | 20 (508) | |
| 6 | 491 | 19A | 10 | 22 (558) | 22 (558) | 18-3/4 (476) | 10 (254) | 1-1/8 (28) | 7/8 (22) | 33-5/16 (846) | 10 (254) | 9-3/8 (238) | 2-1/2 (63) | 6 (152) | 22-5/8 (574) | 18 (457) | 12-1/8 (307) | 4 (101) | 5/8 (15) | 5/16 (7) | 12-5/8 (320) | - | - | 39-1/4 (996) | 22 (558) | 1 |
| 8 | 491 | 14A | 12 | 22 (558) | 22 (558) | 21-1/2 (546) | 10 (254) | 1-1/8 (28) | 7/8 (22) | 33-5/8 (854) | 10 (254) | 10-3/4 (273) | 2-1/8 (53) | 4-3/8 (111) | 20-1/2 (520) | 16 (406) | 10-3/4 (273) | 3-1/2 (88) | 1/2 (12) | 1/4 (6) | 10-1/2 (266) | - | - | 36-5/8 (930) | 22 (558) | |
| 8 | 491 | 18A | 12 | 22 (558) | 22 (558) | 21-1/2 (546) | 10 (254) | 1-1/8 (28) | 7/8 (22) | 36 (914) | 10 (254) | 10-3/4 (273) | 2-1/2 (63) | 6 (152) | 23-3/4 (603) | 16 (406) | 12-1/2 (317) | 4 (101) | 5/8 (15) | 5/16 (7) | 13-3/4 (349) | - | - | 41-1/2 (1054) | 22 (558) | |
| 10 | 491 | 20 | 16 | 22 (558) | 22 (558) | 24 (609) | 10 (254) | 1-1/4 (31) | 7/8 (22) | 40-3/8 (1025) | 10 (254) | 13 (330) | 2-3/4 (69) | 6-1/2 (165) | 25-9/16 (649) | 23 (584) | 14-1/4 (361) | 5 (127) | 5/8 (15) | 5/16 (7) | 15-9/16 (395) | - | 1-3/4 (44) | 44-9/16 (1131) | 25 (635) | |

NOTES

- All dimensions are in inches.
- Dimensions may vary $\pm 3/8"$.
- Not for construction purposes unless certified.
- Suction & discharge flanges ANSI Standard flat face.

*STD. 125# SUCTION FLANGE, 250# DISCHARGE FLANGE FOR 6-491-12A AND 10-491-20

| STD. 125# SUCTION AND DISCHARGE FLANGES* | OPT. 125# SUCTION FLANGE, 250# DISCHARGE FLANGE | OPT. 250# SUCTION AND DISCHARGE FLANGES |
|--|---|---|
|--|---|---|



| PUMP SIZE | | CASE BORE | NODIUS | A | B | D | E | G | H | O | R | S | U | V | W | X | Z | AA | AB | AC | AD | AW | AX | CP | YY | ZZ |
|-----------|-------|-----------|--------|--------------|--------------|--------------|--------------|------------|------------|---------------|-------------|--------------|--------------|---------------|---------------|--------------|--------------|--------------|----------|----------|---------------|----------|---------------|-----------------|----------|-----|
| DISCH | MODEL | | | | | | | | | | | | | | | | | | | | | | | | | |
| 3 | 492 | 10A | 4 | 12 (305) | 11-1/2 (292) | 10-1/2 (267) | 5-1/8 (130) | 2 (50) | 5/8 (16) | 17 (432) | 4-7/8 (124) | 5-1/2 (140) | 1-1/16 (27) | 3-7/8 (98) | 16-1/2 (419) | 10 (254) | 5-1/2 (140) | 3-3/8 (86) | 1/4 (6) | 1/8 (3) | 11-5/8 (295) | - | - | 29-3/16 (741) | 10 (254) | 1 |
| 4 | 492 | 10 | 6 | 13 (330) | 14 (355) | 13 (330) | 5-1/2 (139) | 1 (25) | 7/8 (22) | 20-5/16 (515) | 6 (152) | 6-1/2 (165) | 1-1/4 (31) | 4 (101) | 16-7/8 (428) | 10-1/4 (260) | 6-1/2 (165) | 2-1/4 (57) | 1/4 (6) | 1/8 (3) | 10-7/8 (276) | - | - | 29-13/16 (757) | 11 (279) | 3/4 |
| 4 | 492 | 14 | 5 | 14 (355) | 15 (381) | 12-1/2 (317) | 6 (152) | 2 (50) | 7/8 (22) | 21-3/4 (552) | 6-1/2 (165) | 7-3/8 (187) | 1-1/4 (31) | 3-5/8 (92) | 18-3/8 (466) | 13-1/2 (342) | 7-3/8 (187) | 2-5/8 (66) | 1/4 (6) | 1/8 (3) | 11-7/8 (301) | 3/8 (9) | 33-3/16 (842) | 14 (355) | 3/4 | |
| 4 | 492 | 18 | 5 | 15 (381) | 16 (406) | 14-3/4 (374) | 6-1/2 (165) | 2 (50) | 7/8 (22) | 25-3/4 (654) | 7 (177) | 9-1/2 (241) | 1-1/4 (31) | 3-1/2 (88) | 18-3/8 (466) | 14 (355) | 9-1/2 (241) | 2-5/8 (66) | 1/4 (6) | 1/8 (3) | 11-3/8 (288) | 1/4 (6) | 33-1/4 (844) | 14 (355) | 3/4 | |
| 5 | 492 | 10 | 8 | 16-1/2 (419) | 16-1/2 (419) | 16 (406) | 7 (177) | 1 (25) | 1-1/4 (31) | 23-5/8 (600) | 7 (177) | 8 (203) | 1-5/8 (41) | 4-5/8 (117) | 20 (508) | 12-1/2 (317) | 7 (177) | 4-3/16 (106) | 3/8 (9) | 3/16 (4) | 13 (406) | - | - | 35-1/2 (902) | 13 (330) | 3/4 |
| 5 | 492 | 18 | 6 | 18 (457) | 16 (406) | 16 (406) | 8 (203) | 2-1/4 (57) | 1 (25) | 27-3/4 (704) | 7 (177) | 10 (254) | 1-11/16 (42) | 4-15/16 (125) | 21 (533) | 14 (355) | 10 (254) | 4-1/8 (104) | 3/8 (9) | 3/16 (4) | 14 (355) | 1/4 (6) | 37-1/8 (942) | 14 (355) | 3/4 | |
| 6 | 492 | 10 | 10 | 16-1/2 (419) | 16-1/2 (419) | 18 (457) | 7 (177) | 3/4 (19) | 1-1/4 (31) | 26-7/16 (671) | 7 (177) | 9 (228) | 1-5/8 (41) | 4-5/8 (117) | 20-5/8 (523) | 13 (330) | 7-1/2 (190) | 4-3/16 (106) | 3/8 (9) | 3/16 (4) | 13-5/8 (346) | - | - | 36-3/4 (933) | 15 (381) | 3/4 |
| 6 | 492 | 15 | 8 | 17-1/2 (444) | 20 (508) | 15-1/2 (394) | 7-3/4 (197) | 2-1/2 (63) | 1 (25) | 25-3/4 (654) | 9 (228) | 8-3/4 (222) | 1-11/16 (42) | 4-3/16 (106) | 22-1/2 (571) | 15.5 (394) | 8-3/4 (222) | 4-1/8 (104) | 3/8 (9) | 3/16 (4) | 13-5/8 (346) | 3/4 (19) | 40-1/4 (1022) | 15 (381) | 1 | |
| 8 | 492 | 15 | 10 | 17-1/2 (444) | 20 (508) | 17-1/2 (444) | 7-3/4 (196) | 2-1/2 (63) | 1 (25) | 28-1/8 (714) | 9 (228) | 9-1/4 (234) | 1-11/16 (42) | 4-13/16 (122) | 22-1/2 (571) | 17 (431) | 9-1/4 (234) | 4-1/8 (104) | 3/8 (9) | 3/16 (4) | 13-1/2 (342) | 1/2 (12) | 40-1/4 (1022) | 17 (431) | 1 | |
| 10 | 492 | 18 | 12 | 26 (660) | 24 (609) | 21-3/4 (552) | 10-1/2 (266) | 1-1/4 (31) | 1-1/4 (31) | 35-1/4 (895) | 9-1/2 (241) | 11-1/2 (292) | 2 (50) | 5-5/16 (134) | 25-9/16 (649) | 21 (533) | 11-1/2 (292) | 5 (127) | 1/2 (12) | 1/4 (6) | 16-1/16 (407) | - | - | 45-13/16 (1163) | 21 (533) | 1 |

NOTES

1. All dimensions are in inches.
2. Dimensions may vary ± 3/8".
3. Not for construction purposes unless certified.
4. Suction & discharge flanges ANSI Standard flat face.

| | | |
|---|---|---|
| STD. 125# SUCTION AND DISCHARGE FLANGES | OPT. 125# SUCTION FLANGE, 250# DISCHARGE FLANGE | OPT. 250# SUCTION AND DISCHARGE FLANGES |
|---|---|---|

AURORA MODEL 495 PUMPS

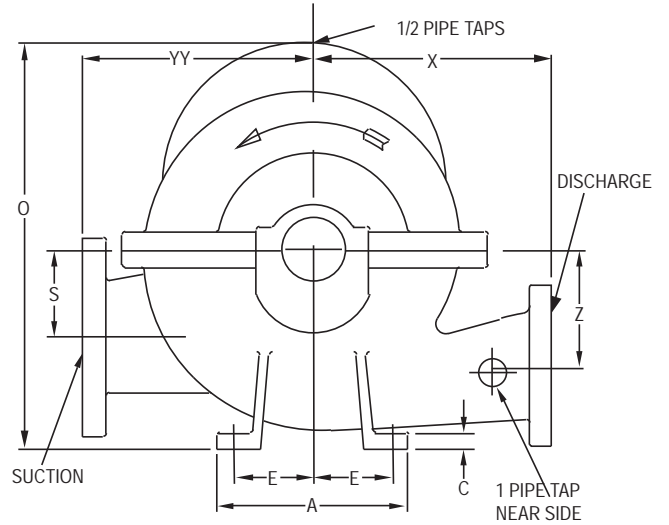
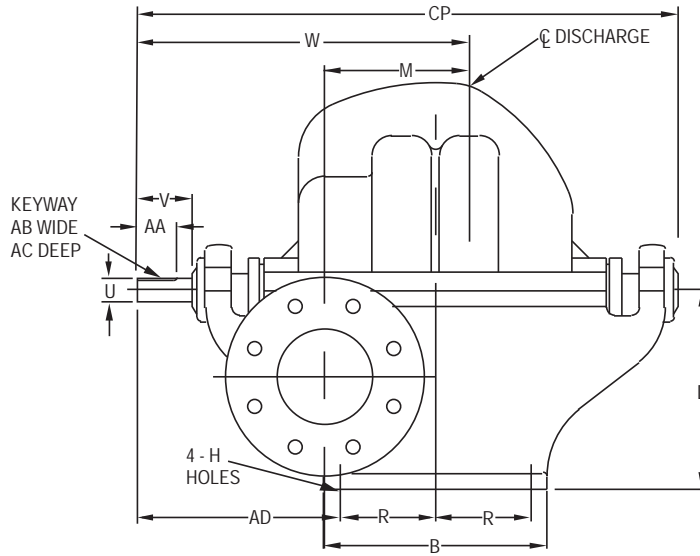
MULTI-STAGE FIRE SERVICE

Section **912** Page **213**

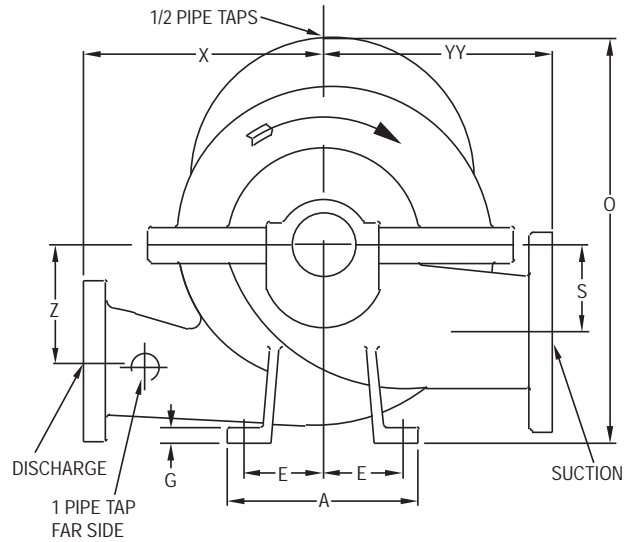
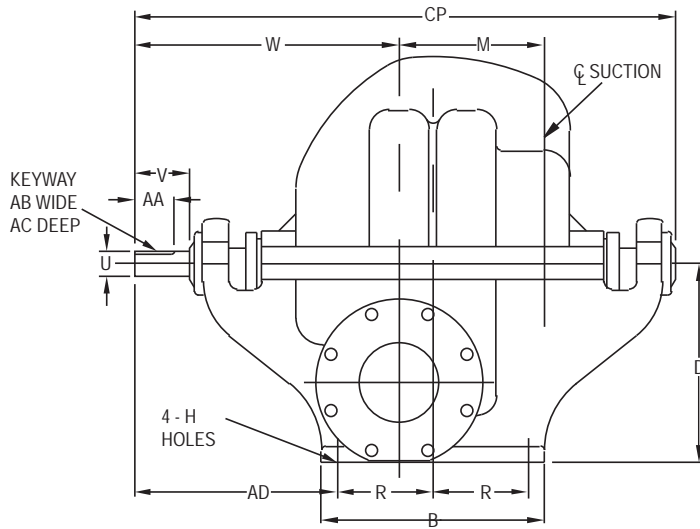
Date **May 2004**

Supersedes Section 912 Page 213

Dated December 1999



RIGHT HAND ROTATION



LEFT HAND ROTATION

| PUMP SIZE | | | SUCTION | | | | | | | | | | | | | | | | | | RIGHT HAND ROTATION | LEFT HAND ROTATION | | | | |
|-----------|-------|-----------|---------|-------------|-------------|-----------------|----------------|---------------|---------------|-------------|-----------------|-------------|------------|-----------------|-----------------|-----------------|-----------------|-----------------|-----------------|----------------|---------------------|--------------------|-----------------|------------------|-----------------|--|
| DISCH | MODEL | CASE BORE | | A | B | D | E | G | H | M | O | R | S | U | V | W | W | X | Z | AA | AB | AC | AD | CP | YY | |
| 5 | 495 | 15 | 6 | 20 (508) | 24 (609) | 17 (431) | 9 (228) | 2 (50) | 7/8 (22) | 11 (279) | 27-3/4 (704) | 11 (279) | 9 (228) | 1-11/16 (42) | 5-7/16 (138) | 28-3/8 (720) | 23-3/8 (593) | 15 (381) | 9 (228) | 4 (101) | 3/8 (9) | 3/16 (4) | 14-7/8 (377) | 46-7/8 (1190) | 15 (381) | |
| 6 | 495 | 17 | 8 | 22 (558) | 27 (685) | 17-1/2 (444) | 9-3/4 (247) | 2-1/2 (63) | 1-1/8 (28) | 13 (330) | 35-3/8 (898) | 12 (304) | 9 (228) | 2-1/4 (57) | 4-5/8 (117) | 31-5/8 (803) | 25-1/8 (638) | 16-1/2 (419) | 10-1/2 (266) | 4-1/4 (107) | 1/2 (12) | 1/4 (6) | 16-3/8 (415) | 52-1/2 (1333) | 16-1/2 (419) | |

NOTES

1. All dimensions are in inches.
2. Dimensions may vary $\pm 3/8"$.
3. Not for construction purposes unless certified.
4. Suction & discharge flanges ANSI Standard flat face.

| | |
|---|---|
| STD. 125# SUCTION FLANGE, 250# DISCHARGE FLANGE | OPT. 250# SUCTION AND DISCHARGE FLANGES |
|---|---|

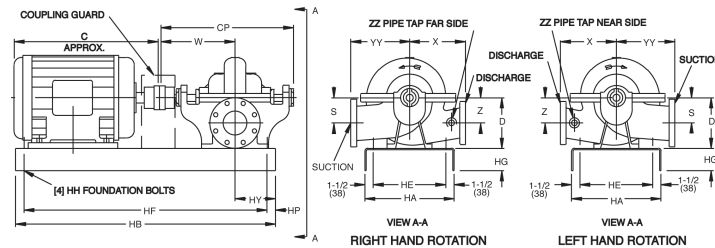
THIS PAGE LEFT INTENTIONALLY BLANK

AURORA MODEL 481 PUMPS

ON STANDARD STEEL BASE

Section **912** Page **231**
Date **September 9, 2011**

Supersedes Section 912 Page 231
Dated April 1, 2008



| STANDARD 125# SUCTION AND DISCHARGE FLANGES | | | OPTIONAL 125# SUCTION FLANGE, 250# DISCHARGE FLANGE | | | OPTIONAL 250# SUCTION AND DISCHARGE FLANGES | | | MOTOR FRAME | | C APPROX | | | | | | | | | | | | | | | | | | | | | | | | | | | | |
|---|-------|------------|---|--------------|--------------|---|--------------|--------------|--------------|--------------|--------------|-------|------|-------|-------|-------|-------|-------|-------|-------|-------|-------|-------|-------|-------|-------|-------|-------|-------|-------|-------|-------|-------|-------|--------|--------|--------|----|----|
| PUMP SIZE | | | SUCTION POWER SERIES | D | S | W | X | Z | CP | HY | | YY | ZZ | 18 | 21 | 23 | 22 | 24 | 24 | 25 | 25 | 26 | 26 | 28 | 29 | 29 | 28 | 30 | 30 | 33 | 32 | 35 | 34 | 38 | 36 | 40 | 40 | 44 | |
| DISCH | MODEL | CASE BORE | | | | | | | | | | | | (457) | (533) | (584) | (558) | (609) | (609) | (635) | (660) | (660) | (711) | (736) | (736) | (711) | (761) | (761) | (838) | (812) | (888) | (863) | (964) | (914) | (1015) | (1015) | (1117) | | |
| 2-1/2 | 481 | 10B | 3 | 8 (203) | 4 (102) | 13-1/2 (343) | 9-3/4 (247) | 4 (102) | 20 (609) | 5 (127) | 10 (254) | | BASE | 5 | 7 | 7 | 9 | 9 | 9 | 9 | 10 | 11 | 10 | 11 | 11 | 11 | 11 | 11 | 12 | - | - | - | - | - | - | - | - | - | - |
| 3 | 481 | 10 | 4 | 9* (228) | 4-1/2 (114) | 13-1/2 (343) | 10 (254) | 4-1/2 (114) | 24 (609) | 5 (127) | 11 (279) | | BASE | 5 | 7 | 7 | 9 | 9 | 9 | 9 | 10 | 11 | 10 | 11 | 11 | 11 | 11 | 11 | 12 | - | - | - | - | - | - | - | - | - | - |
| 4 | 481 | 11A 11C | 5 | 10+ (254) | 5 (127) | 14-1/2 (368) | 11-1/4 (286) | 5 (127) | 26 (660) | 6 (152) | 12-3/4 (324) | | BASE | 7 | 7 | 9 | 11 | 11 | 11 | 11 | 11 | 11 | 11 | 11 | 11 | 11 | 12 | 12 | 15 | 15 | 15 | 15 | 15 | 15 | 15 | 15 | - | - | - |
| 4 | 481 | 11D | 5 | 10+ (254) | 5 (127) | 14-1/2 (368) | 12 (305) | 5 (124) | 26 (660) | 6 (152) | 12-3/4 (324) | | BASE | 7 | 7 | 9 | 11 | 11 | 11 | 11 | 11 | 11 | 11 | 11 | 11 | 11 | 12 | 12 | 15 | 15 | 15 | 15 | 15 | - | - | - | - | - | - |
| 4 | 481 | 15 | 5 | 11 (279) | 5-1/2 (140) | 14-1/2 (368) | 13 (330) | 5-1/2 (140) | 26 (660) | 6 (152) | 14 (355) | | BASE | - | 7 | 9 | 11 | 11 | 11 | 11 | 11 | 11 | 11 | 11 | 11 | 12 | 12 | 15 | 15 | 15 | 15 | 15 | - | - | - | - | - | - | |
| 5 | 481 | 11B 11C | 6 | 11** (279) | 5-1/2 (140) | 16 (406) | 11-1/4 (286) | 5-1/2 (140) | 28-1/2 (723) | 6 (152) | 13-1/4 (336) | | BASE | 7 | 9 | 10 | 11 | 11 | 11 | 11 | 11 | 12 | 12 | 12 | 12 | 12 | 12 | 12 | 15 | 15 | 15 | 15 | 15 | 15 | 15 | 15 | 15 | 15 | 15 |
| 5 | 481 | 15 | 6 | 12-1/2 (217) | 6-1/4 (159) | 16 (406) | 13-1/4 (336) | 6-1/4 (159) | 26-1/2 (673) | 6 (152) | 15 (381) | 1-1/4 | BASE | 7 | 9 | 10 | 11 | 11 | 11 | 11 | 11 | 12 | 12 | 12 | 12 | 12 | 12 | 12 | 15 | 15 | 15 | 15 | 15 | 15 | 15 | 15 | 15 | 15 | 15 |
| 5 | 481 | 17 | 6 | 12-1/2 (217) | 6-1/4 (159) | 16 (406) | 14 (355) | 6-1/4 (159) | 28-1/2 (723) | 6 (152) | 15 (381) | | BASE | 7 | 9 | 10 | 11 | 11 | 11 | 11 | 11 | 12 | 12 | 12 | 12 | 12 | 12 | 12 | 15 | 15 | 15 | 15 | 15 | 15 | 15 | 15 | 15 | 15 | |
| 6 | 481 | 11 | 8 | 12-1/2 (217) | 6-1/4 (159) | 16 (406) | 11-3/4 (298) | 6-1/4 (159) | 28-1/2 (723) | 6 (152) | 14-1/2 (368) | | BASE | 7 | 9 | 10 | 11 | 11 | 11 | 11 | 11 | 12 | 12 | 12 | 12 | 12 | 12 | 15 | 15 | 15 | 15 | 15 | 15 | 15 | 15 | 15 | 15 | 15 | |
| 6 | 481 | 11HH | 8 | 16-1/2 (419) | 8-5/8 (219) | 18-1/2 (460) | 10 (254) | 8-5/8 (219) | 32-7/8 (835) | 8 (203) | 15 (381) | | BASE | | | | | | | | | | | | | | | | | | | | | | | | | | 13 |
| 6 | 481 | 14HH | 8 | 16-1/2 (419) | 7-1/2 (191) | 20-1/2 (519) | 15 (381) | 7-1/2 (191) | 36-3/4 (933) | 8 (203) | 17 (431) | | BASE | | | | | | | | | | | | | | | | | | | | | | | | | | 15 |
| 6 | 481 | 15B 15C | 8 | 13-1/2 (343) | 6-3/4 (171) | 18 (457) | 14-1/4 (368) | 6-3/4 (171) | 32 (812) | 7 (178) | 16-3/4 (425) | | BASE | | - | 11 | 12 | 12 | 12 | 12 | 12 | 12 | 12 | 12 | 12 | 12 | 12 | 13 | 13 | 15 | 15 | 15 | 15 | 15 | 15 | 16 | 16 | 16 | |
| 6 | 481 | 18B 18C | 8 | 14-3/4 (374) | 8 (203) | 18 (457) | 16 (406) | 8 (203) | 32 (812) | 7 (178) | 18 (457) | | BASE | | 10 | 11 | 12 | 12 | 12 | 12 | 12 | 12 | 12 | 12 | 12 | 12 | 12 | 13 | 13 | 15 | 15 | 15 | 15 | 15 | 16 | 16 | 16 | | |
| 6 | 481 | 20 | 8 | 14-3/4 (374) | 8 (203) | 18 (457) | 15-3/4 (400) | 8 (203) | 32 (812) | 7 (178) | 18 (457) | | BASE | | 10 | 11 | 12 | 12 | 12 | 12 | 12 | 12 | 12 | 12 | 12 | 12 | 12 | 13 | 13 | 15 | 15 | 15 | 15 | 16 | 16 | 16 | 16 | | |
| 8 | 481 | 12 | 10 | 14-3/4 (374) | 8 (203) | 18 (457) | 17 (431) | 9 (228) | 32 (812) | 7 (178) | 17-3/4 (450) | | BASE | | 10 | 11 | 12 | 12 | 12 | 12 | 12 | 12 | 12 | 12 | 12 | 12 | 12 | 13 | 13 | 15 | 15 | 15 | 15 | 16 | 16 | 16 | 16 | | |
| 8 | 481 | 17B | 10 | 14-3/4 (374) | 8 (203) | 18 (457) | 17 (431) | 8 (203) | 32 (812) | 7 (178) | 17-3/4 (450) | | BASE | | 10 | 11 | 12 | 12 | 12 | 12 | 12 | 12 | 12 | 12 | 12 | 12 | 12 | 13 | 13 | 15 | 15 | 15 | 15 | 16 | 16 | 16 | 16 | | |
| 8 | 481 | 21 21A | 10 | 18-1/2 (470) | 9-1/2 (241) | 21-7/8 (555) | 18 (457) | 9-1/2 (241) | 38 (964) | 11 (279) | 21 (533) | | BASE | | | | | | | | | | | | | | | | | | | | | | | | | 14 | |
| 10 | 481 | 15C | 12 | 25 (635) | 13-1/2 (343) | 21-7/8 (555) | 17 (431) | 13-1/2 (343) | 38 (964) | 11 (279) | 20 (508) | 1-1/4 | BASE | | | | | | | | | | | | | | | | | | | | | | | | | 14 | |
| 10 | 481 | 18 | 12 | 25 (635) | 13-1/2 (343) | 21-7/8 (555) | 18 (457) | 13-1/2 (343) | 38 (964) | 11 (279) | 22 (558) | | BASE | | | | | | | | | | | | | | | | | | | | | | | | | | 14 |
| 10 | 481 | 18D | 12 | 25 (635) | 12-1/4 (311) | 24-1/4 (616) | 20 (508) | 12-1/4 (311) | 43 (1092) | 11-1/2 (292) | 24 (610) | 2 | BASE | | | | | | | | | | | | | | | | | | | | | | | | | | |
| 12 | 481 | 18A | 14 | 24 (609) | 15 (381) | 25-1/4 (615) | 18 (457) | 15 (381) | 44 (1117) | 11 (279) | 23 (584) | | BASE | | | | | | | | | | | | | | | | | | | | | | | | | | |

NOTES

- All dimensions are in inches.
- Dimensions may vary ± 3/8".
- Not for construction purposes unless certified.
- Coupling gap may vary 1/8" thru 2-1/16".
- Conduit box is shown in approximate location. Dimensions are not specified as they vary with each motor manufacturer.
- Suction and discharge flanges are ANSI standard flat face.

* D is 10-1/2" when using frames 324TS - 365TS.
 ** D is 12 when using frames 404TS - 445TS.
 *** Pump sizes 6-481-11HH & 6-481-14HH are furnished as standard with 125# suction flange & 250# discharge flange.
 +D is 10-1/2" when using frames 404TS - 405T and D is 11 when using frames 444TS - 445TS.

| BASE | HA | HB | HE | HG | HH | HF | HP |
|------|----------|-----------|----------|------------|----------|-----------|----------|
| 5 | 12 (305) | 38 (964) | 9 (228) | 3 (76) | 1/2 (13) | 17 (431) | 20 (508) |
| 7 | 13 (330) | 42 (1066) | 10 (254) | 4 (101) | 5/8 (15) | 17 (431) | 24 (609) |
| 9 | 15 (381) | 44 (1117) | 12 (305) | 3-3/8 (86) | 5/8 (15) | 19 (482) | 24 (609) |
| 10 | 18 (457) | 44 (1117) | 15 (381) | 4 (101) | 5/8 (15) | 42 (1066) | 1 (25) |
| 11 | 18 (457) | 48 (1219) | 15 (381) | 4 (101) | 5/8 (15) | 46 (1168) | 1 (25) |
| 12 | 18 (457) | 54 (1371) | 15 (381) | 4 (101) | 5/8 (15) | 52 (1320) | 1 (25) |
| 13 | 18 (457) | 60 (1524) | 15 (381) | 4 (101) | 5/8 (15) | 35 (888) | 24 (609) |
| 14 | 18 (457) | 65 (1651) | 15 (381) | 4 (101) | 5/8 (15) | 40 (1015) | 24 (609) |
| 15 | 22 (558) | 60 (1524) | 19 (482) | 4 (101) | 5/8 (15) | 58 (1473) | 1 (25) |
| 16 | 22 (558) | 72 (1828) | 19 (482) | 4 (101) | 5/8 (15) | 70 (1778) | 1 (25) |
| 17 | 22 (558) | 84 (2133) | 19 (482) | 4 (101) | 5/8 (15) | 82 (2082) | 1 (25) |



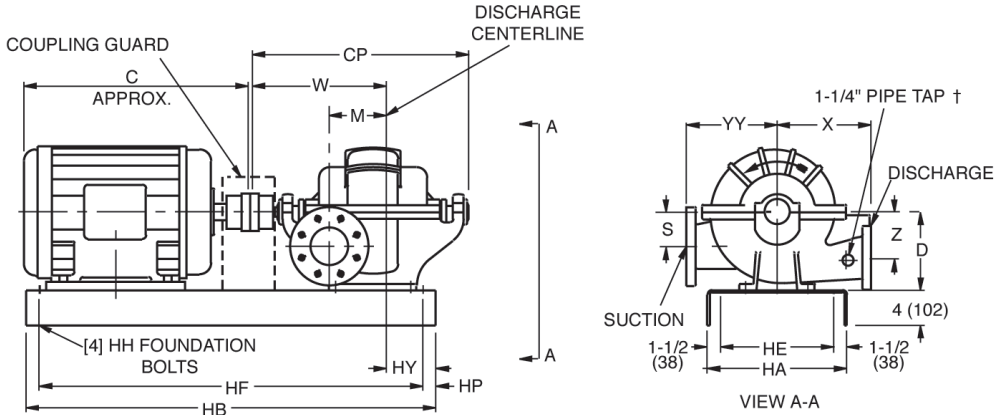
AURORA MODEL 485 PUMPS

Date **July 2009**

ON STANDARD STEEL BASE

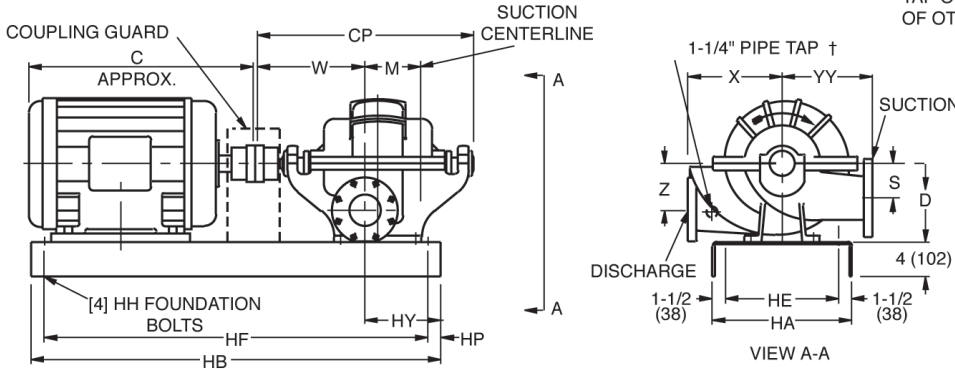
Supersedes Section 912 Page 252

Dated June 2008



RIGHT HAND ROTATION

† PIPE TAP ON BOTH SIDES OF 5-485-12 AND 6-485-12. PIPE TAP ON NEAR SIDE OF OTHER PUMPS.



LEFT HAND ROTATION

| | | STANDARD* 125# SUCTION AND 250# DISCHARGE FLANGE | | | | | OPTIONAL* 250# SUCTION AND DISCHARGE FLANGES | | | | | MOTOR FRAME | | | | | | | | | | | | | | | | | | | | |
|-------|-------|--|---------|--------------|-----------------|----------------|--|---------------------|--------------------|-------------|----------------|-----------------|---------------------|--------------------|------------------|------|-------|-------|-------|-------|-------|-------|-------|-------|-------|-------|-------|-------|-------|--------|--|--|
| DISCH | MODEL | CASE BORE | SUCTION | POWER SERIES | D | M | S | RIGHT HAND ROTATION | LEFT HAND ROTATION | X | Z | CP | RIGHT HAND ROTATION | LEFT HAND ROTATION | YY | C | 326TS | 326T | 346TS | 346T | 365TS | 365T | 404TS | 404T | 405TS | 405T | 444TS | 444T | 447TS | 447T | | |
| | | | | | | | | W | W | | | | HY | HY | | | (660) | (711) | (685) | (736) | (711) | (761) | (838) | (812) | (863) | (914) | (863) | (914) | (991) | (1143) | | |
| 4 | 485 | 15 | 5 | 3 | 11 (279) | 7-1/8 (181) | 5 (127) | 18-7/8 (479) | 15-1/8 (384) | 13 (330) | 6-1/2 (165) | 31 (787) | 4-1/8 (105) | 7-7/8 (200) | 13-1/2 (343) | BASE | 12 | 26 | 27 | 28 | 30 | 33 | 32 | 15 | 15 | 15 | 15 | 15 | | | | |
| 5 | 485 | 12 | 5 | 4A | 14 (356) | 6-5/8 (168) | 7 (178) | 20-7/8 (530) | 18-1/8 (460) | 13 (330) | 7 (178) | 35-3/8 (889) | 11-1/8 (283) | 13-7/8 (352) | 13 (330) | BASE | | | | | | | 16 | 16 | 16 | 16 | 16 | 17 | 17 | | | |
| 5 | 485 | 15 | 6 | 4 | 12-1/2 (317) | 9-1/8 (232) | 5-1/2 (140) | 21-1/8 (536) | 16-7/8 (428) | 15 (381) | 7-1/2 (190) | 34-1/2 (876) | 4-7/8 (124) | 9-1/8 (232) | 15-7/16 (392) | BASE | 12 | 12 | 12 | 12 | 12 | 13 | 15 | 15 | 15 | 15 | 15 | 16 | | | | |
| 6 | 485 | 12 | 6 | 5A | 15 (381) | 7-1/2 (191) | 8 (203) | 22-7/8 (581) | 19-5/8 (498) | 14 (356) | 8 (203) | 38-1/2 (978) | 10-7/8 (276) | 14-1/8 (359) | 14 (356) | BASE | | | | | | | | 16 | 16 | 16 | 16 | 17 | 17 | | | |
| 6 | 485 | 16/ 16B | 8 | 5 | 16.5 (419) | 10.5 (267) | 8.25 (210) | 23.63 (600) | 18.38 (467) | 19 (483) | 7.75 (197) | 37.88 (962) | 5 (127) | 10.25 (260) | 17 (432) | BASE | | | | | 13 | 13 | 16 | 16 | 16 | 16 | 16 | 16 | 16 | 17 | | |
| 6 | 485 | 17A | 8 | 5 | 14-3/4 (374) | 11 (279) | 7 (178) | 24-1/2 (622) | 17-1/2 (444) | 16 (406) | 9 (228) | 38 (964) | 3-1/2 (89) | 10-1/2 (266) | 16-1/2 (419) | BASE | 13 | 13 | 13 | 13 | 13 | 13 | 15 | 15 | 15 | 16 | 16 | 16 | 16 | | | |

| BASE | SIZE | HA | HB | HE | HF | HH | HP |
|------|----------------|-------------|--------------|-------------|--------------|-------------|-------------|
| 12 | 18x54 (558) | 18 (457) | 54 (1372) | 15 (381) | 52 (1321) | 5/8 (16) | 1 (25) |
| 13 | 18x60 (660) | 18 (457) | 60 (1524) | 15 (381) | 35 (889) | 5/8 (16) | 24 (609) |
| 15 | 22x60 (660) | 22 (559) | 60 (1524) | 19 (483) | 58 (1473) | 3/4 (19) | 1 (25) |
| 16 | 22x72 (660) | 22 (559) | 72 (1829) | 19 (483) | 70 (1777) | 5/8 (16) | 1 (25) |
| 17 | 22x84 (660) | 22 (559) | 84 (2134) | 19 (483) | 80 (2083) | 5/8 (16) | 1 (25) |

NOTES

- 1. All dimensions are in inches (mm).
- 2. Dimensions may vary $\pm 3/8"$ (10).
- 3. Not for construction purposes unless certified.
- 4. Coupling gap may vary 1/8" thru 1".
- 5. Conduit box is shown in approximate location. Dimensions are not specified as they vary with each motor manufacturer.
- 6. Suction and discharge flanges are ANSI standard flat face.

* 150# AND 300# OR 300# AND 300# SUCTION AND DISCHARGE DUCTILE IRON FOR 5-485-12 AND 6-485-12

AURORA MODEL 491 PUMPS

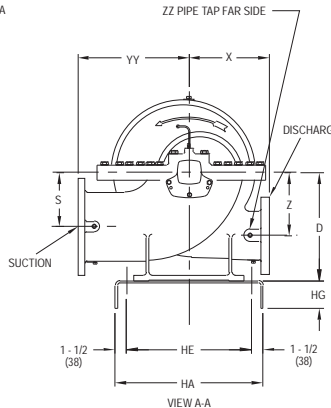
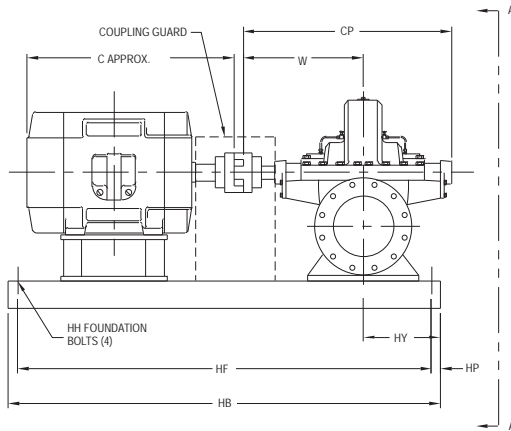
ON STANDARD STEEL BASE

Section **912** Page **241**

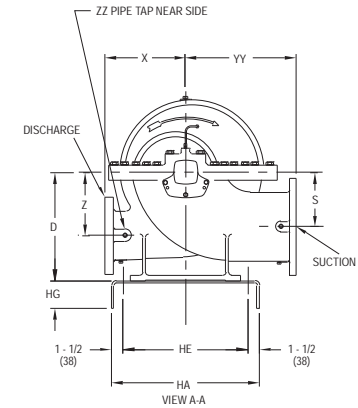
Date **February 2005**

Supersedes Section 912 Page 261

Dated April 2003



RIGHT HAND ROTATION



LEFT HAND ROTATION

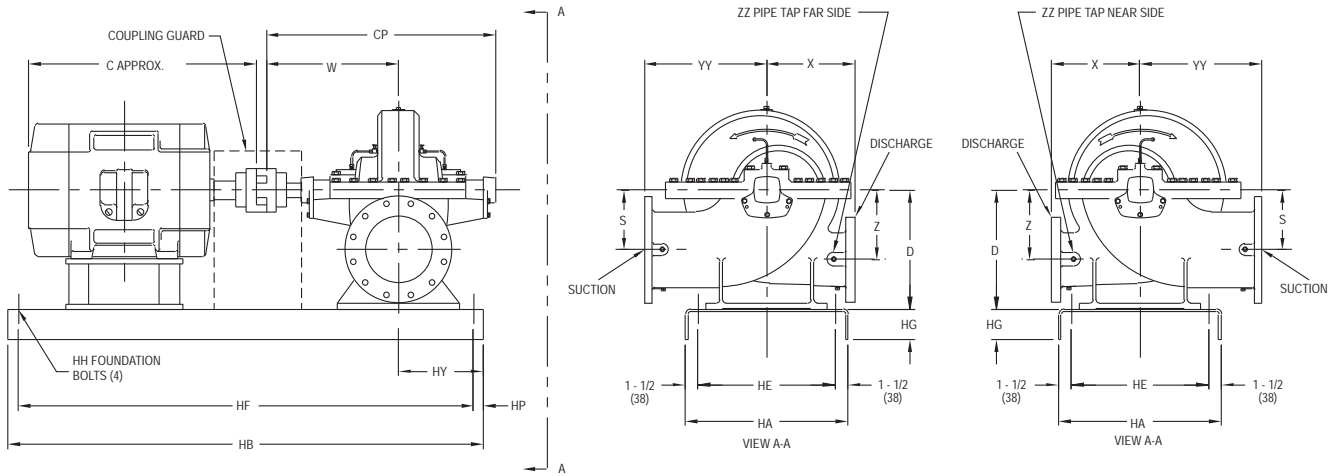
| PUMP SIZE | | STANDARD* 125# SUCTION AND DISCHARGE FLANGES | | OPTIONAL 125# SUCTION FLANGE, 250# DISCHARGE FLANGE | | | | OPTIONAL 250# SUCTION AND DISCHARGE FLANGES | | | | MOTOR FRAME | C ; | | | | | | | | | | | | | | | | | | | | | | | | | | | | |
|-----------|-------|--|---------|---|--------|---------|--------|---|----------|--------|--------|----------------|--------|-------|-------|-------|-------|-------|-------|-------|-------|-------|-------|-------|-------|-------|-------|-------|-------|-------|-------|-------|-------|--------|--------|--------|--------|--------|----|----|----|
| DISCH | MODEL | CASE BORE | SUCTION | D | S | W | X | Z | CP | HY | YY | ZZ | APPROX | 21 | 23 | 22 | 24 | 25 | 25 | 26 | 26 | 28 | 28 | 29 | 29 | 28 | 30 | 30 | 33 | 32 | 40 | 40 | 40 | 40 | 40 | 44 | 44 | 44 | 44 | 49 | |
| | | | | (304) | (155) | (371) | (279) | (155) | (658) | (254) | (203) | (304) | | (533) | (584) | (533) | (609) | (609) | (635) | (660) | (660) | (711) | (736) | (736) | (711) | (711) | (762) | (838) | (812) | (889) | (863) | (965) | (914) | (1016) | (1016) | (1117) | (1143) | (7244) | | | |
| 3 | 491 | 9C | 5 | 12 | 6-1/8 | 14-5/8 | 11 | 6-1/8 | 25-15/16 | 10 | 12 | 3/4 | BASE | 11 | 11 | 11 | 12 | 12 | 12 | 12 | 12 | 12 | 12 | 12 | 12 | 12 | - | - | - | - | - | - | - | - | - | - | - | - | - | | |
| 4 | 491 | 8A | 6 | 11 | 5-3/4 | 14-5/8 | 10 | 5-1/2 | 25-15/16 | 8 | 11-1/4 | 3/4 | BASE | 11 | 11 | 11 | 11 | 11 | 12 | 12 | 12 | 12 | 12 | 12 | 12 | 12 | - | - | - | - | - | - | - | - | - | - | - | - | - | - | - |
| 4 | 491 | 11A&C | 6 | 13-3/4 | 6-7/8 | 16-5/8 | 11-1/4 | 7-1/8 | 29-11/16 | 10 | 14 | 3/4 | BASE | 12 | 12 | 12 | 12 | 12 | 12 | 12 | 12 | 13A | 13A | 13A | 13A | 13A | 15 | 15 | 15 | 16 | 16 | 16 | 16 | 16 | 16 | 16 | 16 | - | - | - | - |
| 4 | 491 | 14C | 6 | 13-3/4 | 6-7/8 | 17-5/8 | 13 | 8-3/8 | 31-11/16 | 12 | 15-1/4 | 3/4 | BASE | - | - | - | - | - | 15 | 15 | 15 | 15 | 15 | 15 | 15 | 15 | 15 | - | - | - | - | - | - | - | - | - | - | - | - | - | |
| 5 | 491 | 14A | 8 | 16-1/4 | 8-1/4 | 17-5/8 | 13-1/2 | 9-3/4 | 31-11/16 | 12 | 17-1/4 | 1 | BASE | - | - | - | - | 15 | 15 | 15 | 15 | 15 | 15 | 15 | 15 | 15 | 15 | 16 | 16 | 16 | 16 | 16 | 16 | 16 | 16 | 16 | 16 | - | - | - | - |
| 5 | 491 | 18A | 8 | 16-1/4 | 8-1/8 | 18-7/8 | 15 | 10-5/8 | 33-3/8 | 12 | 18-3/4 | 1 | BASE | - | - | - | - | - | - | - | - | 15 | 15 | 15 | 15 | 15 | 15 | 16 | 16 | 16 | 16 | 16 | 16 | 16 | 16 | 16 | 16 | - | - | - | - |
| 6 | 491 | 12A | 6 | 13-3/4 | 6-7/8 | 16-5/8 | 20-1/2 | 7-1/8 | 29-11/16 | 10 | 14 | 1 | BASE | 12 | 12 | 12 | 12 | 12 | 12 | 12 | 12 | 12 | 12 | 12 | 12 | 12 | 13A | 13A | 13A | 15 | 15 | 15 | 16 | 16 | 16 | 16 | 16 | - | - | - | - |
| 6 | 491 | 14C | 10 | 18-3/4 | 9-3/8 | 20-1/8 | 13-1/4 | 10 | 35-7/8 | 12 | 18 | 1 | BASE | - | 15 | 15 | 15 | 15 | 15 | 15 | 15 | 15 | 15 | 15 | 15 | 16 | 16 | 16 | 16 | 16 | 16 | 16 | 16 | 16 | 16 | 16 | 16 | - | - | - | - |
| 6 | 491 | 18C | 10 | 18-3/4 | 9-3/8 | 20-1/8 | 16 | 11-3/4 | 35-7/8 | 13-1/2 | 20 | 1 | BASE | - | - | - | - | 21 | 21 | 21 | 21 | 21 | 21 | 21 | 21 | 21 | 21 | 21 | 21 | 21 | 21 | 21 | 21 | 21 | 21 | 21 | 21 | 21 | 21 | 21 | 21 |
| 6 | 491 | 19A | 10 | 18-3/4 | 9-3/8 | 22-5/8 | 18 | 12-1/8 | 39-1/4 | 13-1/2 | 22 | 1 | BASE | - | - | - | - | - | - | - | - | - | - | - | - | - | - | - | - | - | - | - | 22 | 22 | 22 | 22 | 22 | 22 | 22 | 22 | |
| 8 | 491 | 14A | 12 | 21-1/2 | 10-3/4 | 20-1/2 | 16 | 10-3/4 | 36-5/8 | 13-1/2 | 22 | 1 | BASE | - | - | - | - | - | - | - | - | - | - | - | - | - | - | 22 | 22 | 22 | 22 | 22 | 22 | 22 | 22 | 22 | 22 | - | - | - | |
| 8 | 491 | 18A | 12 | 21-1/2 | 10-3/4 | 23-3/4 | 16 | 12-1/2 | 41-1/2 | 13-1/2 | 22 | 1 | BASE | - | - | - | - | - | - | - | - | - | - | - | - | - | - | 22 | 22 | 22 | 22 | 22 | 22 | 22 | 22 | 22 | 22 | 23 | 23 | 23 | 23 |
| 10 | 491 | 20 | 16 | 24 | 13 | 25-9/16 | 23 | 14-1/4 | 44-9/16 | 15 | 25 | 1 | BASE | - | - | - | - | - | - | - | - | - | - | - | - | - | - | - | - | - | - | - | - | - | 23 | 23 | 24 | 24 | 24 | | |

NOTES

- All dimensions are in inches.
- Dimensions may vary ± 3/8".
- Not for construction purposes unless certified.
- Coupling gap may vary 1/8" thru 3".
- Conduit box is shown in approximate location. Dimensions are not specified as they vary with each motor manufacturer.
- Suction and discharge flanges are ANSI standard flat face.
- Structural steel bases are used for pumps with motor frames larger than 449T (refer to factory)

*STD 125# SUCTION FLANGE AND
250# DISCHARGE FLANGE
FOR 6-491-12A
AND 10-491-20

| BASE | HA | HB | HE | HG | HH | HF | HP |
|------|-------------|--------------|-------------|----------------|-------------|--------------|-----------|
| 11 | 18 (457) | 48 (1219) | 15 (381) | 4 (101) | 5/8 (15) | 46 (1168) | 1 (25) |
| 12 | 18 (457) | 54 (1371) | 15 (381) | 4 (101) | 5/8 (15) | 52 (1320) | 1 (25) |
| 13A | 18 (457) | 60 (1524) | 15 (381) | 4 (101) | 5/8 (15) | 58 (1473) | 1 (25) |
| 14A | 18 (457) | 65 (1651) | 15 (381) | 4 (101) | 5/8 (15) | 63 (1600) | 1 (25) |
| 15 | 22 (558) | 60 (1524) | 19 (482) | 4 (101) | 5/8 (15) | 58 (1473) | 1 (25) |
| 16 | 22 (558) | 72 (1828) | 19 (482) | 4 (101) | 5/8 (15) | 70 (1778) | 1 (25) |
| 21 | 24 (609) | 66 (1676) | 21 (533) | 4 (101) | 5/8 (15) | 64 (1625) | 1 (25) |
| 22 | 24 (609) | 78 (1981) | 21 (533) | 4 (101) | 5/8 (15) | 76 (1930) | 1 (25) |
| 23 | 26 (660) | 84 (2133) | 23 (584) | 4-1/2 (114) | 5/8 (15) | 82 (2082) | 1 (25) |
| 24 | 26 (660) | 96 (2438) | 23 (584) | 4-1/2 (114) | 5/8 (15) | 94 (2387) | 1 (25) |



RIGHT HAND ROTATION

LEFT HAND ROTATION

| PUMP SIZE | | STANDARD 125# SUCTION AND DISCHARGE FLANGES | | OPTIONAL 125# SUCTION FLANGE, 250# DISCHARGE FLANGE | | OPTIONAL 250# SUCTION AND DISCHARGE FLANGES | | MOTOR FRAME | | C | | | |
|-----------|-------|---|---------|---|-----------------|---|-----------------|-----------------|--------------------|-------------|-----------------|-----|--------|
| DISCH | MODEL | CASE BORE | SUCTION | D | S | W | X | Z | CP | HY | YY | ZZ | APPROX |
| 3 | 492 | 10A | 4 | 10-1/2 (267) | 5-1/2 (140) | 16-1/2 (419) | 10 (254) | 5-1/2 (140) | 29-3/16 (757) | 7 (178) | 10 (254) | 1 | BASE |
| 4 | 492 | 10 | 6 | 13 (330) | 6-1/2 (165) | 16-7/8 (428) | 10-1/4 (260) | 6-1/2 (165) | 29-13/16 (757) | 10 (254) | 11 (279) | 3/4 | BASE |
| 4 | 492 | 14 | 5 | 12-1/2 (317) | 7-3/8 (187) | 18-3/8 (466) | 13-1/2 (342) | 7-3/8 (187) | 33-3/16 (842) | 10 (254) | 14 (355) | 3/4 | BASE |
| 4 | 492 | 18 | 5 | 14-3/4 (374) | 9-1/2 (241) | 18-3/8 (466) | 14 (355) | 9-1/2 (241) | 33-1/4 (844) | 11 (279) | 14 (355) | 3/4 | BASE |
| 5 | 492 | 10 | 8 | 16 (406) | 8 (203) | 20 (508) | 12-1/2 (317) | 7 (178) | 35-1/2 (902) | 11 (279) | 13 (330) | 1 | BASE |
| 5 | 492 | 18 | 6 | 16 (406) | 10 (254) | 21 (533) | 14 (355) | 10 (254) | 37-1/8 (942) | 11 (279) | 14 (355) | 1 | BASE |
| 6 | 492 | 10 | 10 | 18 (457) | 9 (228) | 20-5/8 (523) | 13 (330) | 7-1/2 (190) | 36-3/4 (933) | 11 (279) | 15 (381) | 1 | BASE |
| 6 | 492 | 15 | 8 | 15-1/2 (394) | 8-3/4 (222) | 22-1/2 (571) | 15 (381) | 8-3/4 (222) | 40-1/4 (1022) | 13 (330) | 15-1/2 (394) | 1 | BASE |
| 8 | 492 | 15 | 10 | 17-1/2 (444) | 9-1/4 (234) | 22-1/2 (571) | 17 (431) | 9-1/4 (234) | 40-1/4 (1022) | 13 (330) | 17 (431) | 1 | BASE |
| 10 | 492 | 18 | 12 | 21-3/4 (552) | 11-1/2 (292) | 25-9/16 (649) | 21 (533) | 11-1/2 (292) | 45-13/16 (1163) | 15 (381) | 21 (533) | 1 | BASE |

| BASE | HA | HB | HE | HG | HH | HF | HP |
|------|-------------|--------------|-------------|----------------|-------------|--------------|-----------|
| 11 | 18 (457) | 48 (1219) | 15 (381) | 4 (101) | 5/8 (15) | 46 (1168) | 1 (25) |
| 12 | 18 (457) | 54 (1371) | 15 (381) | 4 (101) | 5/8 (15) | 52 (1320) | 1 (25) |
| 13A | 18 (457) | 60 (1524) | 15 (381) | 4 (101) | 5/8 (15) | 58 (1473) | 1 (25) |
| 14A | 18 (457) | 65 (1651) | 15 (381) | 4 (101) | 5/8 (15) | 63 (1600) | 1 (25) |
| 15 | 22 (558) | 60 (1524) | 19 (482) | 4 (101) | 5/8 (15) | 58 (1473) | 1 (25) |
| 16 | 22 (558) | 72 (1828) | 19 (482) | 4 (101) | 5/8 (15) | 70 (1778) | 1 (25) |
| 17 | 22 (558) | 84 (2133) | 19 (482) | 4 (101) | 5/8 (15) | 82 (2082) | 1 (25) |
| 23 | 26 (660) | 84 (2133) | 23 (584) | 4-1/2 (114) | 5/8 (15) | 82 (2082) | 1 (25) |
| 24 | 26 (660) | 96 (2438) | 23 (584) | 4-1/2 (114) | 5/8 (15) | 94 (2387) | 1 (25) |

NOTES

1. All dimensions are in inches.
2. Dimensions may vary ± 3/8".
3. Not for construction purposes unless certified.
4. Coupling gap may vary 1/8" thru 3".
5. Conduit box is shown in approximate location. Dimensions are not specified as they vary with each motor manufacturer.
6. Suction and discharge flanges are ANSI standard flat face.
7. Structural steel bases are used for pumps with motor frames larger than 449T (refer to factory)

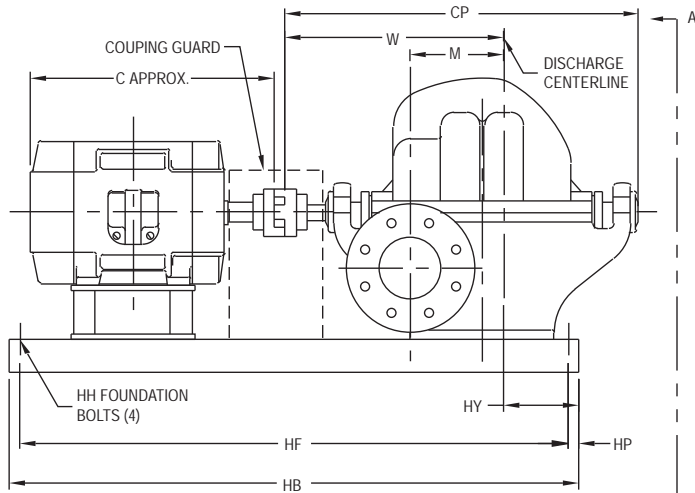
AURORA MODEL 495 PUMPS ON STANDARD STEEL BASE

Section **912** Page **243**

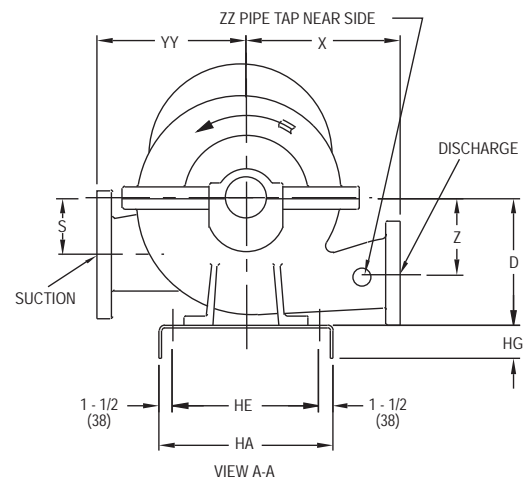
Date **October 2005**

Supersedes Section 912 Page 263

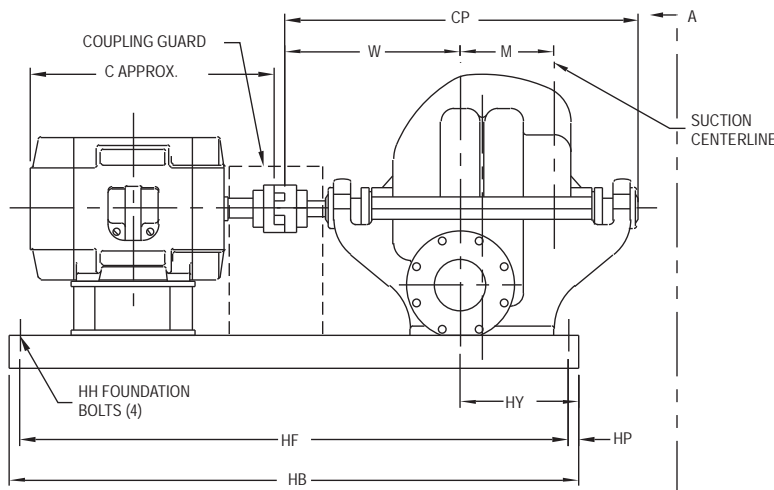
Dated February 2005



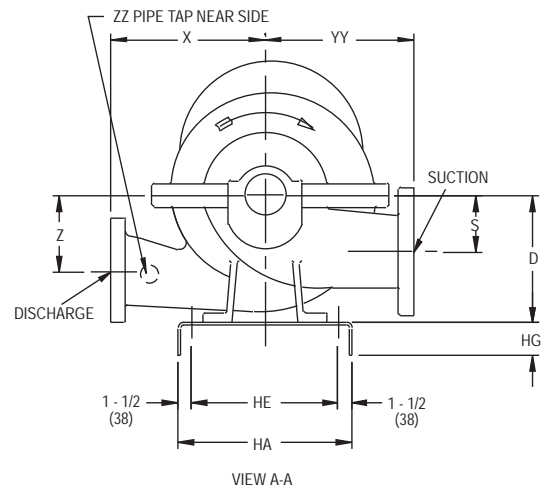
RIGHT HAND ROTATION



VIEW A-A



LEFT HAND ROTATION



VIEW A-A

| PUMP SIZE | | STANDARD 125# SUCTION FLANGE, 250# DISCHARGE FLANGE | | OPTIONAL 250# SUCTION AND DISCHARGE FLANGE | | MOTOR FRAME | | C APPROX | ZZ | RIGHT HAND HY | LEFT HAND HY | YY | ZZ | C APPROX | 404TS | 404T | 405TS | 405T | 444TS | 444T | 445TS | 445T | 447TS | 447T | 449TS | 449T | |
|-----------|-------|---|---------|--|-------------|-------------|--------------------|-----------------|-----------------|---------------------|--------------------|-----------------|-----------------|-----------------|-------------------|------|-------|------|---------------------|--------------------|-------|------|-------|------|-------|------|----|
| DISCH | MODEL | CASE BORE | SUCTION | D | M | S | RIGHT HAND W | | | | | | | | LEFT HAND W | X | Z | CP | RIGHT HAND HY | LEFT HAND HY | YY | 30 | 33 | 32 | 35 | 34 | 38 |
| 5 | 495 | 15 | 6 | 17 (431) | 11 (279) | 9 (228) | 28-3/8 (720) | 23-3/8 (593) | 15 (381) | 9 (228) | 46-7/8 (1190) | 13-1/2 (342) | 18-1/2 (469) | 15 (381) | 1 | 17 | 17 | 17 | - | - | - | - | - | - | - | - | - |
| 6 | 495 | 17 | 8 | 17-1/2 (444) | 13 (330) | 9 (228) | 31-5/8 (803) | 25-1/8 (638) | 16-1/2 (419) | 10-1/2 (266) | 52-1/2 (1333) | 12-3/4 (323) | 19-1/4 (488) | 16-1/2 (419) | 1 | - | - | - | 23 | 23 | 23 | 23 | 24 | 24 | 24 | 24 | |

NOTES

- All dimensions are in inches.
- Dimensions may vary $\pm 3/8"$.
- Not for construction purposes unless certified.
- Coupling gap may vary 1/8" thru 3".
- Conduit box is shown in approximate location. Dimensions are not specified as they vary with each motor manufacturer.
- Suction and discharge flanges are ANSI standard flat face.

| BASE | HA | HB | HE | HG | HH | HF | HP |
|------|-------------|--------------|-------------|----------------|-------------|--------------|-----------|
| 17 | 22 (558) | 84 (2133) | 19 (482) | 4 (101) | 5/8 (15) | 82 (2082) | 1 (25) |
| 23 | 26 (660) | 84 (2133) | 23 (584) | 4-1/2 (114) | 5/8 (15) | 82 (2082) | 1 (25) |
| 24 | 26 (660) | 96 (2438) | 23 (584) | 4-1/2 (114) | 5/8 (15) | 94 (2387) | 1 (25) |

Section **912** Page **244**

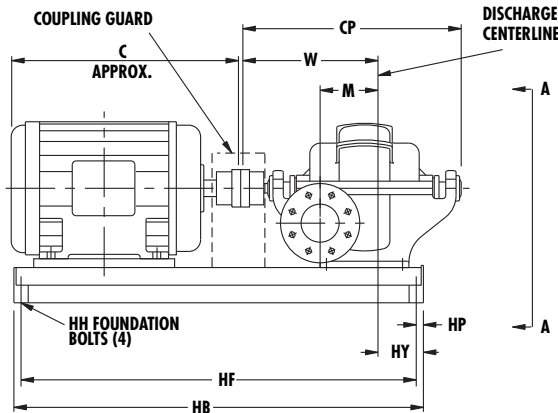
Date **February 2005**

Supersedes Section 912 Page 264
Dated December 1999

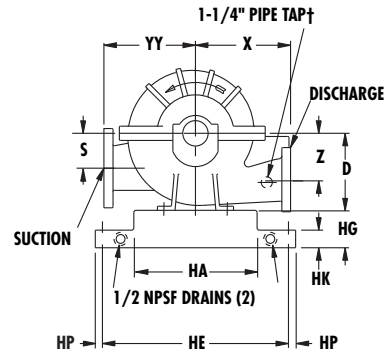
THIS PAGE LEFT INTENTIONALLY BLANK

AURORA 485 PUMPS

ON STEEL DRIP RIM BASE

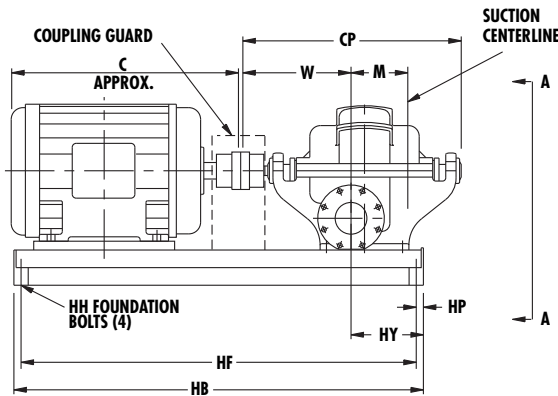


RIGHT HAND ROTATION

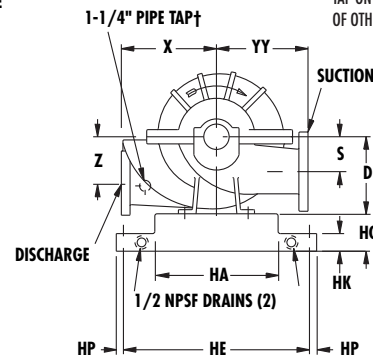


VIEW A-A

† PIPE TAP ON BOTH SIDES OF 5-485-12 AND 6-485-12. PIPE TAP ON NEAR SIDE OF OTHER PUMPS.



LEFT HAND ROTATION



VIEW A-A

* 150# AND 300# OR 300# AND 300# SUCTION AND DISCHARGE DUCTILE IRON FOR 5-485-12 AND 6-485-12

| PUMP SIZE | | STANDARD* 125# SUCTION AND 250# DISCHARGE FLANGE | | OPTIONAL* 250# SUCTION AND DISCHARGE FLANGES | | RIGHT HAND ROTATION | | LEFT HAND ROTATION | | RIGHT HAND ROTATION | | LEFT HAND ROTATION | | MOTOR FRAME | 26 | 28 | 27 | 29 | 28 | 30 | 30 | 33 | 32 | 36 | 34 | 36 | 39 | 44 | 45 | |
|-----------|-------|--|---------|--|--------------|---------------------|-------------|--------------------|--------------|---------------------|-------------|--------------------|--------------|--------------|---------------|------|-------|-------|-------|-------|-------|-------|-------|-------|-------|-------|-------|-------|-------|--------|
| DISCH | MODEL | CASE BORE | SUCTION | POWER SERIES | D | M | S | W | W | X | Z | CP | HY | HY | YY | C | (660) | (711) | (685) | (736) | (711) | (761) | (761) | (838) | (812) | (914) | (863) | (914) | (991) | (1143) |
| 4 | 485 | 15 | 5 | 3 | 11 (279) | 7-1/8 (181) | 5 (127) | 18-7/8 (479) | 15-1/8 (384) | 13 (330) | 6-1/2 (165) | 31 (787) | 4-5/8 (117) | 8-3/8 (213) | 13-1/2 (343) | BASE | 12 | 12 | 12 | 12 | 12 | 12 | 15 | 16 | 16 | 16 | 16 | 16 | 16 | 16 |
| 5 | 485 | 12 | 5 | 4A | 14 (356) | 6-5/8 (168) | 7 (178) | 20-7/8 (530) | 18-1/8 (460) | 13 (330) | 7 (178) | 35-3/8 (889) | 11-1/8 (283) | 13-7/8 (352) | 13 (330) | BASE | | | | | | | 17 | 17 | 17 | 17 | 17 | 17 | 18 | 18 |
| 5 | 485 | 15 | 6 | 4 | 12-1/2 (317) | 9-1/8 (232) | 5-1/2 (140) | 21-1/8 (536) | 16-7/8 (428) | 15 (381) | 7-1/2 (190) | 34-1/2 (876) | 5-3/8 (143) | 9-5/8 (244) | 15-7/16 (392) | BASE | 12 | 12 | 12 | 12 | 12 | 13 | 16 | 16 | 16 | 16 | 16 | 16 | 16 | 16 |
| 6 | 485 | 12 | 6 | 5A | 15 (381) | 7-1/2 (191) | 8 (203) | 22-7/8 (581) | 19-5/8 (498) | 14 (356) | 8 (203) | 38-1/2 (978) | 10-7/8 (276) | 14-1/8 (359) | 14 (356) | BASE | | | | | | | | 17 | 17 | 17 | 17 | 18 | 18 | |
| 6 | 485 | 16/168 | 8 | 5 | 16.5 (419) | 10.5 (267) | 8.25 (210) | 23.63 (600) | 18.38 (467) | 19 (483) | 7.75 (197) | 37.88 (962) | 5 (127) | 10.25 (260) | 17 (432) | BASE | | | | | | 16 | 16 | 16 | 16 | 16 | 16 | 17 | 17 | 17 |
| 6 | 485 | 17 | 8 | 5 | 14-3/4 (374) | 11 (279) | 7 (178) | 24-1/2 (622) | 17-1/2 (444) | 16 (406) | 9 (228) | 38 (964) | 4 (102) | 11 (279) | 16-1/2 (419) | BASE | | | | | | 13 | 13 | 16 | 16 | 16 | 16 | 16 | 16 | 16 |

| BASE SIZE | HA | HB | HE | HF | HG | HH | HK | HP |
|-----------|----------|---------------|--------------|---------------|-------------|----------|--------|------------|
| 12 18x54 | 18 (457) | 54-1/2 (1383) | 25-1/8 (638) | 52-7/8 (1342) | 4 (102) | 3/4 (19) | 2 (51) | 13/16 (21) |
| 13 18x64 | 18 (457) | 64-1/2 (1637) | 25-1/8 (638) | 62-7/8 (1593) | 4 (102) | 3/4 (19) | 2 (51) | 13/16 (21) |
| 15 22x54 | 22 (559) | 54-1/2 (1383) | 29-1/8 (740) | 52-7/8 (1342) | 4-1/2 (114) | 3/4 (19) | 2 (51) | 13/16 (21) |
| 16 22x64 | 22 (559) | 64-1/2 (1637) | 29-1/8 (740) | 62-7/8 (1593) | 4-1/2 (114) | 3/4 (19) | 2 (51) | 13/16 (21) |
| 17 22x74 | 22 (559) | 74-1/2 (1892) | 29-1/8 (740) | 72-7/8 (1851) | 4-1/2 (114) | 3/4 (19) | 2 (51) | 13/16 (21) |
| 18 22x82 | 22 (559) | 82-1/2 (2096) | 29-1/8 (740) | 80-7/8 (2054) | 4-1/2 (114) | 3/4 (19) | 2 (51) | 13/16 (21) |

NOTES

- All dimensions are in inches (mm) and may vary ± 3/8" (10).
- Not for construction purposes unless certified.
- Coupling gap may vary 1/8" (3) thru 1" (25).
- Conduit box is shown in approximate location.

Dimensions are not specified as they vary with each motor manufacturer.

- Suction and discharge flanges are ANSI standard flat face.
- Three grout holes are provided in top of base.

AURORA MODEL 491 PUMPS

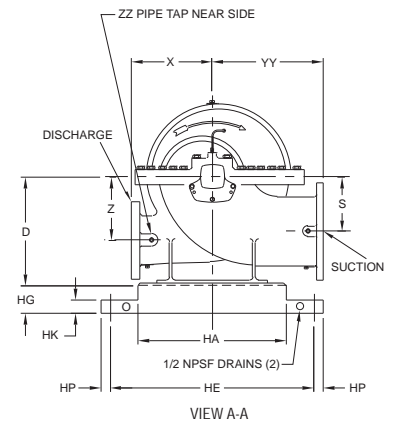
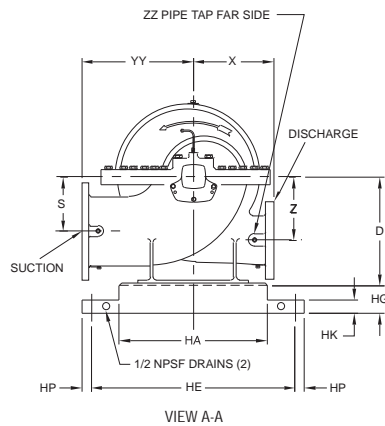
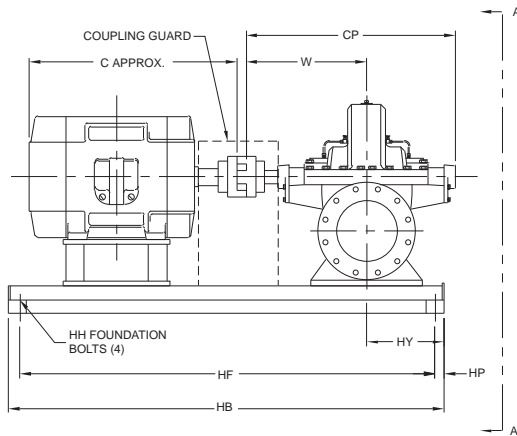
ON STEEL DRIP RIM BASE

Section **912** Page **271**

Date **February 2005**

Supersedes Section 912 Page 311

Dated April 2003



RIGHT HAND ROTATION

LEFT HAND ROTATION

| PUMP SIZE | | STANDARD* 125# SUCTION AND DISCHARGE FLANGES | OPTIONAL 125# SUCTION FLANGE, 250# DISCHARGE FLANGE | OPTIONAL 250# SUCTION AND DISCHARGE FLANGES | MOTOR FRAME | 254T | 256T | 284T | 286T | 324T | 326T | 364T | 366T | 404T | 406T | 444T | 446T | 449T | 451T | 453T | 455T | 457T | 459T | | | | | | | | | | | | | | | | | | |
|-----------|-------|--|---|---|-----------------|------------------|-----------------|-----------------|-------------------|-----------------|-----------------|------|-------------|------|------|------|------|------|------|------|------|------|------|-----|-----|-----|-----|-----|-----|-----|-----|-----|------|------|------|------|------|----|----|----|----|
| DISCH | MODEL | CASE BORE | SUCTION | D | S | W | X | Z | CP | HY | YY | ZZ | C APPROX | 533 | 584 | 558 | 609 | 609 | 635 | 635 | 660 | 660 | 711 | 736 | 736 | 762 | 762 | 838 | 889 | 863 | 965 | 914 | 1016 | 1016 | 1117 | 1143 | 1244 | | | | |
| 3 | 491 | 9C | 5 | 12 (304) | 6-1/8 (155) | 14-5/8 (371) | 11 (279) | 6-1/8 (155) | 25-15/16 (658) | 10 (254) | 12 (304) | 3/4 | BASE | 12 | 12 | 12 | 12 | 12 | 12 | 12 | 12 | 12 | 12 | 12 | 12 | 12 | 12 | - | - | - | - | - | - | - | - | - | - | - | | | |
| 4 | 491 | 8A | 6 | 11 (279) | 5-3/4 (146) | 14-5/8 (371) | 10 (254) | 5-1/2 (140) | 25-15/16 (658) | 8 (203) | 11-1/4 (286) | 3/4 | BASE | 12 | 12 | 12 | 12 | 12 | 12 | 12 | 12 | 12 | 12 | 12 | 12 | 12 | 12 | - | - | - | - | - | - | - | - | - | - | - | - | | |
| 4 | 491 | 11A&C | 6 | 13-3/4 (349) | 6-7/8 (174) | 16-3/8 (415) | 11-1/4 (285) | 7-1/8 (180) | 29-11/16 (754) | 10 (254) | 14 (355) | 3/4 | BASE | 12 | 12 | 12 | 12 | 12 | 12 | 12 | 12 | 12 | 12 | 12 | 12 | 13 | 13 | 16 | 16 | 16 | 16 | 16 | 16 | 16 | 16 | 16 | 16 | 16 | 16 | 16 | 16 |
| 4 | 491 | 14C | 6 | 13-3/4 (349) | 6-7/8 (174) | 17-5/8 (447) | 13 (330) | 8-3/8 (212) | 31-11/16 (804) | 12 (304) | 15-1/4 (387) | 3/4 | BASE | - | - | - | - | 16 | 16 | 16 | 16 | 16 | 16 | 16 | 16 | 16 | 16 | 16 | 16 | 16 | 16 | 16 | 16 | 16 | 16 | 16 | 16 | 16 | 16 | 16 | |
| 5 | 491 | 14A | 8 | 16-1/4 (412) | 8-1/4 (209) | 17-5/8 (447) | 13-1/2 (342) | 9-3/4 (247) | 31-11/16 (804) | 12 (304) | 17-1/4 (438) | 1 | BASE | - | - | - | 16 | 16 | 16 | 16 | 16 | 16 | 16 | 16 | 16 | 16 | 16 | 16 | 16 | 16 | 16 | 16 | 16 | 16 | 16 | 16 | 16 | 16 | 16 | 16 | 16 |
| 5 | 491 | 18A | 8 | 16-1/4 (412) | 8-1/8 (206) | 18-7/8 (479) | 15 (381) | 10-5/8 (269) | 33-3/8 (847) | 12 (304) | 18-3/4 (476) | 1 | BASE | - | - | - | - | - | - | - | - | - | - | - | 16 | 16 | 16 | 16 | 16 | 16 | 16 | 16 | 16 | 16 | 16 | 16 | 16 | 16 | 16 | 16 | 16 |
| 6 | 491 | 12A | 6 | 13-3/4 (349) | 6-7/8 (174) | 16-5/8 (422) | 20-1/2 (520) | 7-1/8 (180) | 29-11/16 (754) | 10 (254) | 14 (355) | 1 | BASE | 12 | 12 | 12 | 12 | 12 | 12 | 12 | 12 | 12 | 12 | 12 | 13 | 13 | 13 | 13 | 16 | 16 | 16 | 16 | 16 | 16 | 16 | 16 | 16 | 16 | 16 | 16 | 16 |
| 6 | 491 | 14C | 10 | 18-3/4 (476) | 9-3/8 (238) | 20-1/8 (511) | 13-1/4 (336) | 10 (254) | 35-7/8 (911) | 12 (304) | 18 (457) | 1 | BASE | - | 16 | 16 | 16 | 16 | 16 | 16 | 16 | 16 | 16 | 16 | 16 | 16 | 16 | 16 | 16 | 16 | 16 | 16 | 16 | 16 | 16 | 16 | 16 | 16 | 16 | 16 | |
| 6 | 491 | 18C | 10 | 18-3/4 (476) | 9-3/8 (238) | 20-1/8 (511) | 16 (406) | 11-3/4 (298) | 35-7/8 (911) | 13-1/2 (343) | 20 (508) | 1 | BASE | - | - | - | 21 | 21 | 21 | 21 | 21 | 21 | 21 | 21 | 21 | 21 | 21 | 21 | 21 | 21 | 21 | 21 | 21 | 21 | 21 | 21 | 21 | 21 | 21 | 23 | 23 |
| 6 | 491 | 19A | 10 | 18-3/4 (476) | 9-3/8 (238) | 22-5/8 (574) | 18 (457) | 12-1/8 (307) | 39-1/4 (996) | 13-1/2 (342) | 22 (558) | 1 | BASE | - | - | - | - | - | - | - | - | - | - | - | - | - | - | - | - | - | 23 | 23 | 23 | 23 | 23 | 23 | 23 | 23 | 23 | | |
| 8 | 491 | 14A | 12 | 21-1/2 (546) | 10-3/4 (273) | 20-1/2 (520) | 16 (406) | 10-3/4 (273) | 36-5/8 (930) | 13-1/2 (342) | 22 (558) | 1 | BASE | - | - | - | - | - | - | - | - | - | - | - | - | - | 21 | 21 | 21 | 21 | 21 | 21 | 21 | 21 | 21 | 21 | 21 | 21 | 21 | 21 | |
| 8 | 491 | 18A | 12 | 21-1/2 (546) | 10-3/4 (273) | 23-3/4 (603) | 16 (406) | 12-1/2 (317) | 41-1/2 (1054) | 13-1/2 (342) | 22 (558) | 1 | BASE | - | - | - | - | - | - | - | - | - | - | - | - | - | 21 | 21 | 21 | 21 | 21 | 21 | 21 | 21 | 21 | 21 | 21 | 21 | 21 | 21 | |
| 10 | 491 | 20 | 16 | 24 (609) | 13 (330) | 25-9/16 (649) | 23 (584) | 14-1/4 (361) | 44-9/16 (1131) | 15 (381) | 25 (635) | 1 | BASE | - | - | - | - | - | - | - | - | - | - | - | - | - | - | - | - | - | - | - | - | - | 23 | 23 | 23 | 20 | 20 | | |

*STD 125# SUCTION FLANGE AND
250# DISCHARGE FLANGE
FOR 6-491-12A

NOTES

- All dimensions are in inches.
- Dimensions may vary $\pm 3/8"$.
- Not for construction purposes unless certified.
- Coupling gap may vary 1/8" thru 3".
- Conduit box is shown in approximate location. Dimensions are not specified as they vary with each motor manufacturer.
- Suction and discharge flanges are ANSI standard flat face.
- Structural steel bases are used for pumps with motor frames larger than 449T (refer to factory)

| BASE | SIZE | HA | HB | HE | HF | HG | HH | HK | HP |
|------|-------|-------------|------------------|-----------------|------------------|----------------|-------------|-----------|---------------|
| 12 | 18x54 | 18 (457) | 54-1/2 (1384) | 25-1/8 (638) | 52-7/8 (1343) | 4 (101) | 3/4 (19) | 2 (50) | 13/16 (20) |
| 13 | 18x64 | 18 (457) | 64-1/2 (1638) | 25-1/8 (638) | 62-7/8 (1597) | 4 (101) | 3/4 (19) | 2 (50) | 13/16 (20) |
| 16 | 22x64 | 22 (558) | 64-1/2 (1638) | 29-1/8 (739) | 62-7/8 (1597) | 4-1/2 (114) | 3/4 (19) | 2 (50) | 13/16 (20) |
| 17 | 22x74 | 22 (558) | 74-1/2 (1892) | 29-1/8 (739) | 72-7/8 (1851) | 4-1/2 (114) | 3/4 (19) | 2 (50) | 13/16 (20) |
| 20 | 26x90 | 26 (660) | 90-1/2 (2298) | 33-1/8 (841) | 88-7/8 (2257) | 4-1/2 (114) | 3/4 (19) | 2 (50) | 13/16 (20) |
| 21 | 26x72 | 26 (660) | 72-1/2 (1841) | 33-1/8 (841) | 70-7/8 (1800) | 4-1/2 (114) | 3/4 (19) | 2 (50) | 13/16 (20) |
| 23 | 26x84 | 26 (660) | 84-1/2 (2146) | 33-1/8 (841) | 82-7/8 (2105) | 4-1/2 (114) | 3/4 (19) | 2 (50) | 13/16 (20) |

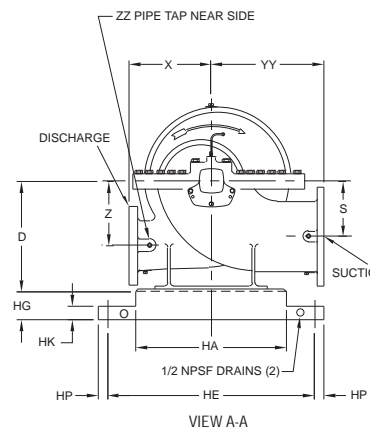
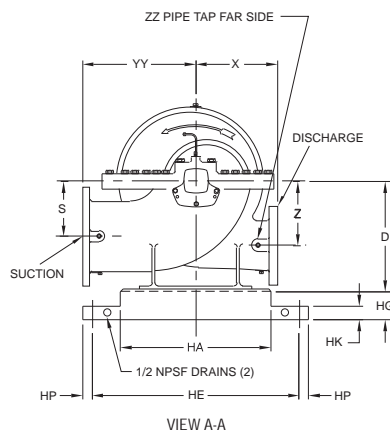
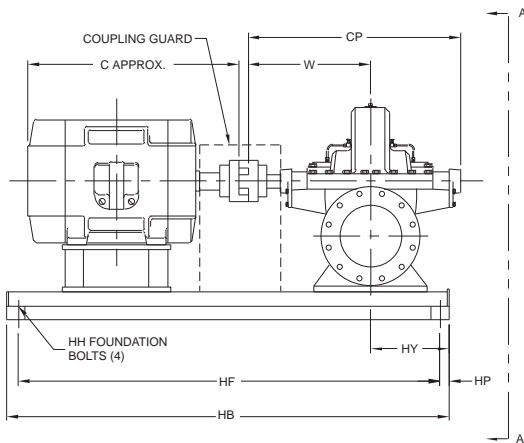
AURORA MODEL 492 PUMPS

Date March 2009

ON STEEL DRIP RIM BASE

Supersedes Section 912 Page 312

Dated February 2005



RIGHT HAND ROTATION

LEFT HAND ROTATION

| PUMP SIZE | | STANDARD 125# SUCTION AND DISCHARGE FLANGES | | | | | | | OPTIONAL 125# SUCTION FLANGE, 250# DISCHARGE FLANGE | | | | OPTIONAL 250# SUCTION AND DISCHARGE FLANGES | | | | MOTOR FRAME | C APPROX. | | | | | | | | | | | | | | | | | | | | | | | | |
|-----------|-------|---|---------|--------------|--------------|---------------|--------------|--------------|---|----------|--------------|-----|---|------|------|-------|-------------|-----------|------|-------|------|-------|------|-------|------|-------|------|-------|------|-------|------|-------|------|-------|------|-------|------|-------|------|----|----|----|
| DISCH | MODEL | CASE BORE | SUCTION | D | S | W | X | Z | CP | HY | YY | ZZ | BASE | 254T | 256T | 284TS | 284T | 286TS | 286T | 324TS | 324T | 326TS | 326T | 364TS | 364T | 365TS | 365T | 404TS | 404T | 405TS | 405T | 444TS | 444T | 445TS | 445T | 447TS | 447T | 449TS | 449T | | | |
| 3 | 492 | 10A | 4 | 10-1/2 (267) | 5-1/2 (140) | 16-1/2 (419) | 10 (254) | 5-1/2 (140) | 29-3/16 (738) | 7 (178) | 10 (254) | 1 | BASE | 12 | 12 | 12 | 12 | 12 | 12 | 12 | 12 | 12 | 12 | 12 | 12 | 12 | 12 | 12 | 12 | 12 | 12 | 12 | 12 | 12 | 12 | 12 | 12 | 12 | 12 | 12 | 12 | |
| 4 | 492 | 10 | 6 | 13 (330) | 6-1/2 (165) | 16-7/8 (428) | 10-1/4 (260) | 6-1/2 (165) | 29-13/16 (757) | 10 (254) | 11 (279) | 3/4 | BASE | - | - | - | - | - | 12 | 12 | 12 | 12 | 12 | 12 | 12 | 12 | 12 | 12 | 12 | 12 | 12 | 12 | 12 | 12 | 12 | 12 | 12 | 12 | 12 | 12 | 12 | 12 |
| 4 | 492 | 14 | 5 | 12-1/2 (317) | 7-3/8 (187) | 18-3/8 (466) | 13-1/2 (342) | 7-3/8 (187) | 33-3/16 (844) | 10 (254) | 14 (355) | 3/4 | BASE | - | 12 | 12 | 12 | 12 | 12 | 12 | 12 | 12 | 12 | 12 | 12 | 12 | 12 | 12 | 12 | 12 | 12 | 12 | 12 | 12 | 12 | 12 | 12 | 12 | 12 | 12 | 12 | 12 |
| 4 | 492 | 18 | 5 | 14-3/4 (374) | 9-1/2 (241) | 18-3/8 (466) | 14 (355) | 9-1/2 (241) | 33-1/4 (844) | 11 (279) | 14 (355) | 3/4 | BASE | - | - | - | - | - | - | 13 | 13 | 13 | 13 | 13 | 13 | 13 | 13 | 13 | 13 | 13 | 13 | 13 | 13 | 13 | 13 | 13 | 13 | 13 | 13 | 13 | 13 | |
| 5 | 492 | 10 | 8 | 16 (406) | 8 (203) | 20 (508) | 12-1/2 (317) | 7 (118) | 35-1/2 (901) | 11 (279) | 13 (330) | 1 | BASE | 12 | 12 | 13 | 13 | 13 | 13 | 13 | 13 | 13 | 13 | 13 | 13 | 13 | 13 | 13 | 13 | 13 | 13 | 13 | 13 | 13 | 13 | 13 | 13 | 13 | 13 | 13 | 13 | 13 |
| 5 | 492 | 18 | 6 | 16 (406) | 10 (254) | 21 (533) | 14 (355) | 10 (254) | 37-1/8 (942) | 11 (279) | 14 (355) | 1 | BASE | - | - | - | - | - | - | 16 | 16 | 16 | 16 | 16 | 16 | 16 | 16 | 16 | 16 | 16 | 16 | 16 | 16 | 16 | 16 | 16 | 16 | 16 | 16 | 16 | 16 | 16 |
| 6 | 492 | 10 | 10 | 18 (457) | 9 (228) | 20-5/8 (523) | 13 (330) | 7-1/2 (190) | 36-3/4 (933) | 11 (279) | 15 (381) | 1 | BASE | - | - | - | - | - | - | - | - | - | - | - | - | - | 16 | 16 | 16 | 16 | 16 | 16 | 16 | 16 | 16 | 16 | 16 | 16 | 16 | 16 | 16 | 16 |
| 6 | 492 | 15 | 8 | 15-1/2 (394) | 8-3/4 (222) | 22-1/2 (571) | 15 (381) | 8-3/4 (222) | 40-1/4 (1022) | 13 (330) | 15-1/2 (394) | 1 | BASE | - | - | - | 13 | 13 | 13 | 13 | 13 | 13 | 13 | 13 | 13 | 13 | 13 | 13 | 13 | 13 | 13 | 13 | 13 | 13 | 13 | 13 | 13 | 13 | 13 | 13 | 13 | 13 |
| 8 | 492 | 15 | 10 | 17-1/2 (444) | 9-1/4 (234) | 22-1/2 (571) | 17 (431) | 9-1/4 (234) | 40-1/4 (1022) | 13 (330) | 17 (431) | 1 | BASE | - | - | - | - | - | - | 16 | 16 | 16 | 16 | 16 | 16 | 16 | 16 | 16 | 16 | 16 | 16 | 16 | 16 | 16 | 16 | 16 | 16 | 16 | 16 | 16 | 16 | 16 |
| 10 | 492 | 18 | 12 | 21-3/4 (552) | 11-1/2 (292) | 25-9/16 (649) | 21 (533) | 11-1/2 (292) | 45-13/16 (1163) | 15 (381) | 21 (533) | 1 | BASE | - | - | - | - | - | - | - | - | - | - | - | - | - | - | - | - | - | - | - | - | - | - | - | 23 | 23 | 20 | 20 | | |

| BASE | SIZE | HA | HB | HE | HF | HG | HH | HK | HP |
|------|-------|----------|---------------|--------------|---------------|-------------|----------|--------|------------|
| 12 | 18x54 | 18 (457) | 54-1/2 (1384) | 25-1/8 (638) | 52-7/8 (1343) | 4 (101) | 3/4 (19) | 2 (50) | 13/16 (20) |
| 13 | 18x64 | 18 (457) | 64-1/2 (1638) | 25-1/8 (638) | 62-7/8 (1597) | 4 (101) | 3/4 (19) | 2 (50) | 13/16 (20) |
| 16 | 22x64 | 22 (558) | 64-1/2 (1638) | 29-1/8 (739) | 62-7/8 (1597) | 4-1/2 (114) | 3/4 (19) | 2 (50) | 13/16 (20) |
| 17 | 22x74 | 22 (558) | 74-1/2 (1892) | 29-1/8 (739) | 72-7/8 (1851) | 4-1/2 (114) | 3/4 (19) | 2 (50) | 13/16 (20) |
| 18 | 22x82 | 22 (558) | 82-1/2 (2095) | 29-1/8 (739) | 80-7/8 (2054) | 4-1/2 (114) | 3/4 (19) | 2 (50) | 13/16 (20) |
| 20 | 26x90 | 26 (660) | 90-1/2 (2298) | 33-1/8 (841) | 88-7/8 (2257) | 4-1/2 (114) | 3/4 (19) | 2 (50) | 13/16 (20) |
| 21 | 26x72 | 26 (660) | 72-1/2 (1841) | 33-1/8 (841) | 70-7/8 (1800) | 4-1/2 (114) | 3/4 (19) | 2 (50) | 13/16 (20) |
| 23 | 26x84 | 26 (660) | 84-1/2 (2146) | 33-1/8 (841) | 82-7/8 (2105) | 4-1/2 (114) | 3/4 (19) | 2 (50) | 13/16 (20) |

NOTES

- All dimensions are in inches.
- Dimensions may vary ± 3/8".
- Not for construction purposes unless certified.
- Coupling gap may vary 1/8" thru 3".
- Conduit box is shown in approximate location. Dimensions are not specified as they vary with each motor manufacturer.
- Suction and discharge flanges are ANSI standard flat face.
- Structural steel bases are used for pumps with motor frames larger than 449T (refer to factory)

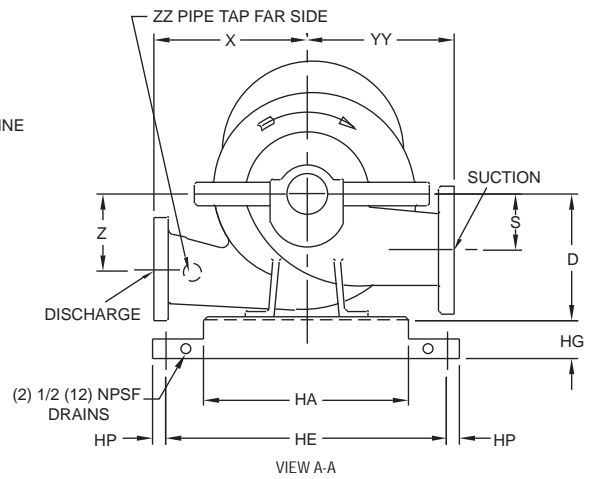
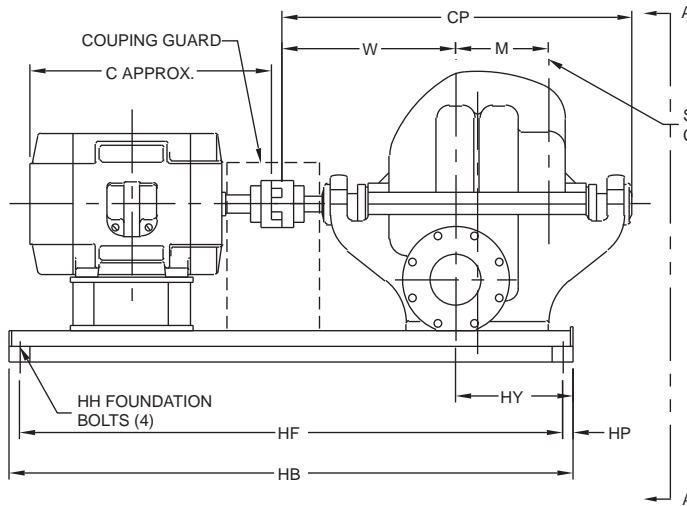
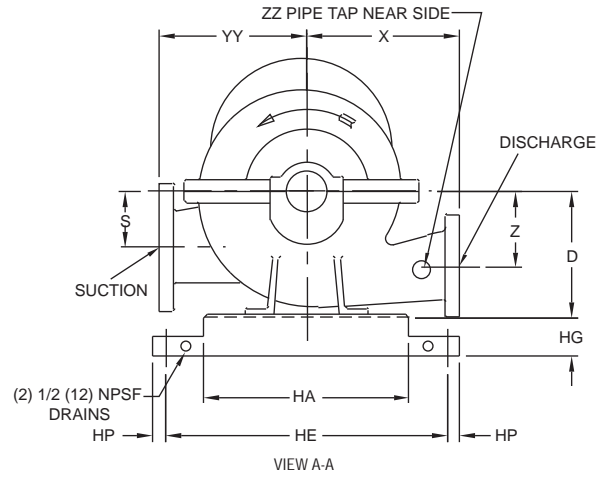
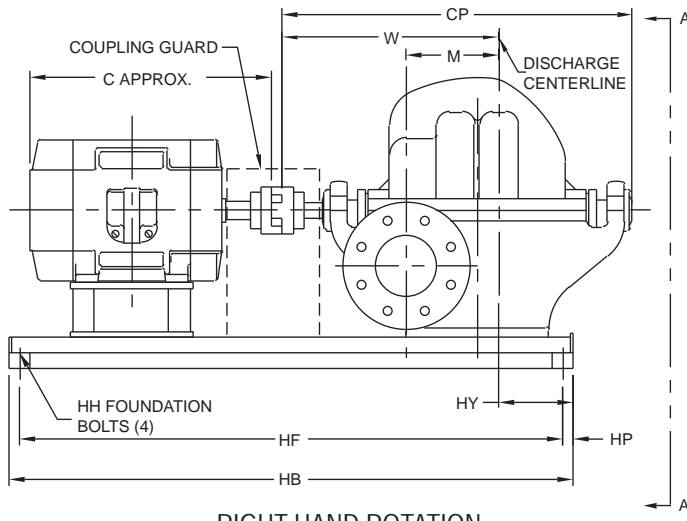
AURORA MODEL 495 PUMPS

ON STEEL DRIP RIM BASE

Date February 2005

Supersedes Section 912 Page 313

Dated December 1999



| PUMP SIZE | | STANDARD 125# SUCTION FLANGE, 250# DISCHARGE FLANGE | | | | | | | | | | | OPTIONAL 250# SUCTION AND DISCHARGE FLANGE | | | | | | | | | | | MOTOR FRAME | | | | | | | | | | |
|-----------|-------|---|---------|-----------------|------------|-----------------|-----------------|-----------------|-----------------|------------------|------------------|-----------------|--|-----------|----------|-------------|-------------|-------------|-------------|-------|------|-------|------|-------------|------|-------|------|---|--|--|--|--|--|--|
| DISCH | MODEL | CASE BORE | SUCTION | D | S | RIGHT HAND W | LEFT HAND W | X | Z | CP | RIGHT HAND HY | LEFT HAND HY | YY | ZZ | C APPROX | 404TS | 404T | 405TS | 405T | 444TS | 444T | 445TS | 445T | 447TS | 447T | 449TS | 449T | | | | | | | |
| 5 | 495 | 15 | 6 | 17 (431) | 9 (228) | 28-3/8 (720) | 23-3/8 (593) | 15 (381) | 9 (228) | 46-7/8 (1190) | 13-1/2 (342) | 18-1/2 (469) | 15 (381) | 1 | BASE | 17 (762) | 17 (838) | 17 (812) | 17 (889) | - | - | - | - | - | - | - | - | - | | | | | | |
| 6 | 495 | 17 | 8 | 17-1/2 (444) | 9 (228) | 31-5/8 (803) | 25-1/8 (638) | 16-1/2 (419) | 10-1/2 (266) | 52-1/2 (1333) | 12-3/4 (3238) | 19-1/4 (488) | 16-1/2 (419) | 1 (25) | BASE | - | - | - | - | 23 | 23 | 23 | 23 | 24 | 24 | 24 | 24 | | | | | | | |

| BASE | HA | HB | HE | HG | HH | HF | HP |
|------|-------------|--------------|-------------|----------------|-------------|--------------|-----------|
| 17 | 22 (558) | 84 (2133) | 19 (482) | 4 (101) | 5/8 (15) | 82 (2082) | 1 (25) |
| 23 | 26 (660) | 84 (2133) | 23 (584) | 4-1/2 (114) | 5/8 (15) | 82 (2082) | 1 (25) |
| 24 | 26 (660) | 96 (2438) | 23 (584) | 4-1/2 (114) | 5/8 (15) | 94 (2387) | 1 (25) |

NOTES

1. All dimensions are in inches.
2. Dimensions may vary $\pm 3/8"$.
3. Not for construction purposes unless certified.
4. Coupling gap may vary 1/8" thru 3".
5. Conduit box is shown in approximate location. Dimensions are not specified as they vary with each motor manufacturer.
6. Suction and discharge flanges are ANSI standard flat face.

Section **912** Page **274**

Date **February 2005**

Supersedes Section 912 Page 314
Dated December 1999

THIS PAGE LEFT INTENTIONALLY BLANK