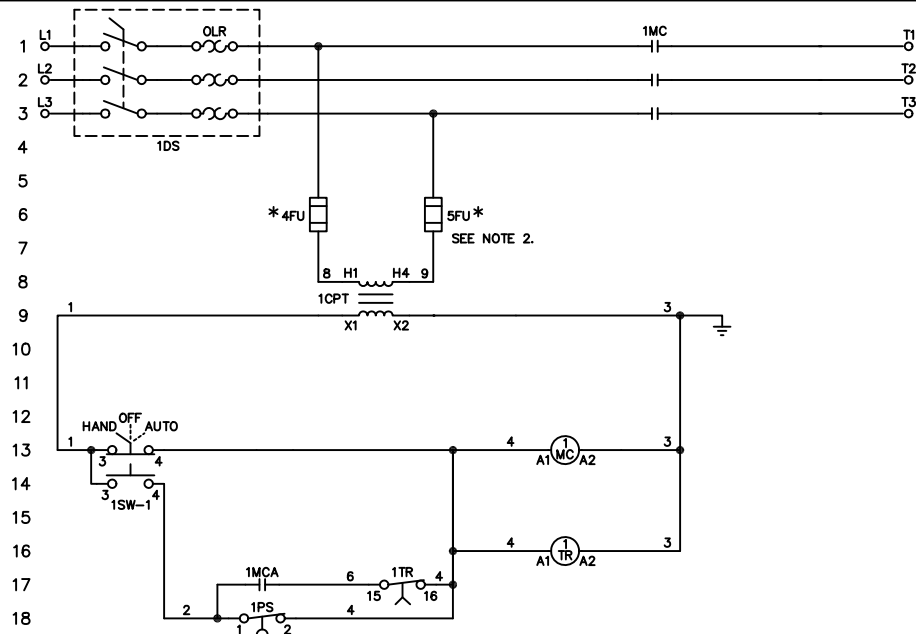


COMPONENTS FUNCTION LOCATION CONTACTS

1TR	RUN PERIOD TIMER	16	17
1MC	MOTOR CONTACTOR	13	1,2,3
1CPT	CONTROL PWR. TRANSFORMER	8	
1DS	MOTOR PROTECTOR	1,2,3	
4FU	CONTROL FUSE	6	
5FU	CONTROL FUSE	6	
1PS	PRESSURE SWITCH	18	
1SW	HAND/OFF/AUTO SELECTOR SW.	13	




NOTES FOR FIELD WIRING:

1) USE COPPER WIRING ONLY EXCEPT AT TERMINALS MARKED CU-AL,

2) TO REDUCE THE RISK OF FIRE, REPLACE WITH SAME TYPE AND RATING AS FUSE ORIGINALLY INSTALLED.

*** CONTROL FUSE SIZING TO BE AS FOLLOWS:**

VA RATING	200-208 VAC	220-240 VAC	380-415 VAC	440-480 VAC	550-600 VAC
75 VA	1.8 AMP	1.5 AMP	0.8 AMP	0.8 AMP	0.6 AMP
150 VA	3.5 AMP	3.0 AMP	1.8 AMP	1.5 AMP	1.25 AMP

DRAWN	SR	3-1-95	 METRON, INC. DENVER, CO.
CHECK	x.d.	3-1-95	
APPD	RL	3-1-95	
SCHEMATIC, MODEL M15A, THREE PHASE WITH MOTOR PROTECTOR SWITCH JOCKEY PUMP CONTROLLER, W/XFMR.			CS32269D SCALE N.T.S. SHEET 1 OF 1