

# SIMPLE JD 6-253 G10 FHT17 V02

Diesel - Qmax 340 m<sup>3</sup>/h (1,500 USGPM) - Hmax 23 m (75.5 ft)



## Product data

<b>Suction port</b>	Spherical coupling 6"
<b>Delivery port</b>	Spherical coupling 6"
<b>Qmax</b>	340 m <sup>3</sup> /h (1,500 USGPM)
<b>Hmax</b>	23 m (75.5 ft)
<b>Solids handling</b>	45 mm (1.8")
<b>Engine</b>	Hatz 3M41
<b>Engine power</b>	28,0 kW - 37.5 HP
<b>Vacuum pump</b>	V02 rotary vane
<b>Weight</b>	1.060 kg (2,340 lb)

Indicative picture of the product

## Simple J

### Vacuum-assisted self-priming centrifugal pumps (oil lubricated vacuum pump)

The system consists of a **J self-priming centrifugal pump** and a **Simple separator** where air can separate from the liquid and be sucked by a vacuum pump which makes possible the **automatic priming**; even with suction heights of several meters the machine rapidly evacuates the air from the suction pipe and starts to pump. The Simple is capable of drawing significant quantities of air and maintaining a wellpoint system under vacuum, or draining an excavation thanks to the **semi-open impeller** which makes the J also suitable for pumping liquids with **solids in suspension**.

## Applications

Varisco S.p.A. has a long-standing experience in designing and producing pumps and now has a wide range of vacuum-assisted pumps. The Simple has features that not only meet the needs of the market but make it an extremely versatile product suitable for the professionals of **Constructions, Industry and Emergency duty**.

**Drainage of excavations, canals and ponds**  
**Ground water dewatering with wellpoint systems**  
**Sewage by-pass**  
**Naval platforms ballasting**  
**Drainage after flooding or terrenal rains**

## Benefits

### Rapid "dry" priming

up to a height of 8.5 m (27.5 ft)

### High resistance

to abrasive liquids and turbid sandy waters

### Semi-open impeller

solids handling up to 45 mm (1.8")

### Wear plates

in cast iron lined with abrasion resistant rubber, easily replaceable, front and rear to the impeller

### Connections

Suction at only 0,7 m (2.2 ft) from ground level

# SIMPLE JD 6-253 G10 FHT17 V02

## Performance curves



Test according to UNI EN ISO 9906 standard - level 2

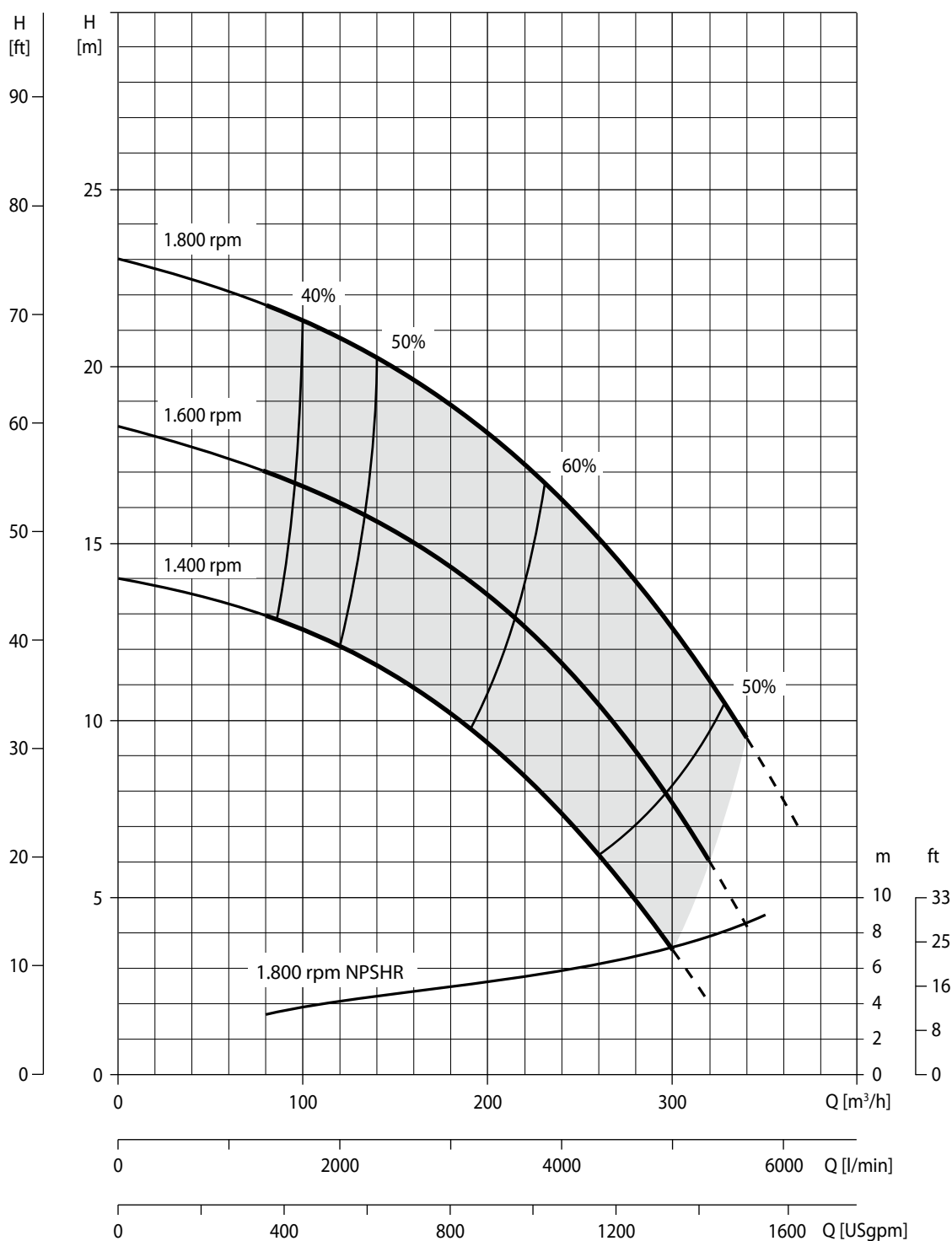
Test liquid: clean water, density  $1,000 \text{ kg/m}^3$

Spherical solids handling: D.45 mm (1.8")

Priming time: 35 s from 1,5 m (4.9 ft)

Max absorbed power: 18,8 kW - 25.2 HP (1.800 rpm)

 Recommended operating range



# SIMPLE JD 6-253 G10 FHT17 V02



## Technical data

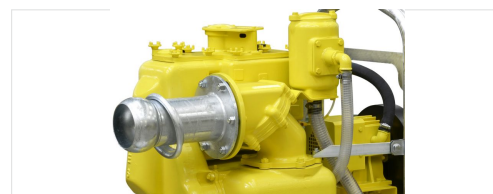
### Pump

Pump model	J 6-253 G10
Qmax	340 m³/h - 5.670 l/min (1,500 USGPM)
Hmax	23 m (75.5 ft)
Suction port	flanged - DN 150 D.I. 1882 (6")
Delivery port	flanged - DN 150 D.I. 1882 (6")
Impeller type	semi-open, 3 vane
Solids handling	45 mm (1.8 ")
Casing	EN-GJL-200 cast iron
Impeller	EN-GJS-400 cast iron
Wear plates	EN-GJL-200 rubber lined cast iron
Non-return valve	check-valve, NBR
Shaft	39NiCrMo3 steel
Mechanical seal	Silicon carbide
Elastomers	NBR
Lubrication	grease



### Priming system

Vacuum pump	V02
Vacuum pump type	rotary vane
Nominal air capacity	75 m³/h (44.1 cfm)
Max vacuum	0,9 bar
Separator type	Simple
Separator material	EN-GJL-200 cast iron
Drives	Link belt



### Engine

Make	Hatz
Model	3M41
Type	diesel direct injection, aspirated
Displacement	2.574 cm³ (157 in³)
No. cylinders	3
Cooling	air
Power max	28,0 kW - 37.5 HP (Continuous power - ISO 3046 ICXN)
Speed	variable
Standard speed	1.800 rpm (engine calibration)
Maximum consumption	6,7 l/h (1.8 USG/h)
EU emissions	2002/88/CE Stage 3A
US emissions	EPA Tier III
Starting	electric
Oil change interval	300 h

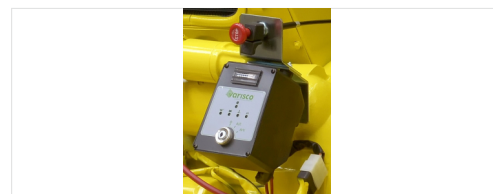


### Consumption

Speed [rpm]	1500	1600	1700	1800
Consumption[l/h]	4,1	6,1	6,4	6,7
Power[kW]	16,7	25,3	26,7	28,0
Power[HP]	22.4	33.9	35.8	37.5

### Control panel

Manual operation
Hour meter
Engine failure alarms with LED lights in case of: <ul style="list-style-type: none"><li>low oil pressure</li><li>engine overheating</li><li>lack of battery charging</li></ul>
Throttle rod



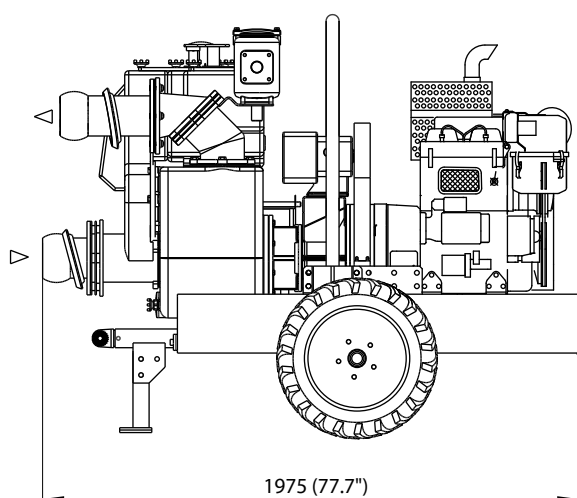
# SIMPLE JD 6-253 G10 FHT17 V02



## Arrangement

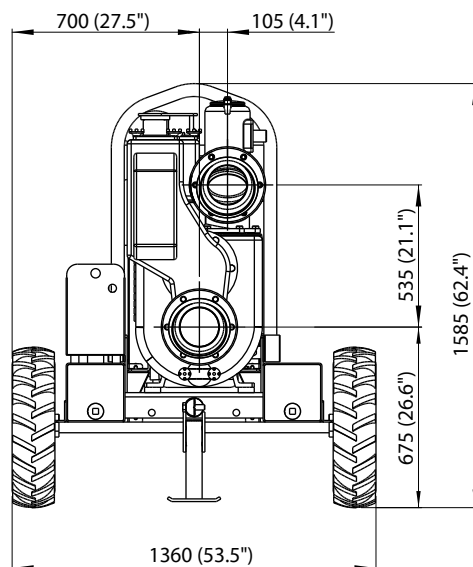
Model	Heavy duty trailer - Trailer
Dimensions	1.470 x 1.970 x 1.605 mm (58 x 78 x 63 ")
Material	S275JR EN 10025-2 carbon steel
Coatings	polyester powder, average thickness of 80 µm
Color	RAL 1018 yellow (standard)
Features	tractor tires; galvanised steel lifting bar, removable; tow bar; folding foot; lockable battery box; fuel level indicator
Lifting points	top barycentric connection
Battery	acid charge Pb-Ca maintenance free
Tank	12 V - 100 Ah - 400 A
Locking keys	130,0 l (34.3 USG)
Height connection	fuel cap
	0,7 m (2.2 ft)

## Dimensions



## Weight

Dry weight 1.060 kg (2,340 lb)



## EN ISO 9001:2008 REG. NO 44 100 091767



Varisco S.p.A. has certified its Quality Management System in accordance with the requirements of the ISO 9001:2008 international standards. The quality of the product comes from the quality of the processes: standardise activities, enhance human resources, pursue a logic of continuous improvement aiming for the constant satisfaction of its Customers.

**Varisco S.p.A.** Terza strada, 9 - Z.I. Nord 35129 PADOVA - Italy  
tel +39 049 8294 111 fax +39 049 80 76 762  
export@variscospa.com