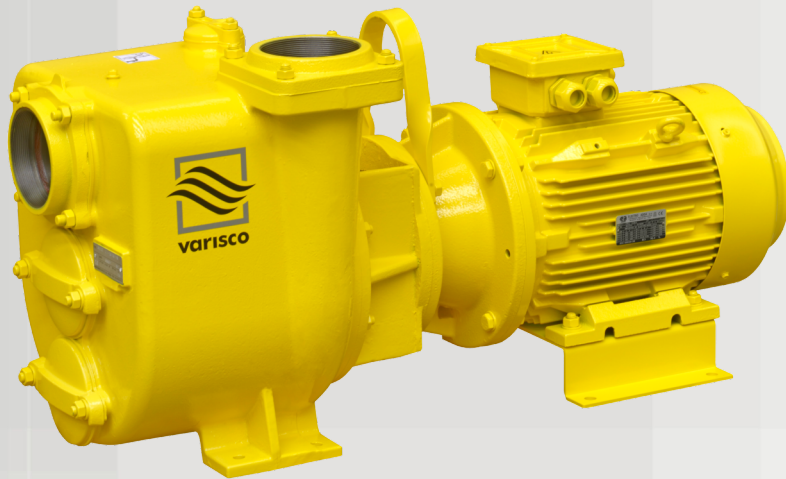


JE 4-250 P10 FT40

Electric - Qmax 165 m³/h (730 USGPM) - Hmax 20,5 m (67 ft)



Product data

Suction port	threaded - 4" BSP
Delivery port	threaded - 4" BSP
Qmax	165 m ³ /h (730 USGPM)
Hmax	20,5 m (67 ft)
Solids handling	50 mm (2")
Motor power	7,5 kW - 10 HP
Weight	218 kg (480 lb)

Indicative picture of the product

J

Self-priming centrifugal pumps

The J series self-priming centrifugal pumps are for applications where the main feature is the difficulty in priming: even with suction heights of several meters the machine quickly evacuates the air from the suction pipe and starts pumping. Furthermore, compared to other pumps, the **semi-open impeller** makes the J suitable for pumping liquids with **solids** in suspension.

Applications

Varisco S.p.A. has a long-standing experience in designing and producing self-priming pumps and now has a wide range of solutions and materials. The J have features that not only meet the needs of the market but make it an extremely versatile product suitable for professionals of **Constructions**, **Industry** and **Emergency duty**.

Drainage of excavations, canals and ponds
Ground water dewatering with wellpoint systems
Sewage by-pass
Naval platforms ballasting
Drainage after flooding or terrenal rains

Benefits

Rapid self-priming

without foot valve up to a height of 7.5 m (24.5 ft)

High resistance

to abrasive liquids and turbid sandy waters

Semi-open impeller

solids handling up to 50 mm (2")

Easy maintenance

removable front cover for direct access to the impeller and eventual unclogging

JE 4-250 P10 FT40

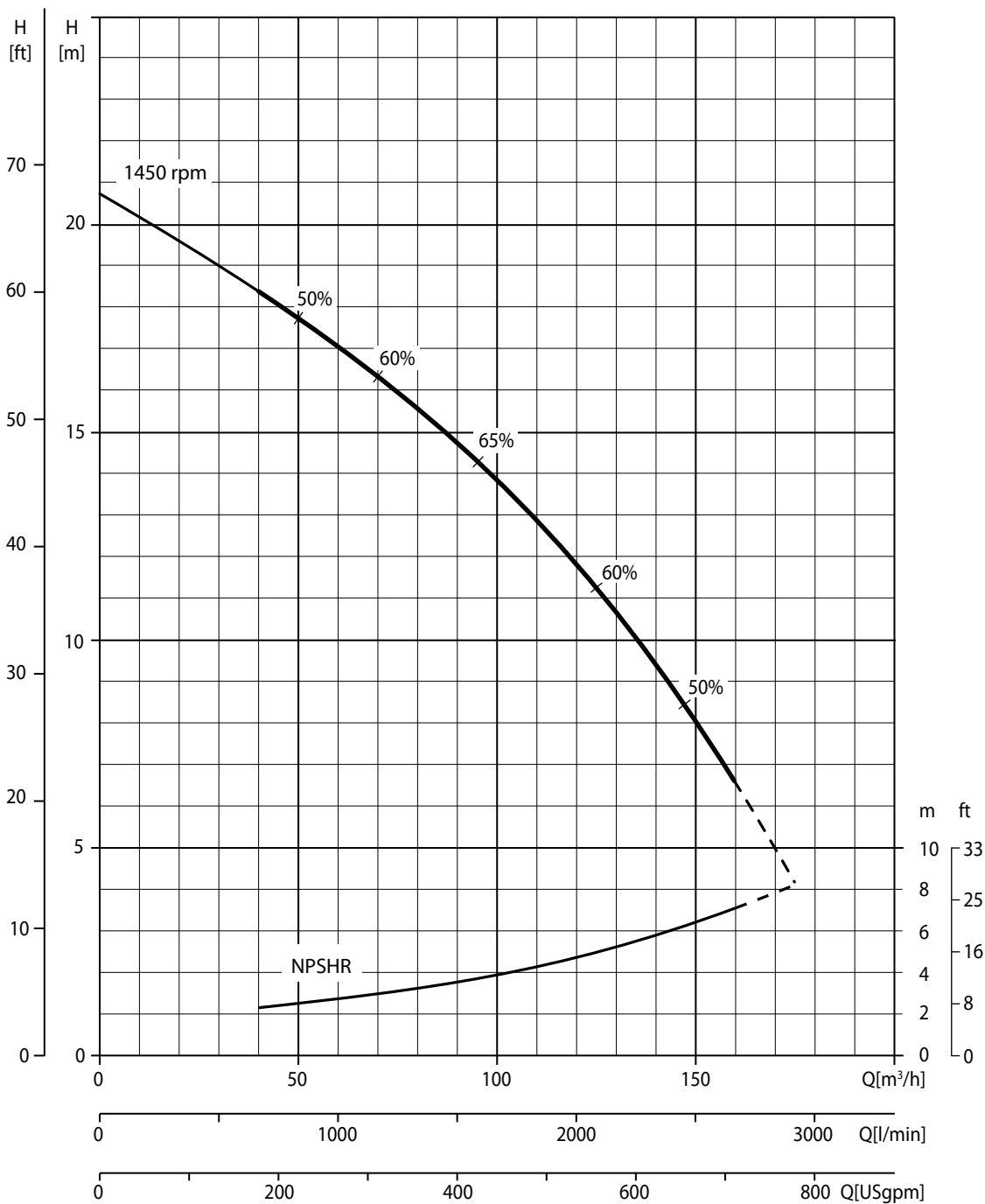


Performance curves

Speed [rpm] 1450							
Q [m³/h]							
	40	50	75	100	125	150	180
h suc. [m]	H delivery[m]						
0	16,5	15,9	14,4	13,8	11,3	9,5	7,3
1.5	14,5	14,0	12,0	11,0	8,0	5,5	-
3	13,0	12,5	10,5	9,0	6,0	-	-
4.5	11,5	10,5	8,5	7,5	-	-	-
6	10,0	9,0	7,0	-	-	-	-
7.5	8,5	-	-	-	-	-	-

Test according to UNI EN ISO 9906 standard - level 2
Test liquid: clean water, density 1,000 kg/m³
Spherical solids handling: D.50 mm (2")
Priming time: 30 s from 1,5 m (4.9 ft)
Max absorbed power: 7,5 kW - 10.1 HP (1.450 rpm)

Recommended operating range



JE 4-250 P10 FT40



Technical data

Pump

Pump model	J 4-250 P10
Qmax	165 m³/h - 2.750 l/min (700 USGPM)
Hmax	20,5 m (67 ft)
Suction port	threaded - 4" BSP
Delivery port	threaded - 4" BSP
Impeller type	semi-open, 2 vane
Solids handling	50 mm (2.0 ")
Casing	EN-GJL-200 cast iron
Impeller	EN-GJS-400 cast iron
Wear plates	EN-GJL-200 cast iron
Non-return valve	check-valve, NBR
Shaft	39NiCrMo3 steel
Mechanical seal	Silicon carbide
Elastomers	VITON
Lubrication	grease



Motor

Supply	electric
Type	three-phase TEFC
No. poles	4
Tension supply	400-690 V
Frequency	50 Hz
Rated power	7,5 kW - 10 HP
Rated speed	1.450 rpm
Rated current, In (400V)	14,4 A
Class efficiency	IE3 - IEC 60034-30
Max efficiency	90,4 %
Protection rating	IP55
Insulation class	F
Thermal protection	No. 3 PTC thermistor
Rpm type	fixed
Service type	continuous - S1



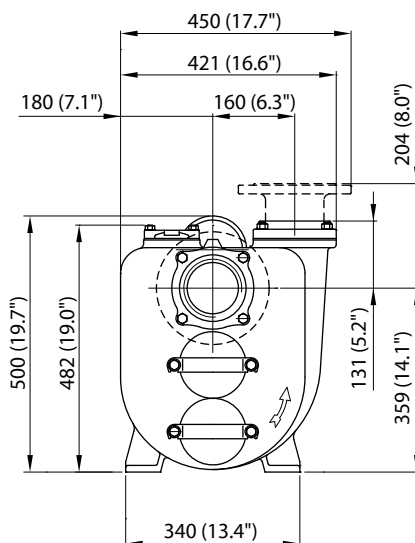
JE 4-250 P10 FT40



Arrangement

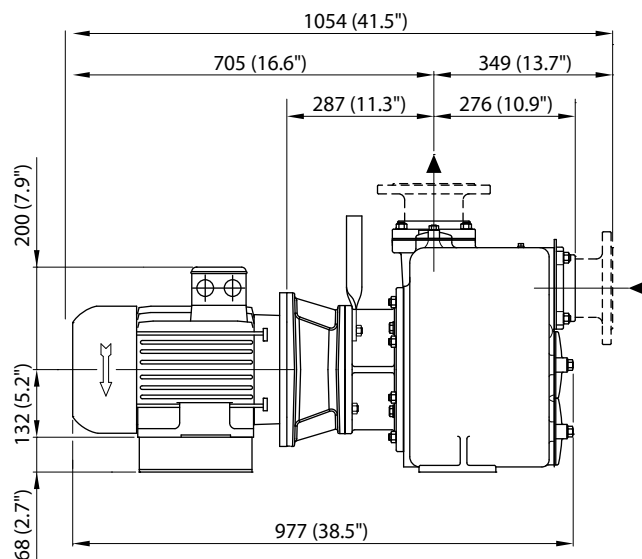
Model	close-coupling F
Dimensions	421 x 981 x 490 mm (17 x 39 x 19 ")
Material	cast iron
Coatings	bicomponent, average thickness of 80 µm
Color	RAL 1018 yellow (standard)
Features	close-coupling with rigid coupling; steel lifting bar
Lifting points	central barycentric connection
Height connection	0,4 m (1.2 ft)

Dimensions



Weight

Dry weight 218 kg (480 lb)



EN ISO 9001:2008 REG. NO 44 100 091767



Varisco S.p.A. has certified its Quality Management System in accordance with the requirements of the ISO 9001:2008 international standards. The quality of the product comes from the quality of the processes: standardise activities, enhance human resources, pursue a logic of continuous improvement aiming for the constant satisfaction of its Customers.

Varisco S.p.A. Terza strada, 9 - Z.I. Nord 35129 PADOVA - Italy
tel +39 049 8294 111 fax +39 049 80 76 762
export@variscospa.com