

**CLARKE**  
*Fire Protection Products*  
**PARTS ILLUSTRATIONS**

**DOOSAN SERIES (1470-2100 RPM):**

**MODEL ENGINES  
FOR  
FIRE PUMP APPLICATIONS**

**DQ6H-UFAA48, DQ6H-UFAA4G  
DQ6H-UFAA50, DQ6H-UFAA60  
DQ6H-UFAA88, DQ6H-UFAA98**

**PRODUCTION DATE: JUNE 1, 2011**

UF=UNDERWRITERS LABORATORIES/FACTORY MUTUAL CERTIFIED

Replacement "CLARKE PARTS" can be ordered through the Factory.  
When ordering provide the following:

A. Model No.: \_\_\_\_\_ B. Unit S/N: \_\_\_\_\_

C. Manufacturing Date: \_\_\_\_\_ D. Component P/N: \_\_\_\_\_

**Clarke UK, Ltd.  
Unit 1, Grange Works,  
Lomond Road  
Coatbridge  
ML5 2NN  
United Kingdom**

**Clarke Fire Protection Products, Inc.  
3133 E. Kemper Road  
Cincinnati, Ohio 45241  
U.S.A.**

**TEL: +44 (0) 1236 429 946  
FAX: +44 (0) 1236 427 274**

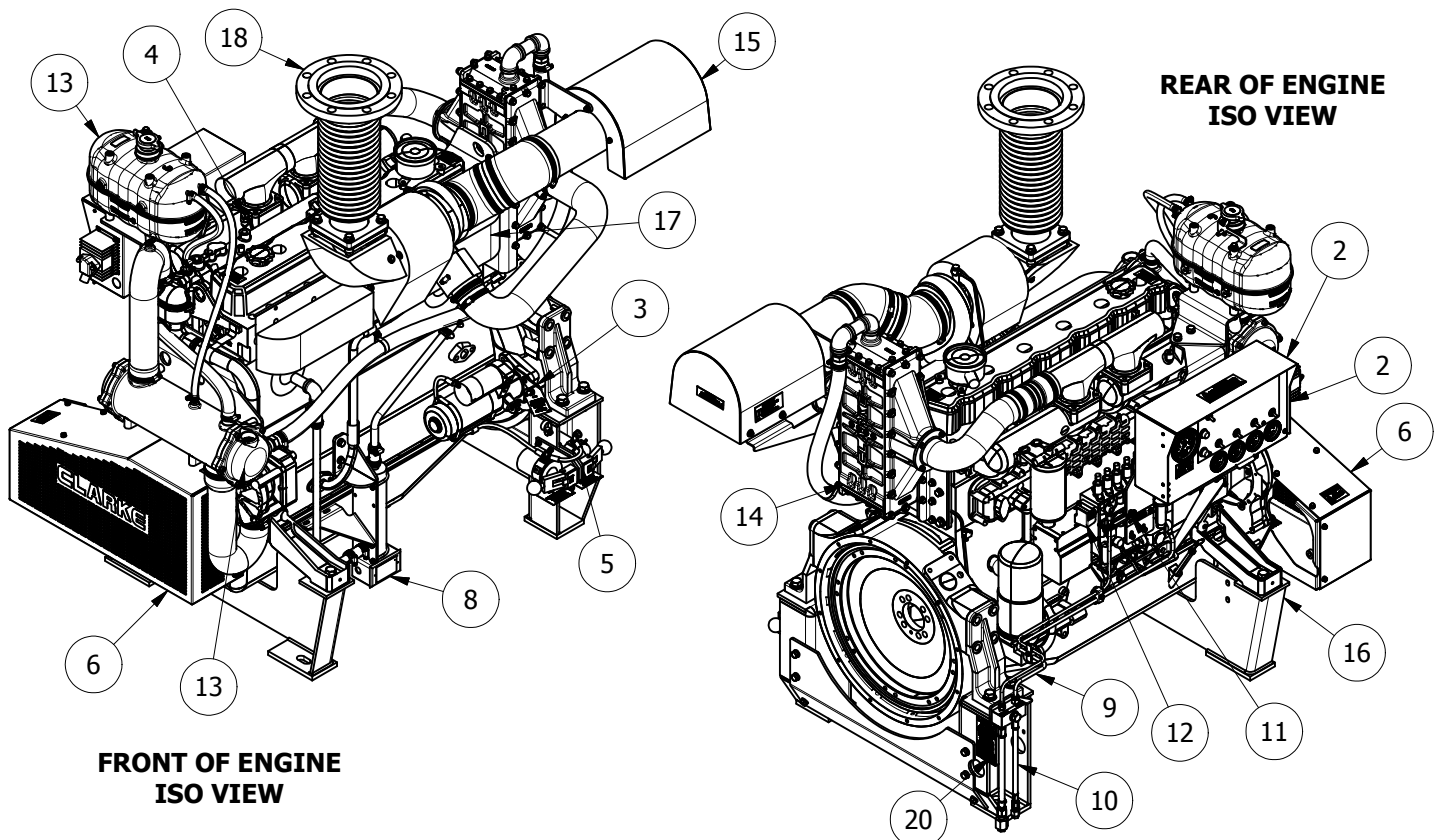
**TEL: +513 771 2200 Ext. 427  
FAX: +513 771 5375**

**STANDARD BUILD**

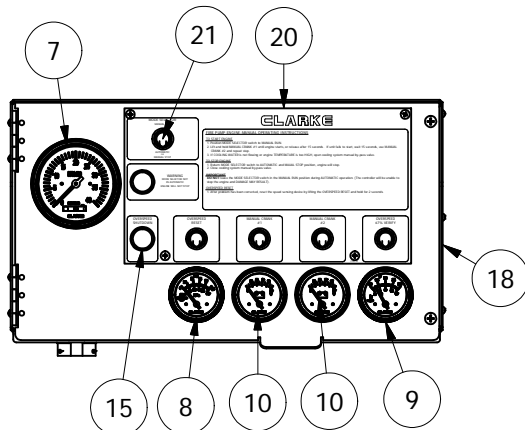
ITEM	CLARKE OPTION (REF.)	DESCRIPTION	PAGE NUMBER
1	C071904	ASSEMBLY, FOP INSTRUMENT PANEL: MECAB - ETS	3
2	071086	INSTRUMENT PANEL ASSEMBLY	4
3	076037	HARNESS	5
4	074015	SWITCHES	6
5	075053	STARTER CONTACTS	7
6	011026	BELT GUARD ASSEMBLY	8
7	078039	BELT (NOT SHOWN - LOCATED INSIDE 011026- BELT GUARD)	9
8	120043 (115V)	JACKET WATER HEATER SYSTEM (NOT SHOWN)	10
	120044 (230V)	JACKET WATER HEATER SYSTEM (SHOWN)	10
9	020035	FUEL SYSTEM	11
10	022020	FLEX FUEL HOSES	12
11	021013	THROTTLE LINKAGE ASSEMBLY	13
12	025003	MANUAL SHUTDOWN LEVER	14
13	051048	COOLING SYSTEM - HEAT EXCHANGER	15
14	031030	CHARGE AIR COOLER (CAC)	16
15	030088	AIR CLEANER ASSEMBLY	17
16	110017	ENGINE MOUNTS	18
17	060044	EXHAUST BLANKETS	19
18	061060	EXHAUST FLEX CONNECTION	20
19	130021	LABELS (PLACED ALL OVER ENGINE BUILD)	21
20	131020	NAMEPLATE	22

**OPTIONS TO STANDARD BUILD (NOT SHOWN BELOW)**

ITEM	CLARKE OPTION (REF.)	DESCRIPTION	PAGE NUMBER
21	050138	COOLING LOOP SYSTEM (24V)	23
22	050173	COOLING LOOP SYSTEM (VERTICAL)	24
23	080149	LISTED DRIVESHAFT ASSEMBLY W/ GUARD, CDS50-SC	28
24	080147	NON-LISTED DRIVESHAFT ASSEMBLY W/ GUARD, SC81A	29

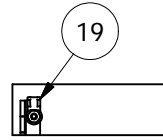


# ASSEMBLY, FOP INSTRUMENT PANEL (24V): MECAB - ETS ALL DT2H, DS0H, DR8H, DP6H, & DQ6H ENGINES

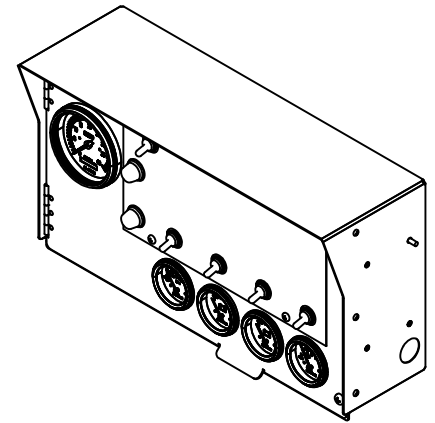
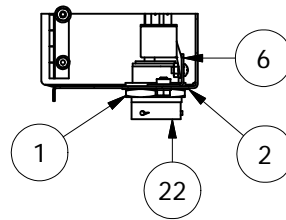


**INSTRUMENT PANEL BOX:  
SHOWN**

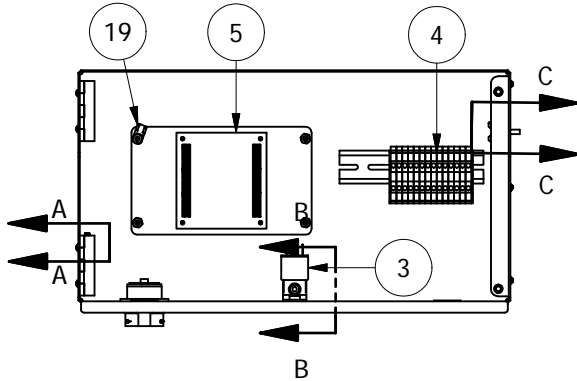
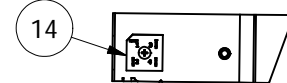
**SECTION A-A**



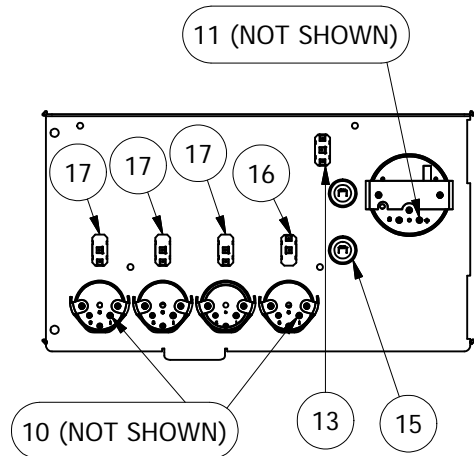
**SECTION B-B**



**SECTION C-C**



**DOOR OMITTED: INSTRUMENT  
PANEL BOX SHOWN**

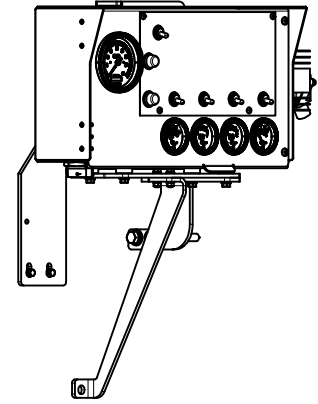
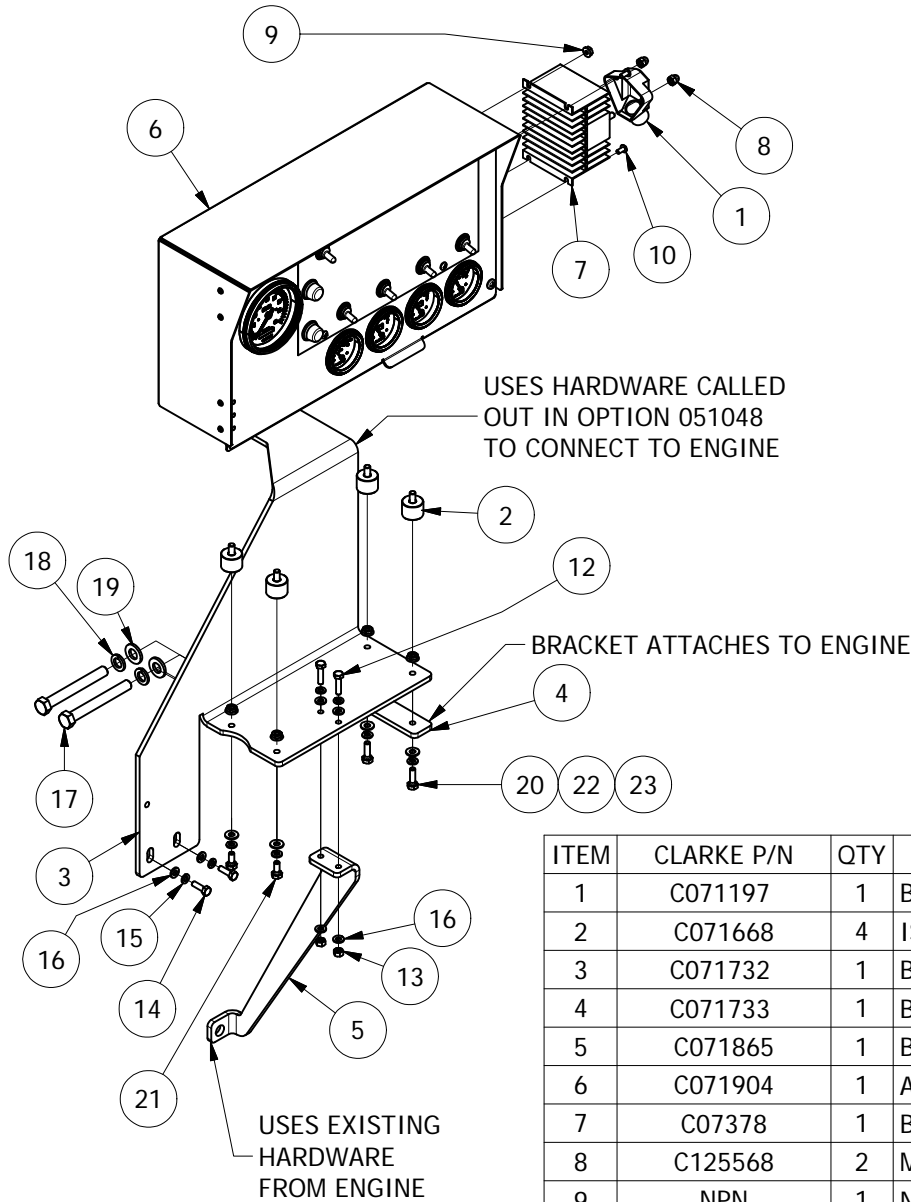


**INSTRUMENT PANEL BOX OMITTED:  
DOOR SHOWN**

ITEM	CLARKE P/N	QTY	DESCRIPTION
1	2411-001-2405	1	PLASTIC HEX NUT
2	2414-001-2486	1	LOCKWASHER
3	C071491	1	RELAY, 5 TERMINAL SPDT, 24V
4	C071508	1	ASSEMBLY, TERMINAL BLOCK
5	C071571	1	MECAB SPEEDSWITCH
6	C071810	1	BRKT, RELAY MTG - PLD MECAB
7	C071870	1	GAUGE, TACHOMETER
8	C071871	1	GAUGE, OIL PRESSURE
9	C071872	1	GAUGE, WATER TEMPERATURE
10	C071874	2	GAUGE, VOLTMETER (24V)
11	C071893	1	RESISTOR, VOLTAGE DROP - TACH
12	C071894	2	RESISTOR, VOLTAGE DROP - GAUGES
13	C07490	1	TOGGLE SWITCH, ON-ON, SPST
14	C07581	1	BATTERY BRIDGE
15	C07945	2	LAMP, PILOT, 24V
16	C07954	1	T. SWITCH, ON-MOM. OFF, SPST
17	C07955	3	T. SWITCH, OFF-MOM. ON, SPST
18	C10473	1	ASSEMBLY, INSTR. PANEL BOX
19	C126034	2	CABLE TIE MOUNT, 4 WAY SCREW
20	C126738	1	INSTRUCTION PLATE
21	C12881	5	BOOT, TOGGLE SWITCH
22	HDP24-24-18PN	1	CONNECTOR

**NPN = NO PART NUMBER**

# INSTRUMENT PANEL ASSEMBLY ALL DQ6H-UF MODELS

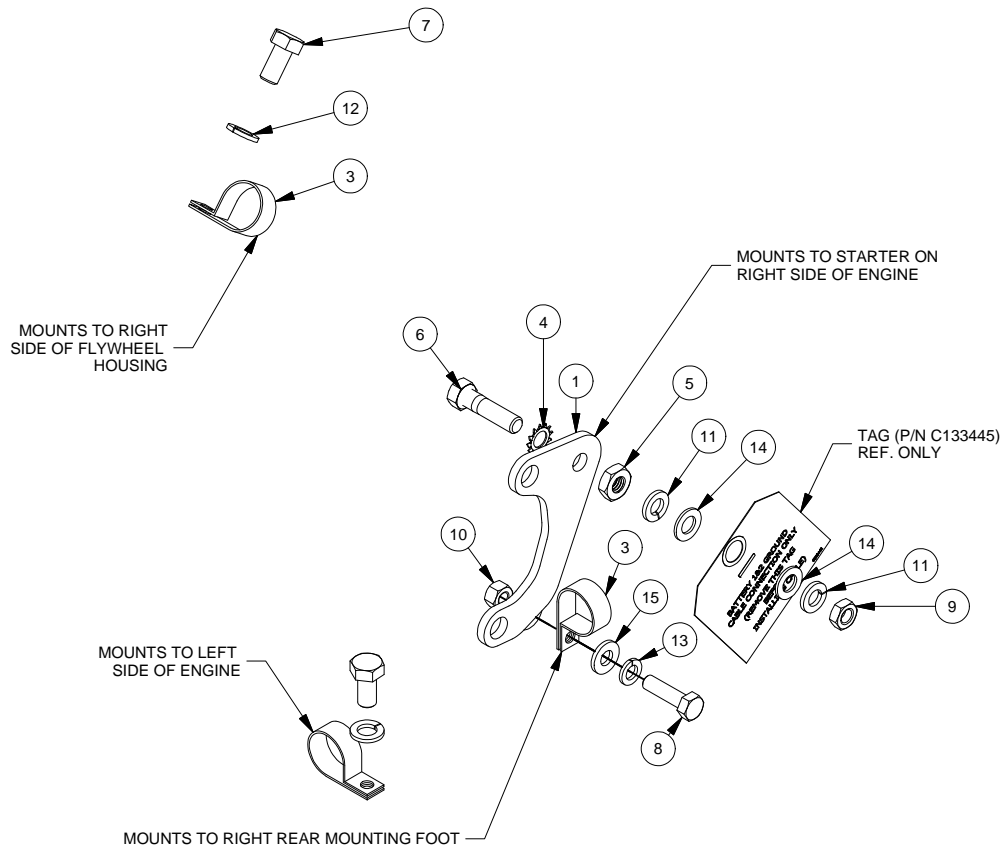


ITEM	CLARKE P/N	QTY	DESCRIPTION
1	C071197	1	BATTERY COVER
2	C071668	4	ISOLATOR, 3/4 X 1 - 1/4-20
3	C071732	1	BRACKET, INSTRUMENT PANEL
4	C071733	1	BRACE, INSTRUMENT PANEL
5	C071865	1	BRACE, LOWER INSTRUMENT PANEL
6	C071904	1	ASSY, INSTR. PANEL (24V): MECAB - ETS
7	C07378	1	BATTERY ISOLATOR
8	C125568	2	M6 ACORN NUT
9	NPN	1	NUT, FLANGED - #10-24 UNC
10	NPN	3	SCREW, MACHINE - #10-24 x 0.375
11	NPN	4	NUT, FLANGED - 1/4-20 UNC (NOT SHOWN)
12	NPN	2	BOLT, HEX HEAD - M6 x 1 x 25
13	NPN	2	NUT, HEX - M6 x 1
14	NPN	2	BOLT, HEX HEAD - M6 x 1 x 20
15	NPN	4	WASHER, LOCK - M6
16	NPN	6	WASHER, PLAIN -M6 X 13
17	NPN	2	BOLT, HEX HEAD - M12 x 1.75 x 100
18	NPN	2	WASHER, LOCK - M12
19	NPN	2	WASHER, PLAIN -M12 X 25.4
20	NPN	2	BOLT, HEX HEAD - 1/4-20 UNC x 0.875
21	NPN	2	BOLT, HEX HEAD - 1/4-20 UNC x 0.625
22	NPN	4	WASHER, LOCK - 1/4
23	NPN	4	WASHER, PLAIN - 0.25 X 0.625

**Clarke Reference**  
 Bill of Materials:  
 071086 (24V) - 11NOV11

**NPN = NO PART NUMBER**

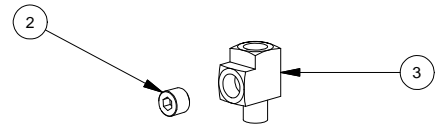
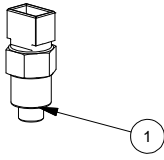
# HARNESS ALL DQ6H-UF ENGINES



ITEM	CLARKE P/N	QTY	DESCRIPTION
1	C071633	1	BRACKET, GROUND STUD
2	C071788	1	HARNESS, DQ6H MECAB WIRING (NOT SHOWN)
3	C12663	3	CLAMP, RUBBERIZED - 1 in. I.D.
4	C126995	1	WASHER, EXTERNAL TOOTH LOCK, 3/8, BRONZE
5	C126996	1	HEX NUT, 3/8-16, BRASS
6	C127043	1	BOLT, BRASS HEX HEAD - 3/8-16 UNC x 1.5
7	NPN	2	BOLT, HEX HEAD - M10 x 1.5 x 20
8	NPN	1	BOLT, HEX HEAD - M8 x 1.25 x 30
9	NPN	1	NUT, HEX - 3/8 - 16
10	NPN	1	NUT, HEX - M8 x 1.25
11	NPN	2	WASHER, LOCK - 3/8
12	NPN	2	WASHER, LOCK - M10
13	NPN	1	WASHER, LOCK - M8
14	NPN	2	WASHER, PLAIN - 0.375 X 0.734
15	NPN	2	WASHER, PLAIN -M8 X 18.8

**NPN = NO PART NUMBER**

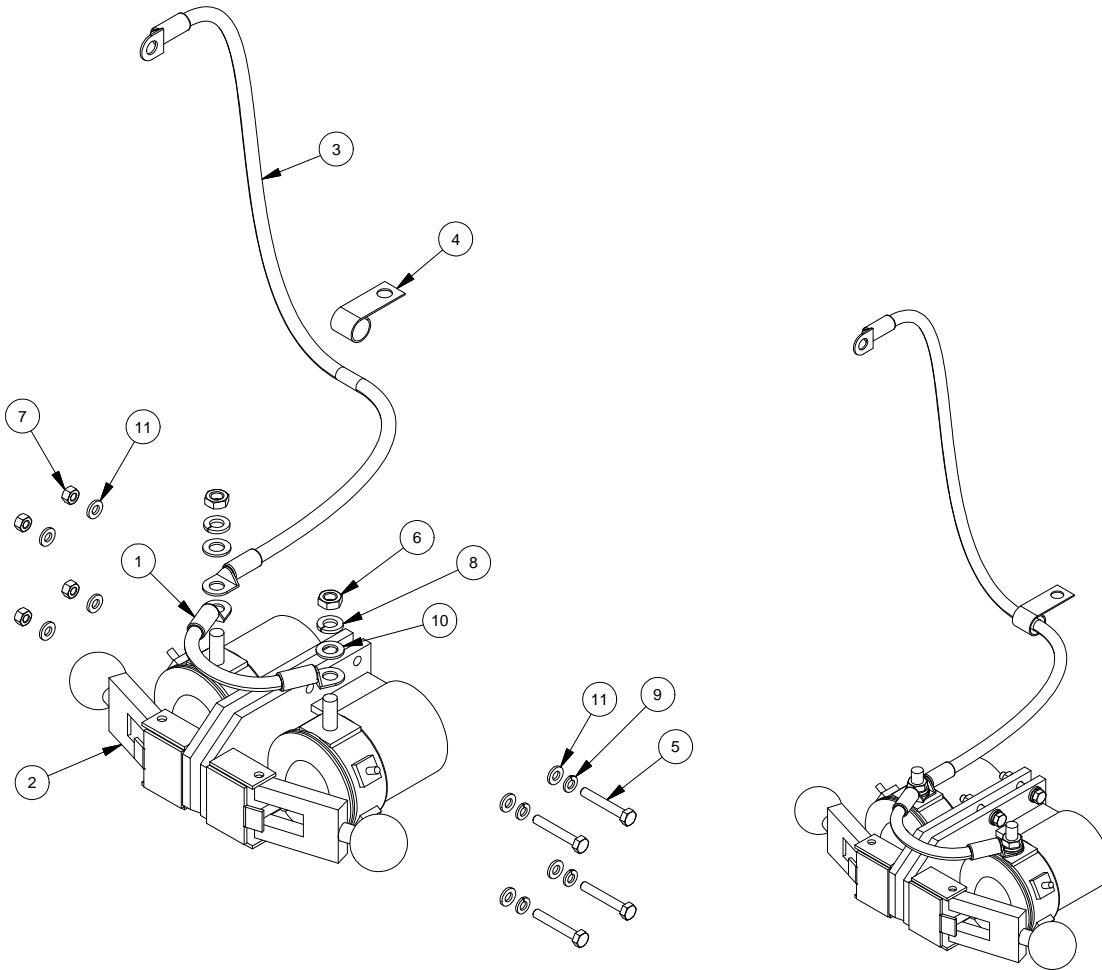
# SWITCHES ALL DQ6H-UF MODELS



ITEM	CLARKE P/N	QTY	DESCRIPTION
1	C051749	1	SENSOR (THERMISTOR), COOLANT TEMPERATURE
2	C12495	1	PLUG, HEX HEAD PIPE -1/8 NPT
3	C12521	1	TEE, BRASS STREET- 1/8 NPT

NPN = NO PART NUMBER

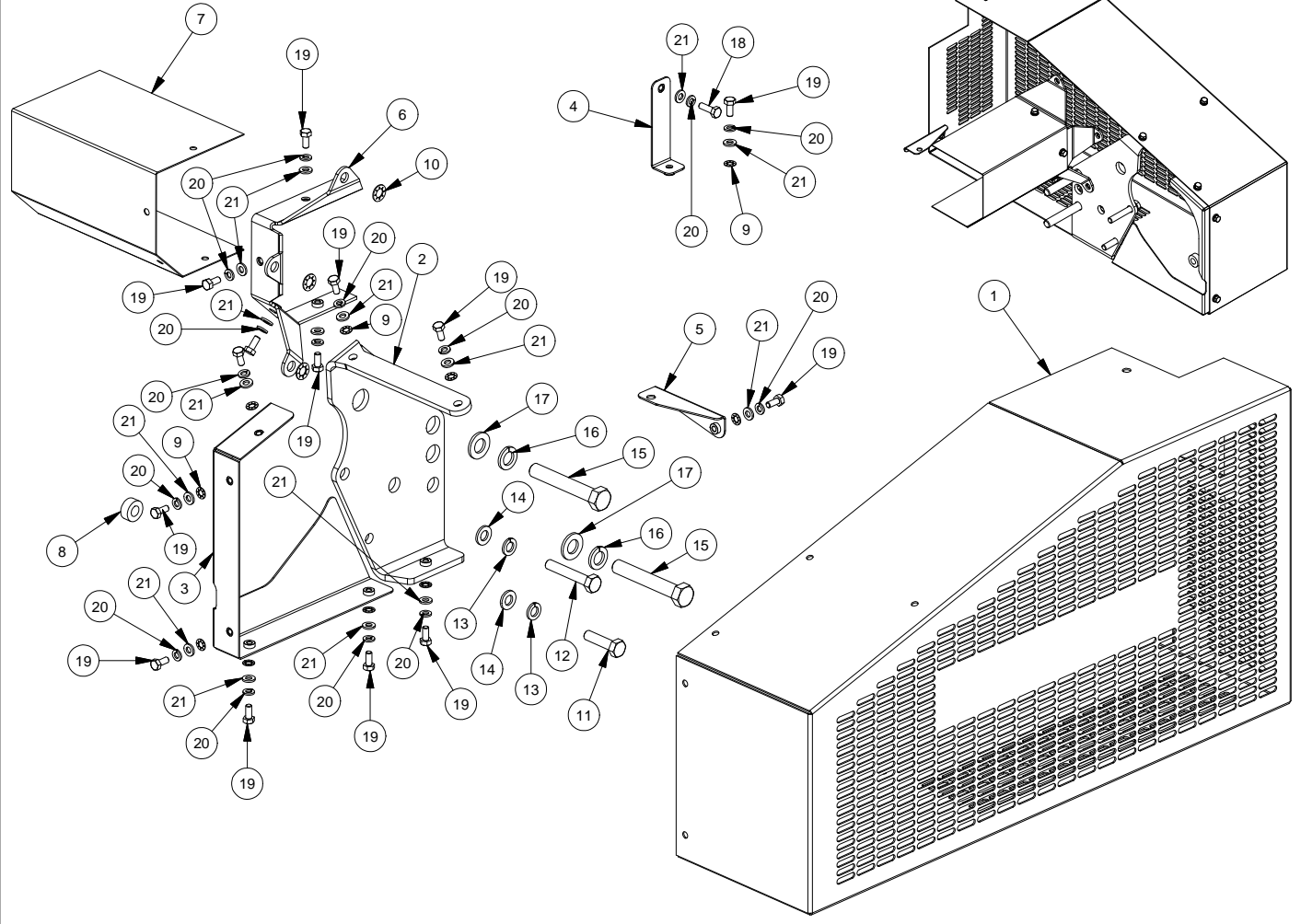
## STARTER CONTACTS ALL DQ6H-UF MODELS



ITEM	CLARKE P/N	QTY	DESCRIPTION
1	C07060	1	CABLE, POSITIVE
2	C071062	2	BATTERY CONTACTOR, 24V
3	C071837	1	CABLE, POSITIVE
4	C121547	1	J CLIP, 5/8" DIAMETER
5	NPN	4	BOLT, HEX HEAD - M6 x 1 x 40
6	NPN	2	NUT, HEX - 3/8 - 16
7	NPN	4	NUT, HEX - M6 x 1
8	NPN	2	WASHER, LOCK - 3/8
9	NPN	4	WASHER, LOCK - M6
10	NPN	2	WASHER, PLAIN - 0.375 X 0.734
11	NPN	8	WASHER, PLAIN -M6 X 13

NPN = NO PART NUMBER

## BELT GUARD ASSEMBLY ALL DQ6H-UF MODELS



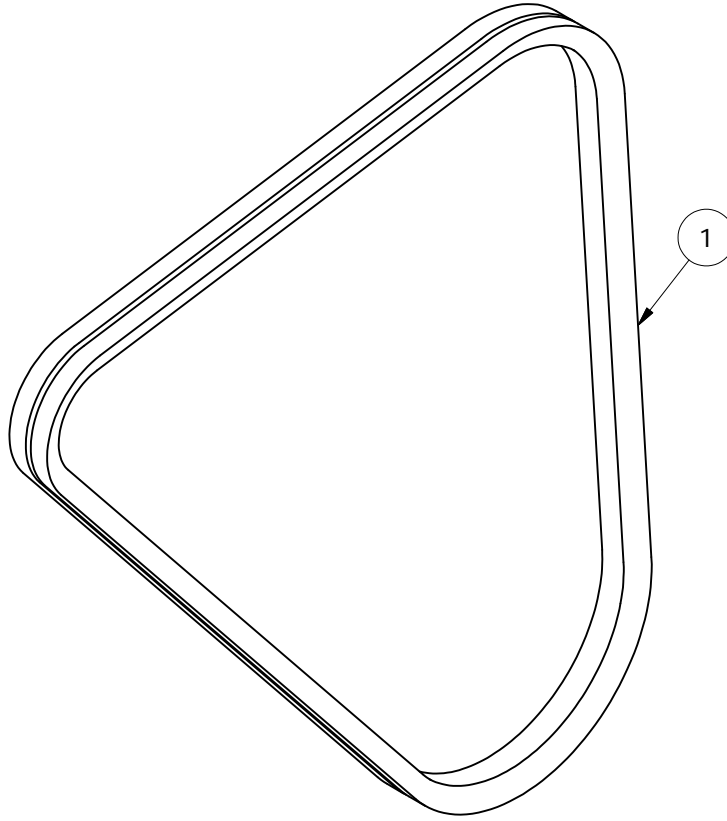
ITEM	CLARKE P/N	QTY	DESCRIPTION
1	C101056	1	GUARD, BELT - WITH ALTERNATOR
2	C101057	1	BRACKET, BELT GUARD & ALTERNATOR TENSIONER
3	C101058	1	GUARD, BELT - REAR COVER
4	C101060	1	BRACKET, GUARD - TOP RIGHT BELT GUARD
5	C101061	1	BRACKET, MOUNTING - RIGHT SIDE BELT GUARD
6	C101064	1	BRACKET, PUMP SHAFT GUARD
7	C101065	1	GUARD, PUMP SHAFT
8	C123970	1	SPACER
9	C126772	10	WASHER, 1/4" METAL RETAINING
10	C126780	3	WASHER, 3/8" PLASTIC RETAINING
11	NPN	1	BOLT, HEX HEAD - M10 x 1.5 x 40
12	NPN	1	BOLT, HEX HEAD - M10 x 1.5 x 60
13	NPN	2	WASHER, LOCK - M10
14	NPN	2	WASHER, PLAIN -M10 X 20
15	NPN	2	BOLT, HEX HEAD - M14 x 1.5 x 90
16	NPN	2	WASHER, LOCK - M14
17	NPN	2	WASHER, PLAIN -M14 X 28
18	NPN	1	BOLT, HEX HEAD - M6 x 1 x 20
19	NPN	14	BOLT, HEX HEAD - M6 x 1 x 14
20	NPN	15	WASHER, LOCK - M6
21	NPN	15	WASHER, PLAIN -M6 X 13

**Clarke Reference**  
 Bill of Materials:  
 011026 - 14NOV11

NPN = NO PART NUMBER

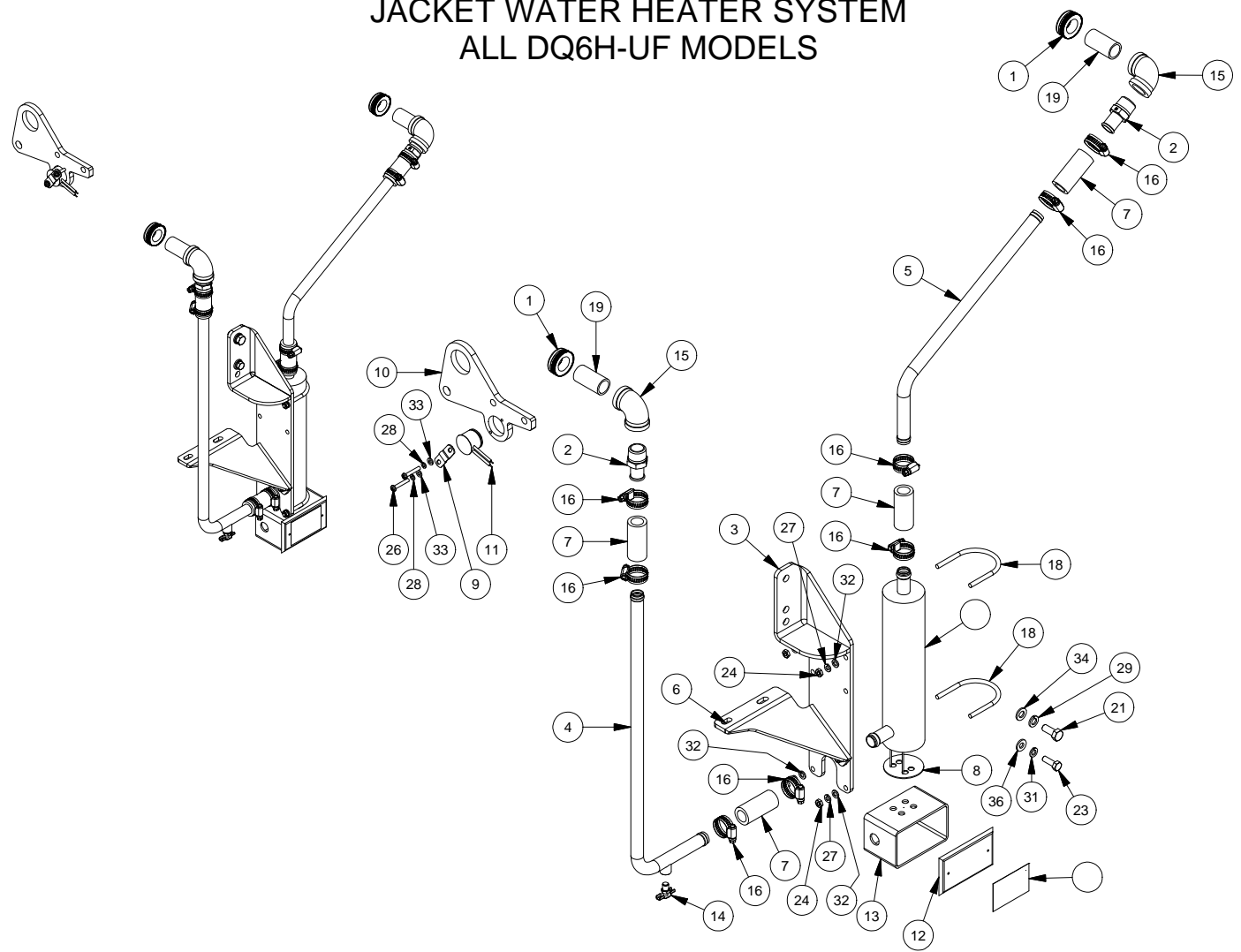


BELTS  
ALL DQ6H-UF MODELS



ITEM	CLARKE P/N	QTY	DESCRIPTION
1	C071786	1	BELT, ALTERNATOR

# JACKET WATER HEATER SYSTEM ALL DQ6H-UF MODELS



ITEM	MFR. P/N	QTY	DESCRIPTION	ITEM	MFR. P/N	QTY	DESCRIPTION
1	C051500	2	PLUG, CYLINDER BLOCK ADAPTOR	19	C12268	2	NIPPLE, BLACK IRON PIPE - 3/4 NPT X 2 LG.
2	C05153	2	ADAPTOR - 3/4" HOSE BARB TO 3/4" NPT	20	C127279	1	LABEL, JACKET WATER HEATER (230V)
3	C051617	1	BRACKET, JACKET WATER HEATER		C127280	1	LABEL, JACKET WATER HEATER (115V)
4	C051656	1	TUBE, JACKET WATER HEATER INLET	21	NPN	1	BOLT, HEX HEAD - M10 x 1.5 x 25
5	C051657	1	TUBE, JACKET WATER HEATER OUTLET	22	NPN	2	BOLT, HEX HEAD - M6 x 1 x 25
6	C051737	1	BRACE, J.W. HEATER SUPPORT	23	NPN	1	BOLT, HEX HEAD - M8 x 1.25 x 25
7	C05410	4	HOSE, SILICONE - 0.75 in I.D. X 2.5 LG.	24	NPN	4	NUT, HEX - 1/4 - 20
8	C05626	1	GASKET, NEOPRENE	25	NPN	2	NUT, HEX - M6 x 1
9	C071032	1	CLAMP, MOUNT THERMOSTAT TO ADAPTER	26	NPN	2	SCREW, MACHINE - M10x32 x 1
10	C071808	1	BRCKT, LIFTING - WITH INTEGRATED STAT MNT	27	NPN	4	WASHER, LOCK - 1/4
11	C07648	1	THERMOSTAT, 100 DEG. TO 120 DEG. F	28	NPN	2	WASHER, LOCK - 5mm
12	C07658	1	COVER, HEATER BOX	29	NPN	1	WASHER, LOCK - M10
13	C07744	1	BOX, HEATER - MODIFICATIONS	30	NPN	2	WASHER, LOCK - M6
14	C12152	1	DRAINCOCK - 1/8 NPT	31	NPN	1	WASHER, LOCK - M8
15	C12164	2	ELBOW, BLACK IRON 90 DEGREE PIPE -3/4 NPT	32	NPN	4	WASHER, PLAIN - 0.25 X 0.5
16	C121708	8	CLAMP, CONSTANT TORQUE HOSE	33	NPN	2	WASHER, PLAIN -5 X 11
17	C122189	1	HEATER, JACKET WATER - 2000 W, 115 VAC	34	NPN	1	WASHER, PLAIN -M10 X 20
	C122193	1	HEATER, JACKET WATER - 2000 W, 230 VAC	35	NPN	4	WASHER, PLAIN -M6 X 13
18	C122196	2	U-BOLT	36	NPN	1	WASHER, PLAIN -M8 X 18.8

NPN = NO PART NUMBER

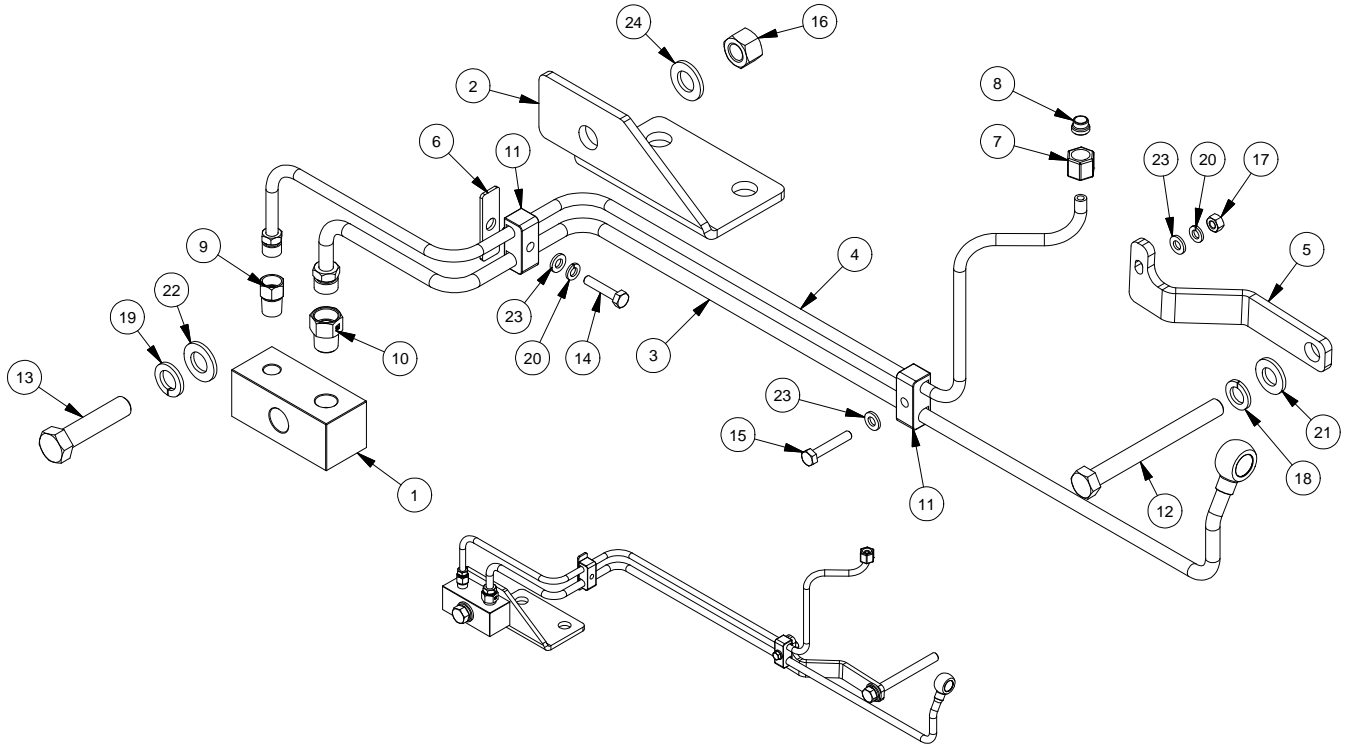
**Clarke Reference**

**Bill of Materials:**

120043 (115V) - 10NOV11

120044 (230V) - 10NOV11

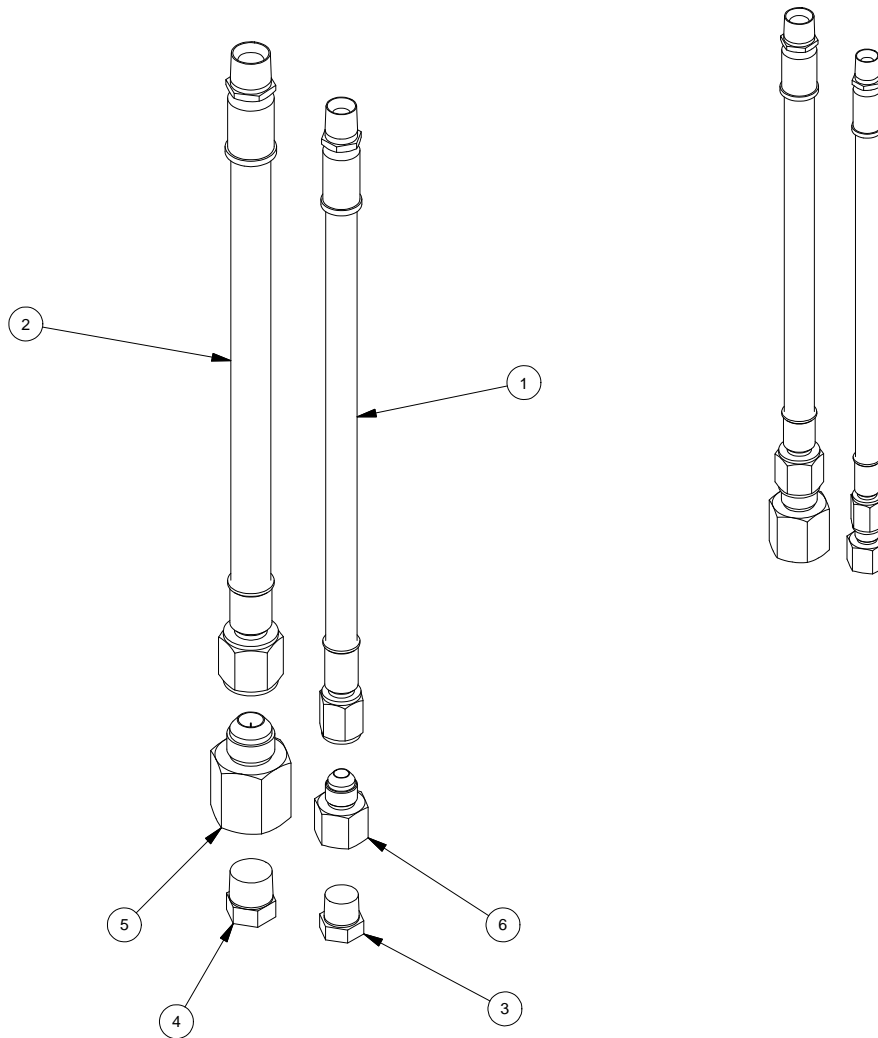
## FUEL SYSTEM ALL DQ6H-UF MODELS



ITEM	CLARKE P/N	QTY	DESCRIPTION
1	C02310	1	BLOCK, MANIFOLD
2	C02733	1	BRACKET, FUEL BLOCK MOUNTING
3	C02741	1	LINE, FUEL - SUPPLY
4	C02742	1	LINE, FUEL - RETURN
5	C02743	1	BRACKET, FUEL LINE SUPPORT
6	C02749	1	BRACKER, FUEL LINE SUPPORT
7	C02751	1	NUT, EO 24 DEGREE BITE TYPE - 8mm
8	C02752	1	RING, EO 24 DEGREE CUTTING - 8mm
9	C12696	1	ADAPTER, INVERTED BRASS FLARE - 5/16" TUBE X 1/4" NPT
10	C12699	1	MALE ADAPTOR, 3/8" TUBE x 3/8" MNPT
11	C127249	2	CLAMP, DOUBLE PIPE - 3/8" X 8mm
12	NPN	1	BOLT, HEX HEAD - M12 x 1.5 x 120
13	NPN	1	BOLT, HEX HEAD - M14 x 2 x 60
14	NPN	1	BOLT, HEX HEAD - M6 x 1 x 30
15	NPN	1	BOLT, HEX HEAD - M6 x 1 x 35
16	NPN	1	NUT, HEX - M14 x 2
17	NPN	1	NUT, HEX - M6 x 1
18	NPN	1	WASHER, LOCK - 12mm
19	NPN	1	WASHER, LOCK - 14mm
20	NPN	2	WASHER, LOCK - 6mm
21	NPN	1	WASHER, PLAIN -12 X 25.4
22	NPN	1	WASHER, PLAIN -14 X 28
23	NPN	3	WASHER, PLAIN -6 X 13
24	NPN	1	WASHER, PLAIN -M14 X 28

NPN = NO PART NUMBER

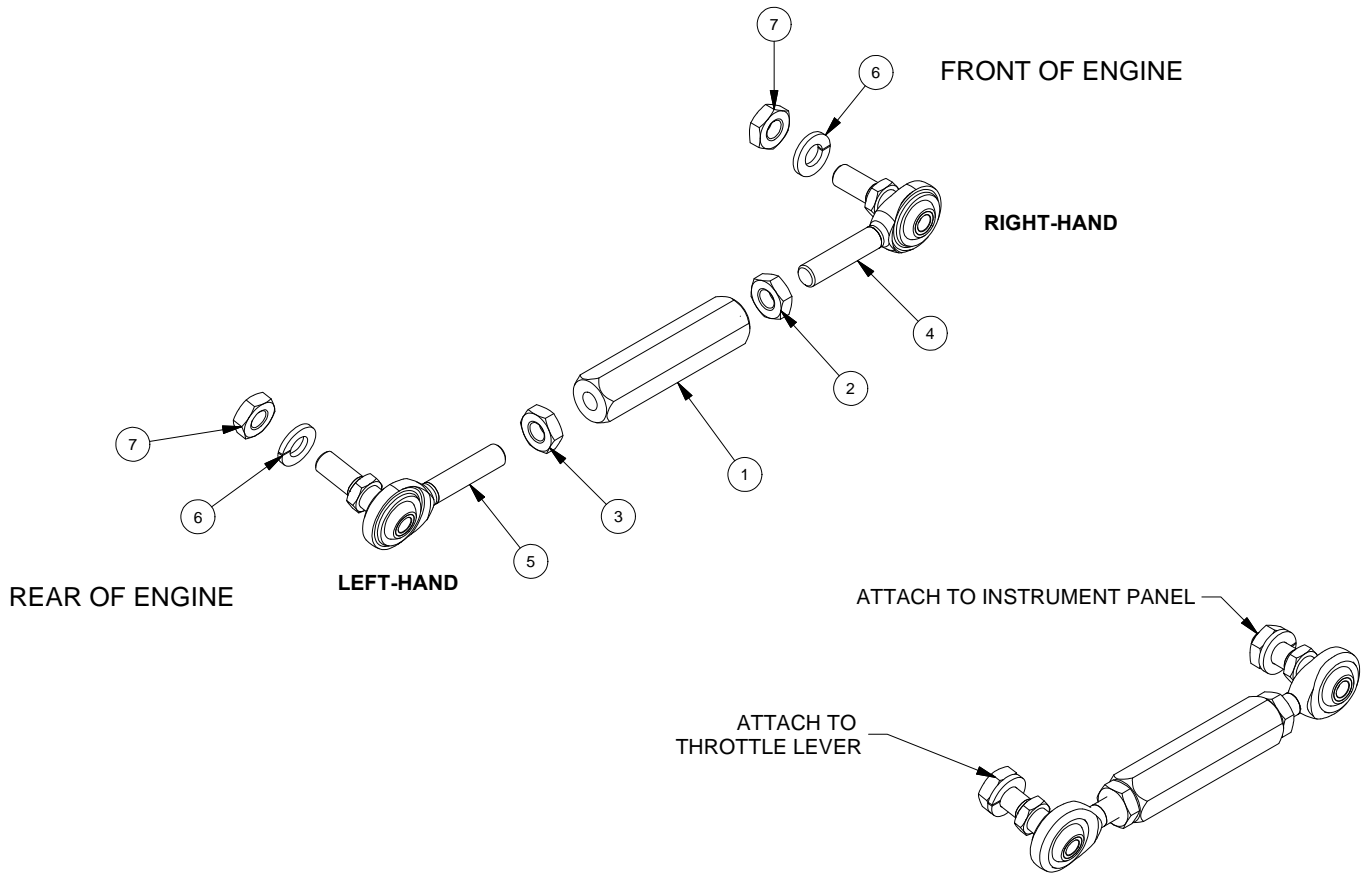
## FLEX FUEL HOSES ALL DQ6H-UF MODELS



ITEM	CLARKE P/N	QTY	DESCRIPTION
1	C02266	1	FUEL HOSE
2	C02267	1	FUEL HOSE
3	C125216	1	PLUG, CLASS 2000 PIPE - 1/4 NPT
4	C125217	1	PLUG, CLASS 2000 PIPE - 3/8 NPT
5	C125381	1	ADAPTOR, 37* FLARE to NPTF
6	C125649	1	ADAPTOR, 37* FLARE to FEMALE NPT

**NPN = NO PART NUMBER**

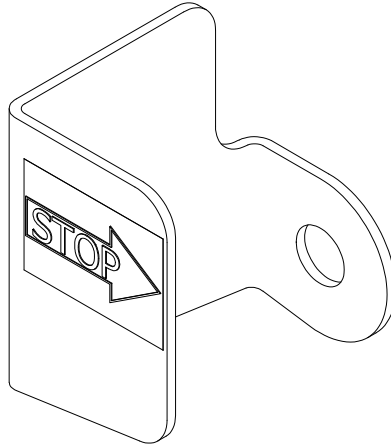
# THROTTLE LINKAGE ASSEMBLY ALL DQ6H-UF MODELS



ITEM	CLARKE P/N	QTY	DESCRIPTION
1	C02204	1	ADJUSTER, 1/2" HEX, ENGINE THROTTLE
2	C125027	1	HEX JAM NUT, 1/4-28 LH
3	C125034	1	HEX JAM NUT, 1/4-28 RH
4	C121644	1	ROD END, 1/4 28 RH
5	C121645	1	ROD END, 1/4-28 LH
6	NPN	2	WASHER, LOCK - 1/4
7	NPN	2	NUT, HEX - 1/4 - 28

NPN = NO PART NUMBER

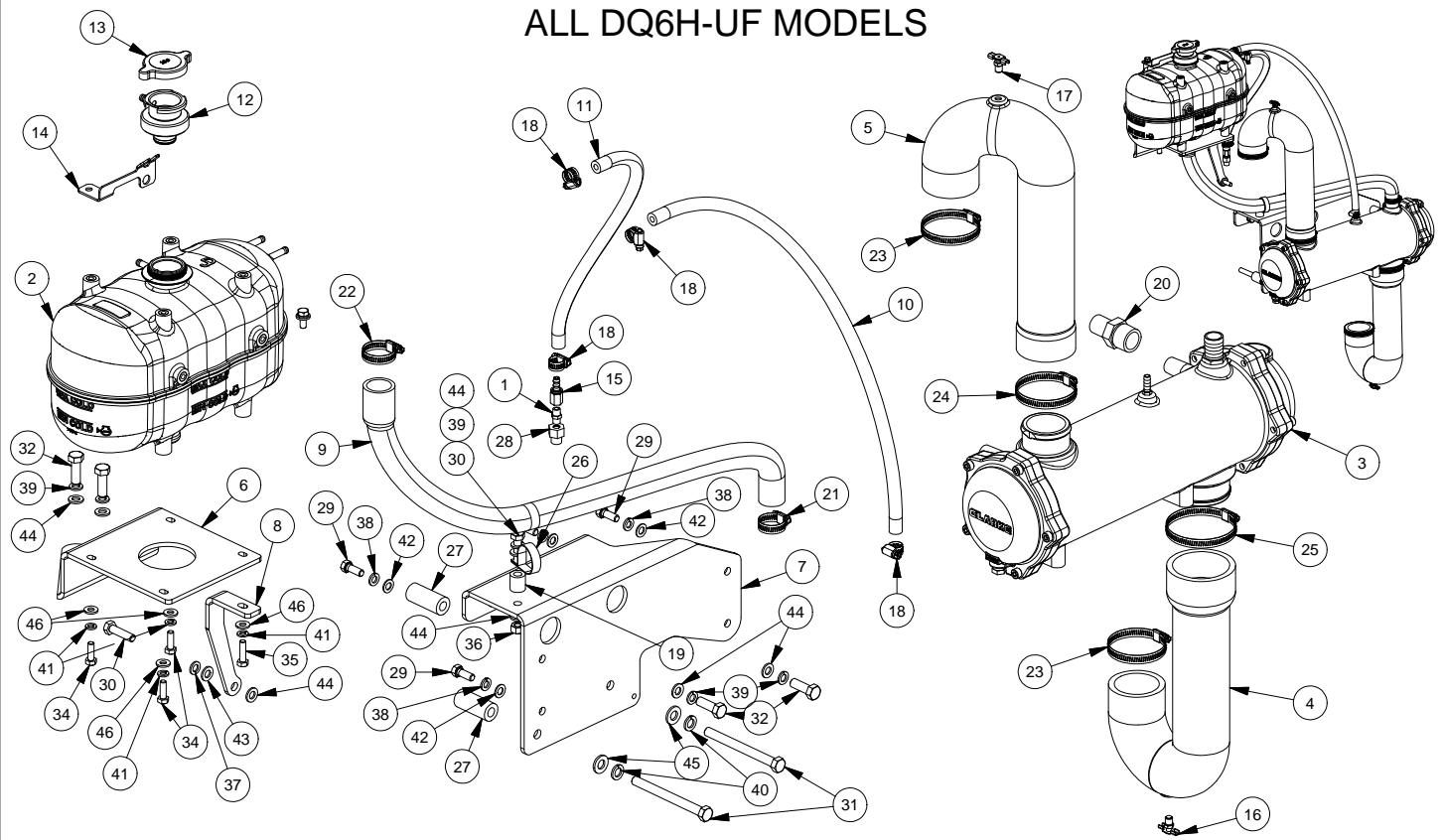
# MANUAL SHUTDOWN LEVER ALL DQ6H-UF MODELS



ITEM	CLARKE P/N	QTY	DESCRIPTION
1	C02734	1	LEVER, MANUAL STOP
2	C127278	1	LABEL, MANUAL STOP LEVER - DP6H & DQ6H

NPN = NO PART NUMBER

# COOLING SYSTEM - HEAT EXCHANGER ALL DQ6H-UF MODELS

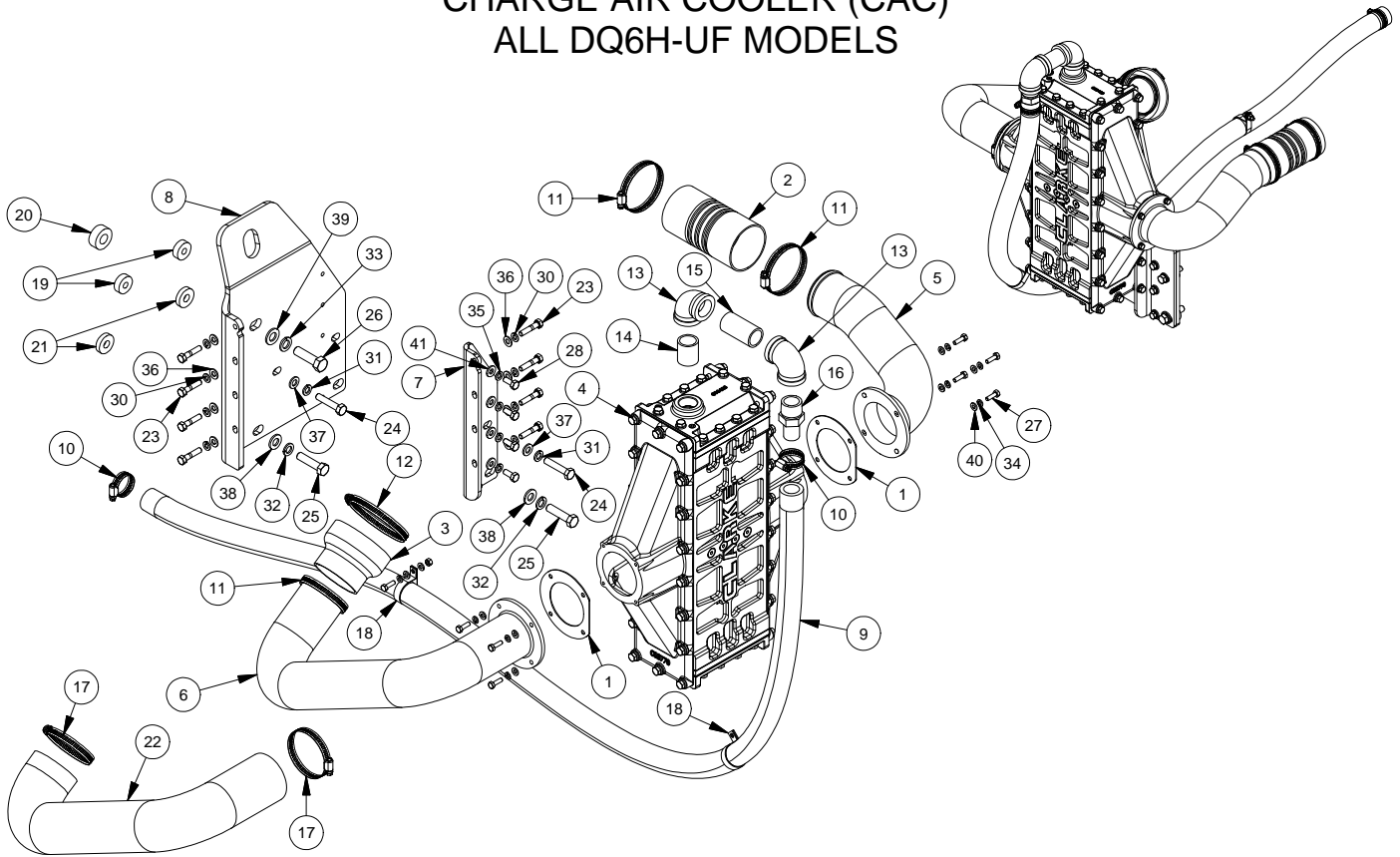


ITEM	CLARKE P/N	QTY	DESCRIPTION	ITEM	CLARKE P/N	QTY	DESCRIPTION
1	C02483	1	ADAPTER, ORIFICE - SAE 45 DEGREE FLARE X 1/8" NPT	26	C12666	1	CLAMP, RUBBERIZED - 1.5 in. I.D.
2	C051432	1	TANK, LARGE EXPANSION	27	C127181	2	SPACER, M13 X 2.25" LG
3	C051529	1	ASSEMBLY, HEAT EXCHANGER	28	C127421	1	ADAPTOR, PIPE TO METRIC - 1/8-27 X M14-1.5
4	C051644	1	HOSE, WATER PUMP TO H. EXCHANGER	29	NPN	4	BOLT, HEX HEAD - 3/8-16 UNC x 1
5	C051645	1	HOSE, THERMOSTAT TO H. EXCHANGER	30	NPN	2	BOLT, HEX HEAD - M10 x 1.5 x 40
6	C051646	1	BRACKET, EXPANSION TANK	31	NPN	2	BOLT, HEX HEAD - M12 x 1.5 x 130
7	C051649	1	BRACKET, HEAT EXCHANGER MOUNTING	32	NPN	4	BOLT, HEX HEAD - M12 x 1.75 x 35
8	C051658	1	BRACE, EXPANSION TANK	33	NPN	1	BOLT, HEX HEAD - M8 x 1.25 x 20
9	C051702	1	HOSE, EXPANSION TANK FILL	34	NPN	3	BOLT, HEX HEAD - M8 x 1.25 x 25
10	C051722	1	HOSE, VENT - 5/16" I.D.	35	NPN	1	BOLT, HEX HEAD - M8 x 1.25 x 30
11	C051723	1	HOSE, VENT - 5/16" I.D.	36	NPN	1	NUT, HEX - M10 x 1.5
12	C051731	1	ADAPTER, EXPANSION TANK	37	NPN	1	WASHER, LOCK - 10mm
13	C051740	1	CAP, 10# RADIATOR	38	NPN	4	WASHER, LOCK - 3/8
14	C051742	1	BRCKT, ANTI-ROTATION EXPANSION TANK	39	NPN	5	WASHER, LOCK - M10
15	C121142	1	FITTING, #4 PUSH LOCK TO #4 FLARE	40	NPN	2	WASHER, LOCK - M12
16	C12152	1	DRAINCOCK - 1/8 NPT	41	NPN	5	WASHER, LOCK - M8
17	C12152	1	DRAINCOCK, BRASS - 1/8 NPT	42	NPN	4	WASHER, PLAIN - 0.375 X 0.734
18	C121707	4	CLAMP, CONSTANT TORQUE HOSE	43	NPN	1	WASHER, PLAIN -10 X 20
19	C122054	1	SPACER	44	NPN	7	WASHER, PLAIN -M10 X 20
20	C123432	1	ADAPTER, HOSE - 1" NPT X 1" HOSE	45	NPN	2	WASHER, PLAIN -M12 X 25.4
21	C12643	1	CLAMP, HOSE	46	NPN	5	WASHER, PLAIN -M8 X 18.8
22	C12644	1	CLAMP, HOSE				
23	C12646	2	CLAMP, HOSE				
24	C12647	1	CLAMP, HOSE				
25	C12648	1	CLAMP, HOSE				

**Clarke Reference**  
 Bill of Materials:  
 051048 - 11NOV11

NPN = NO PART NUMBER

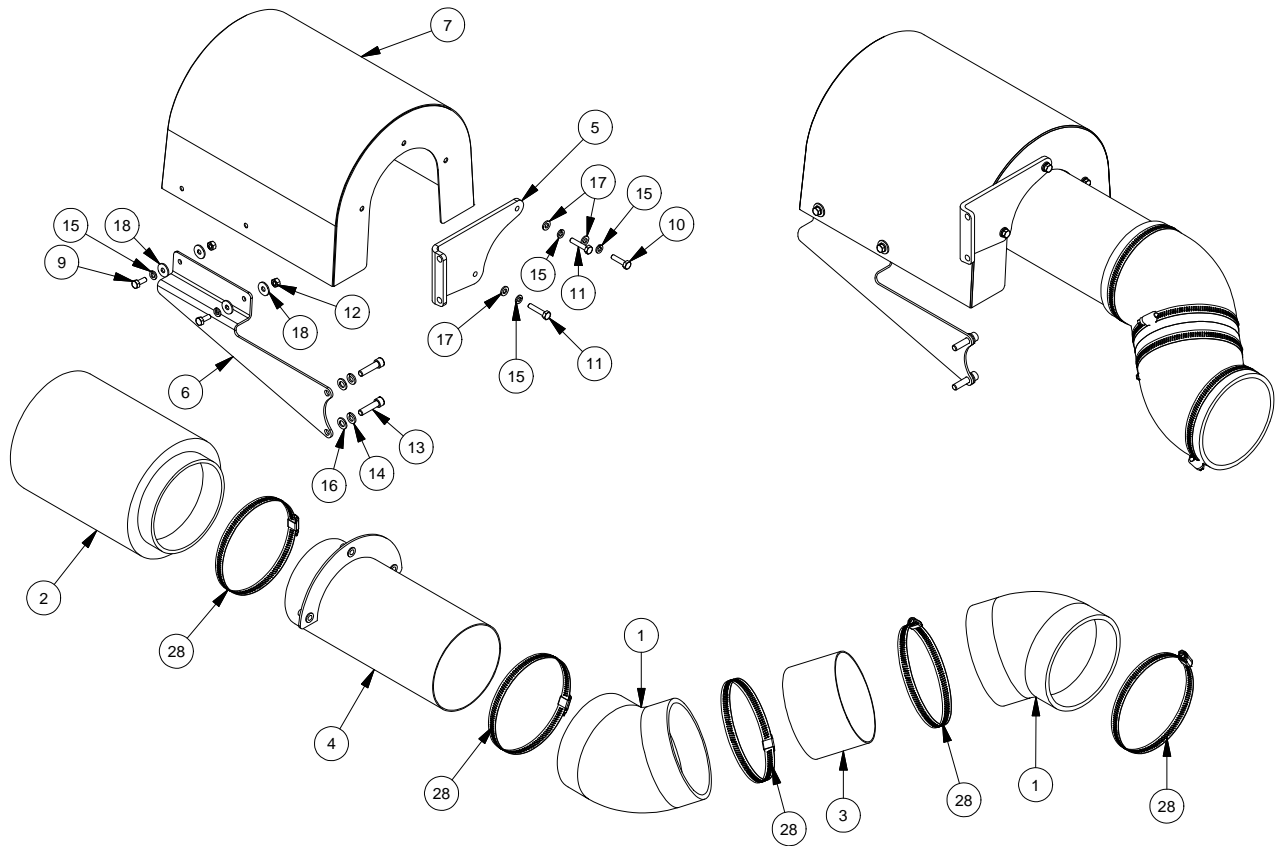
## CHARGE AIR COOLER (CAC) ALL DQ6H-UF MODELS



ITEM	MFR. P/N	QTY	DESCRIPTION	ITEM	MFR. P/N	QTY	DESCRIPTION
1	C03635	2	GASKET, AIR INLET, CAC	21	C127277	2	SPACER
2	C03659	1	HOSE, CAC, 6" LONG	22	C127310	1	SLEEVE, HIGH TEMPERATURE FIBERGLASS
3	C03744	1	HOSE,SILICONE TURBO OUTLET REDUCER 3" ID X 4" ID	23	NPN	9	BOLT, HEX HEAD - 5/16-18 UNC x 1.5
4	C03775	1	COOLER, CHARGE AIR - SINGLE PASS	24	NPN	1	BOLT, HEX HEAD - M10 x 1.5 x 50
5	C03776	1	TUBE, CAC TO INTAKE MANIFOLD	25	NPN	1	BOLT, HEX HEAD - M12 x 1.5 x 50
6	C03777	1	TUBE, TURBO TO CAC	26	NPN	1	BOLT, HEX HEAD - M14 x 1.5 x 50
7	C03778	1	BRACKET, CAC MOUNTING - LEFT	27	NPN	9	BOLT, HEX HEAD - M6 x 1 x 20
8	C03779	1	BRACKET, CAC MOUNTING - RIGHT	28	NPN	5	BOLT, HEX HEAD - M8 x 1.25 x 20
9	C051768	1	HOSE, CUT TO LENGTH	29	NPN	1	NUT, HEX - M6 x 1
10	C121709	2	CLAMP, CONSTANT TORQUE HOSE	30	NPN	9	WASHER, LOCK - 5/16
11	C121715	3	CLAMP, CONSTANT TORQUE HOSE	31	NPN	2	WASHER, LOCK - M10
12	C121717	1	CLAMP, CONSTANT TORQUE HOSE	32	NPN	2	WASHER, LOCK - M12
13	C121843	2	ELBOW, GALVANIZED 90 DEGREE PIPE -1 NPT	33	NPN	1	WASHER, LOCK - M14
14	C122098	1	NIPPLE, GALVANIZED STEEL PIPE - 1 NPT CLOSE	34	NPN	9	WASHER, LOCK - M6
15	C122101	1	NIPPLE, GALVANIZED STEEL PIPE - 1 NPT X 2.5 LG.	35	NPN	5	WASHER, LOCK - M8
16	C123432	1	ADAPTER, HOSE - 1" NPT X 1" HOSE	36	NPN	8	WASHER, PLAIN - 0.3125 X 0.688
17	C12647	2	CLAMP, HOSE	37	NPN	2	WASHER, PLAIN -M10 X 20
18	C12666	2	CLAMP, RUBBERIZED - 1.5 in. I.D.	38	NPN	2	WASHER, PLAIN -M12 X 25.4
19	C127275	2	SPACER	39	NPN	1	WASHER, PLAIN -M14 X 28
20	C127276	1	SPACER	40	NPN	10	WASHER, PLAIN -M6 X 13
				41	NPN	5	WASHER, PLAIN -M8 X 18.8



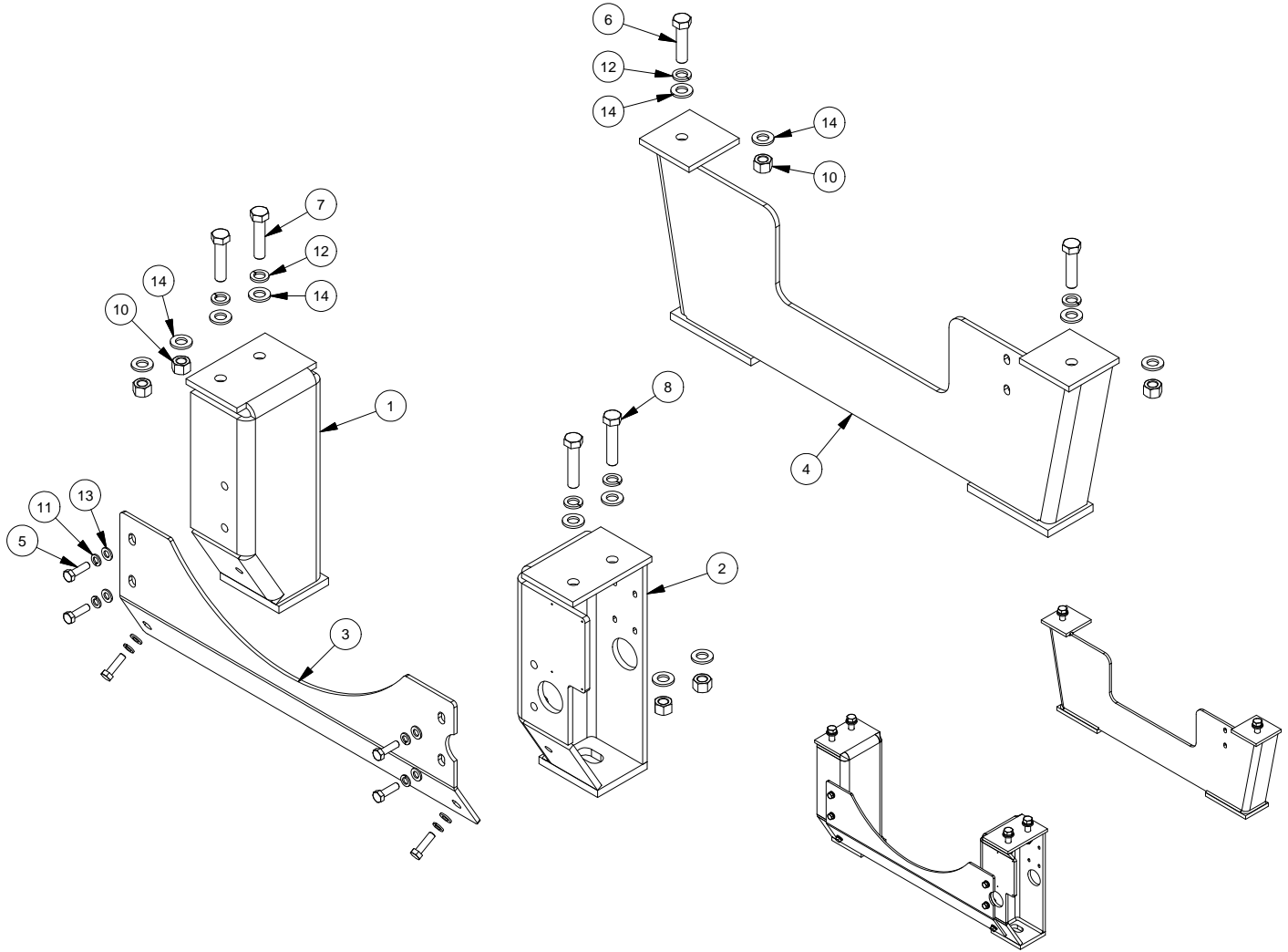
# AIR CLEANER ASSEMBLY ALL DQ6H-UF MODELS



ITEM	CLARKE P/N	QTY	DESCRIPTION
1	C03091	2	ELBOW, RUBBER 45-DEGREE - 5"ID
2	C03244	1	FILTER, AIR
3	C03250	1	TUBE, AIR INLET
4	C03739	1	TUBE, AIR INLET
5	C03782	1	BRACKET, DRIP SHIELD SUPPORT
6	C03819	1	SUPPORT, DRIP SHIELD
7	C03820	1	DRIP SHIELD, 5"
9	NPN	2	BOLT, HEX HEAD - M6 x 1 x 16
10	NPN	1	BOLT, HEX HEAD - M6 x 1 x 25
11	NPN	2	BOLT, HEX HEAD - M6 x 1 x 30
12	NPN	2	NUT, HEX - M6 x 1
13	NPN	2	SCREW, SOCKET HEAD CAP - 5/16-18 UNC-18 X 1.25
14	NPN	2	WASHER, LOCK - 5/16
15	NPN	5	WASHER, LOCK - M6
16	NPN	2	WASHER, PLAIN - 0.3125 X 0.625
17	NPN	3	WASHER, PLAIN -M6 X 13
18	NPN	4	WASHER, PLAIN -M6 X 18.8
28	C12651	5	CLAMP, HOSE

NPN = NO PART NUMBER

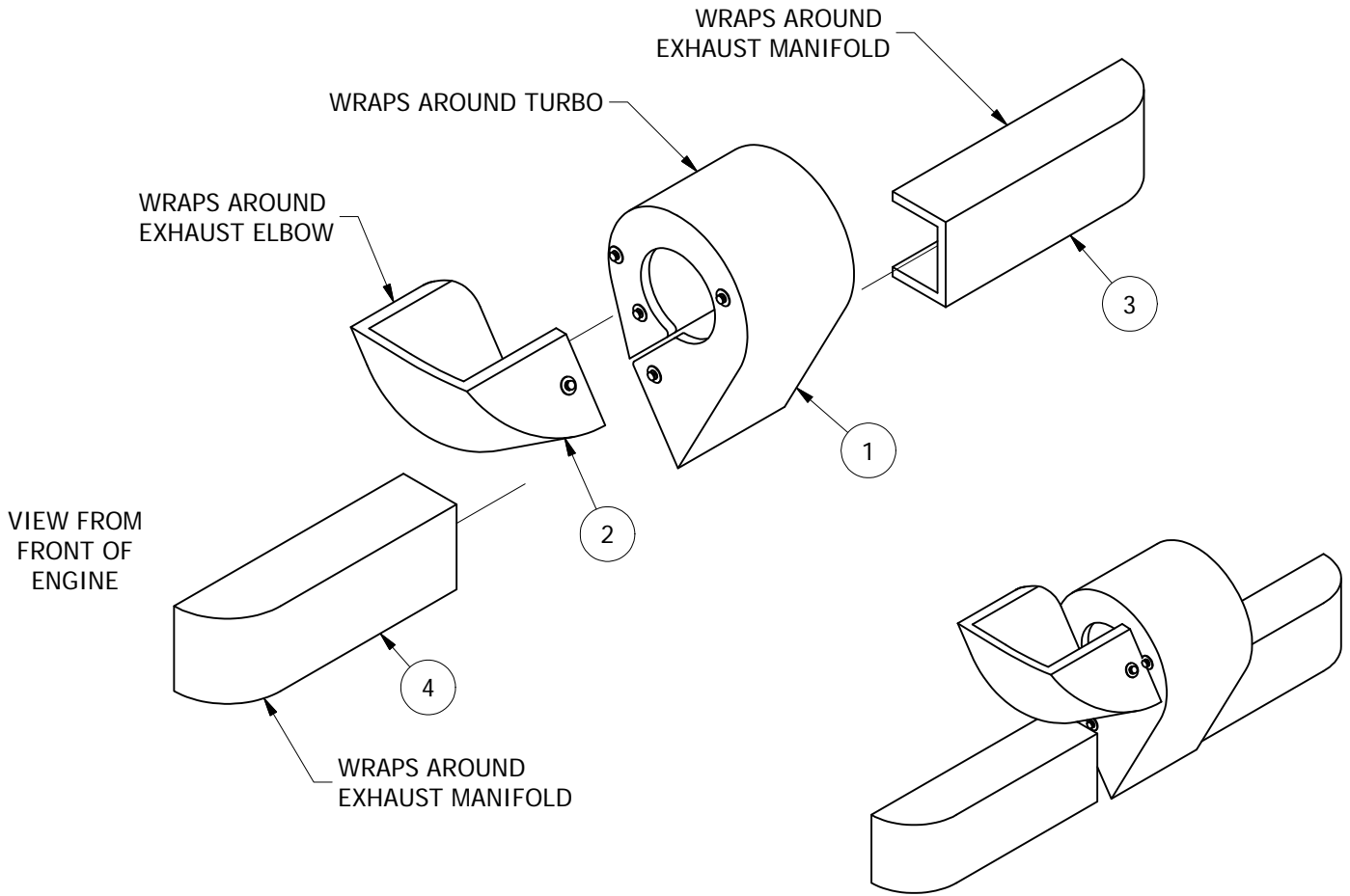
## ENGINE MOUNTS ALL DQ6H-UF MODELS



ITEM	CLARKE P/N	QTY	DESCRIPTION
1	C114032	1	FOOT, RIGHT REAR MOUNTING
2	C114033	1	FOOT, LEFT REAR MOUNTING
3	C114034	1	BRACE, REAR MOUNTING FEET
4	C114056	1	MOUNTING FEET, FRONT
5	NPN	6	BOLT, HEX HEAD - M10 x 1.5 x 35
6	NPN	2	BOLT, HEX HEAD - M16 x 2 x 65
7	NPN	2	BOLT, HEX HEAD - M16 x 2 x 70
8	NPN	2	BOLT, HEX HEAD - M16 x 2 x 75
9	NPN	6	NUT, HEX - M10 x 1.5
10	NPN	6	NUT, HEX - M16 x 2
11	NPN	6	WASHER, LOCK - M10
12	NPN	6	WASHER, LOCK - M16
13	NPN	12	WASHER, PLAIN -M10 X 20
14	NPN	12	WASHER, PLAIN -M16 X 32

NPN = NO PART NUMBER

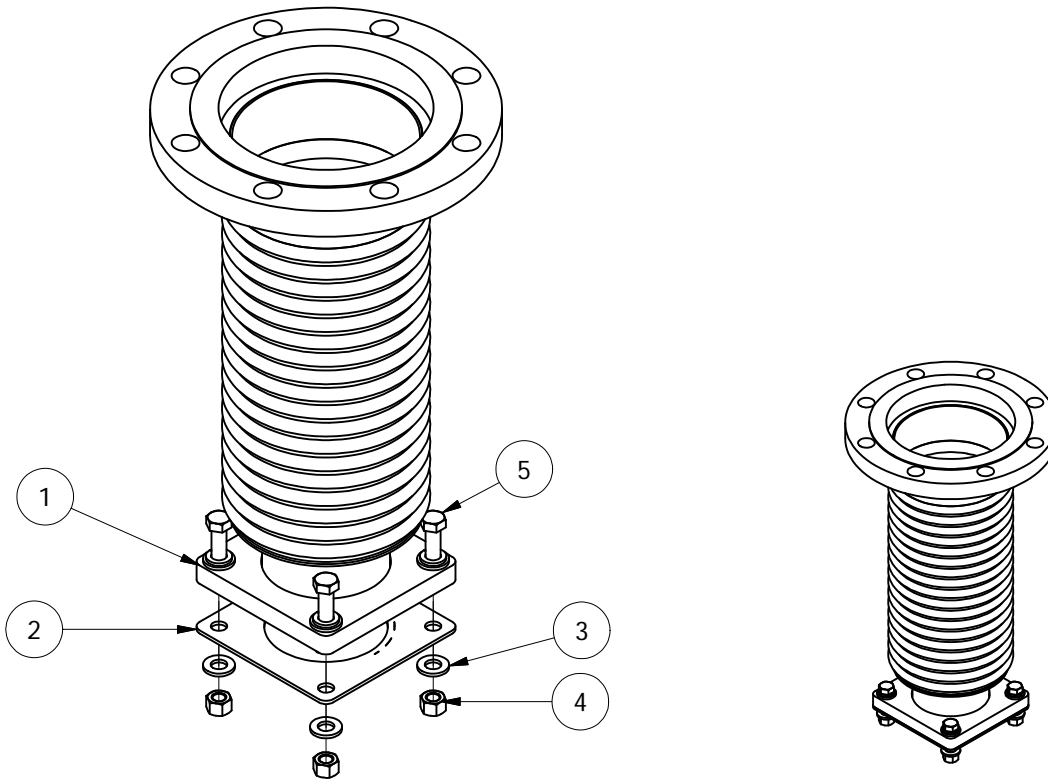
# EXHAUST BLANKETS ALL DQ6H-UF MODELS



ITEM	CLARKE P/N	QTY	DESCRIPTION
1	C061492	1	BLANKET, EXHAUST SIDE TURBO
2	C061494	1	BLANKET, EXHAUST ELBOW
3	C061489	1	BLANKET, EXHAUST MANIFOLD (RS) - REAR
4	C061490	1	BLANKET, EXHAUST MANIFOLD (LS) - FRONT

**NPN = NO PART NUMBER**

## EXHAUST FLEX CONNECTION ALL DQ6H-UF MODELS

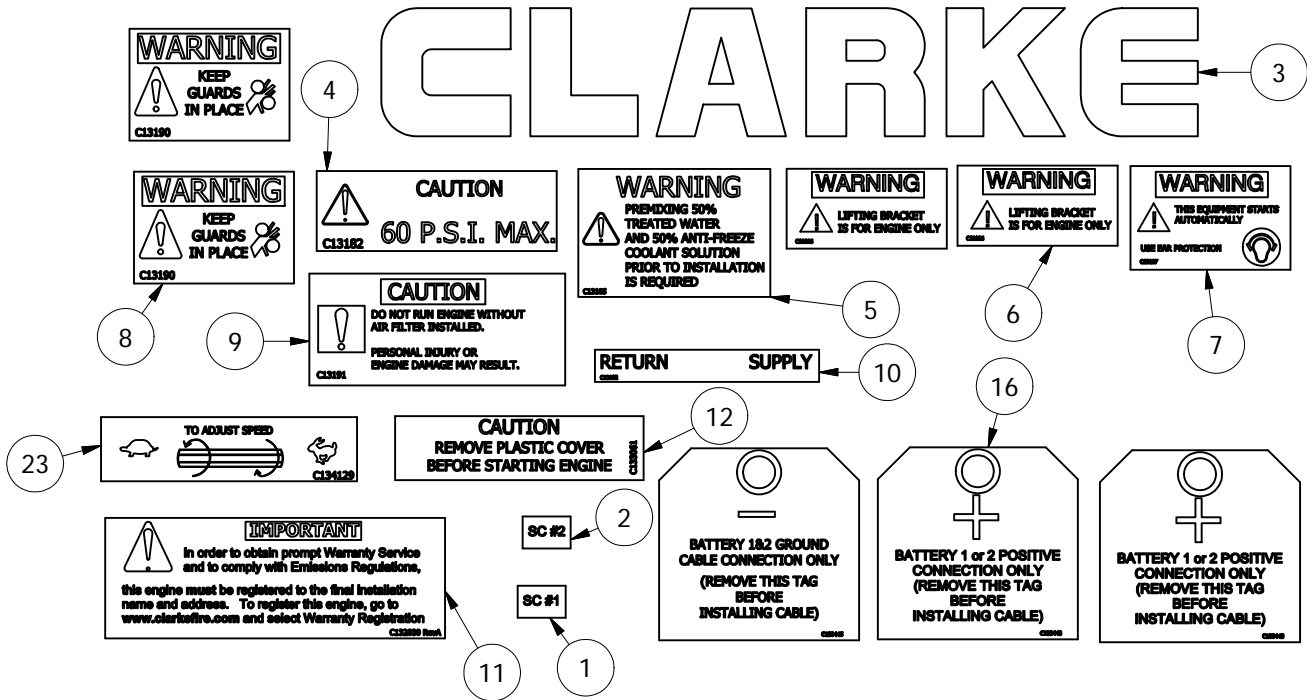


**NOTE: FOR SHIPPING, ATTACH  
GASKET (C061170) AND MOUNTING HARDWARE  
TO EXHAUST FLEX (C071170) AS SHOWN.**

ITEM	CLARKE P/N	QTY	DESCRIPTION
1	C061170	1	6" EXHAUST FLEX (FLANGED ENDS)
2	C061171	1	GASKET, EXHAUST FLEX
3	NPN	4	WASHER, PLAIN -M12 X 25.4
4	NPN	4	NUT, HEX - M12 x 1.75
5	NPN	4	BOLT, HEX HEAD - M12 x 1.75 x 45
5	NPN	4	WASHER, LOCK - M12

**NPN = NO PART NUMBER**

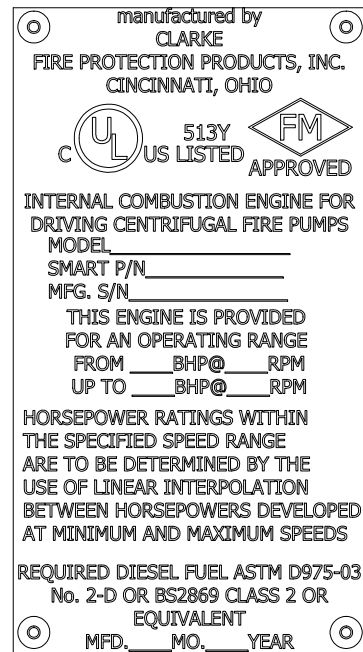
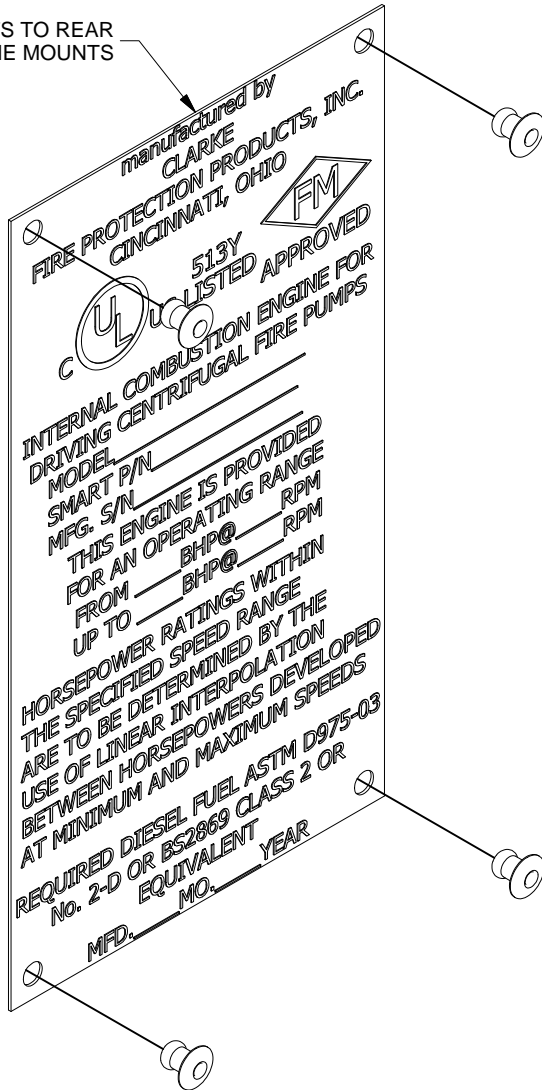
# LABELS ALL DQ6H-UF MODELS



ITEM	CLARKE P/N	QTY	DESCRIPTION
1	C12754	1	LABEL, STARTER CONTACTOR#1
2	C12755	1	LABEL, STARTER CONTACTOR #2
3	C13180	1	CLARKE LOGO LABEL
4	C13182	1	LABEL, 60 PSI MAX
5	C13185	1	LABEL, COOLANT
6	C13186	2	LABEL, LIFT BRACKET WARNING
7	C13187	1	LABEL, WARNING, STARTS AUTOMATICALLY
8	C13190	2	LABEL, KEEP GUARDS IN PLACE
9	C13191	1	LABEL, RUN ENGINE WITH AIR FILTER
10	C13192	1	LABEL, RETURN SUPPLY
11	C132030	1	LABEL, WARRANTY REGISTRATION
12	C133061	1	LABEL, AIR FILTER CAUTION
13	C133217	1	TAG, REMOVE SHIPPING BLOCK (NOT SHOWN)
14	C133250	1	FUEL LABEL (NOT SHOWN)
15	C133292	1	OPERATORS MANUAL (NOT SHOWN)
16	C133443	2	TAB, BATTERY 1&2 POS CONNECTION
17	C133445	1	TAG, BATTERY 1&2 NEG CONNECTION
18	C133485	1	FUEL LABEL (NOT SHOWN)
19	C133512	1	TAG, BLANK (NOT SHOWN)
20	C133941	1	TECHNICAL CATALOG (NOT SHOWN)
21	C133944	1	WIRING DIAGRAM (NOT SHOWN)
22	C134062	1	LABEL, DOOSAN ETS WARNING (NOT SHOWN)
23	C134129	1	LABEL, INCREASE-DECREASE SPEED

# NAMEPLATE ALL DOOSAN MODELS

MOUNTS TO REAR  
ENGINE MOUNTS



Refer to Clarke Nameplate  
for Fire Pump Rating

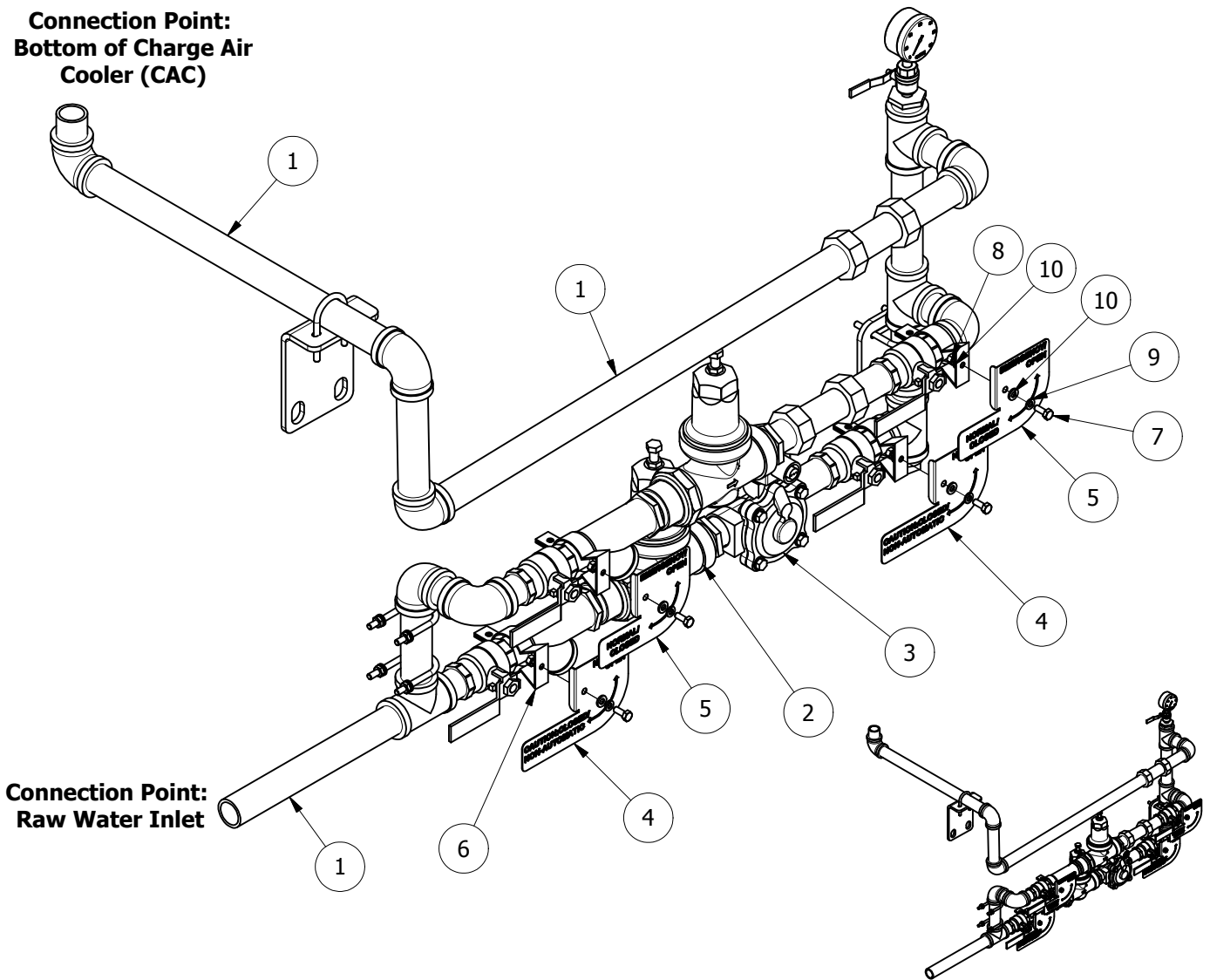
C134200

PLACE OVER THE SPEED  
AND HORSEPOWER ON  
DOOSAN NAMEPLATE

ITEM	MFR. P/N	QTY	DESCRIPTION
1	C124056	1	NAMEPLATE, UL-FM
2	0192413	4	RIVET, "V" SCREW
3	C134200	1	LABEL, DOOSAN NAMEPLATE COVER

## COOLING LOOP SYSTEM (HORIZONTAL) ALL DQ6H-UF MODELS

**Connection Point:  
Bottom of Charge Air  
Cooler (CAC)**



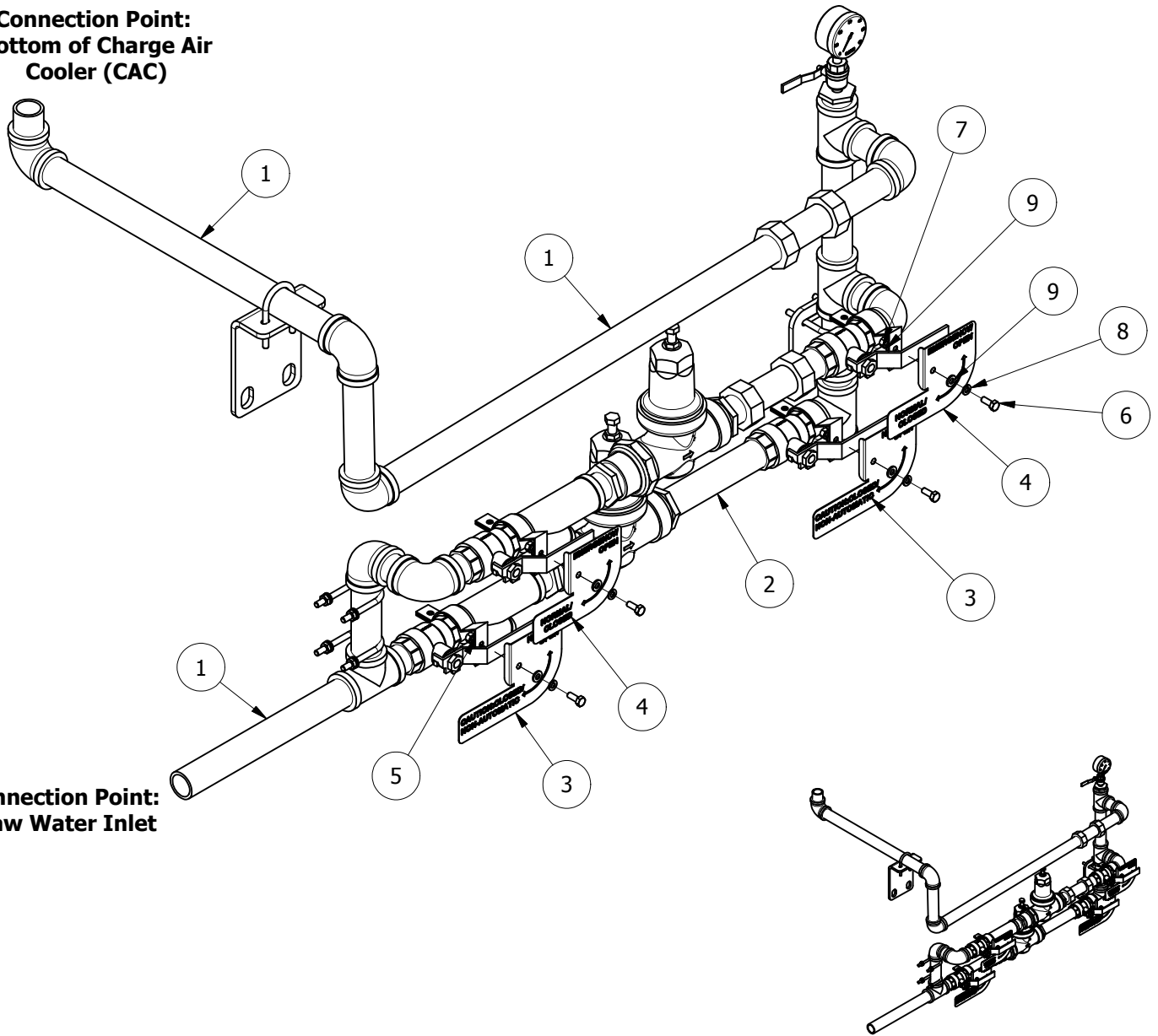
**Connection Point:  
Raw Water Inlet**

ITEM	CLARKE P/N	QTY	DESCRIPTION
1	C051650	1	KIT, GALVANIZED COOLIN LOOP PIPING - 1" NPT
2	C051750	1	ASSEMBLY, 1" (RH) GALV. COOLING LOOP W/ 1-1/4" REGULATORS - 24V
3	C121916	1	MODIFICATION, COIL ASSEMBLY
4	C125098	2	PLATE, INDICATING - NORMAL/OPEN
5	C125099	2	PLATE, INDICATING - NORMAL/CLOSED
6	C125307	4	HANGER, CLAMPING - 1 3/4"
7	NPN	4	BOLT, HEX HEAD - M6 x 1 x 16
8	NPN	4	NUT, HEX - M6 x 1
9	NPN	4	WASHER, LOCK - M6
10	NPN	8	WASHER, PLAIN -M6 X 13

**NPN = NO PART NUMBER**

## COOLING LOOP SYSTEM (VERTICAL) ALL DQ6H-UF MODELS

**Connection Point:  
Bottom of Charge Air  
Cooler (CAC)**



**Connection Point:  
Raw Water Inlet**

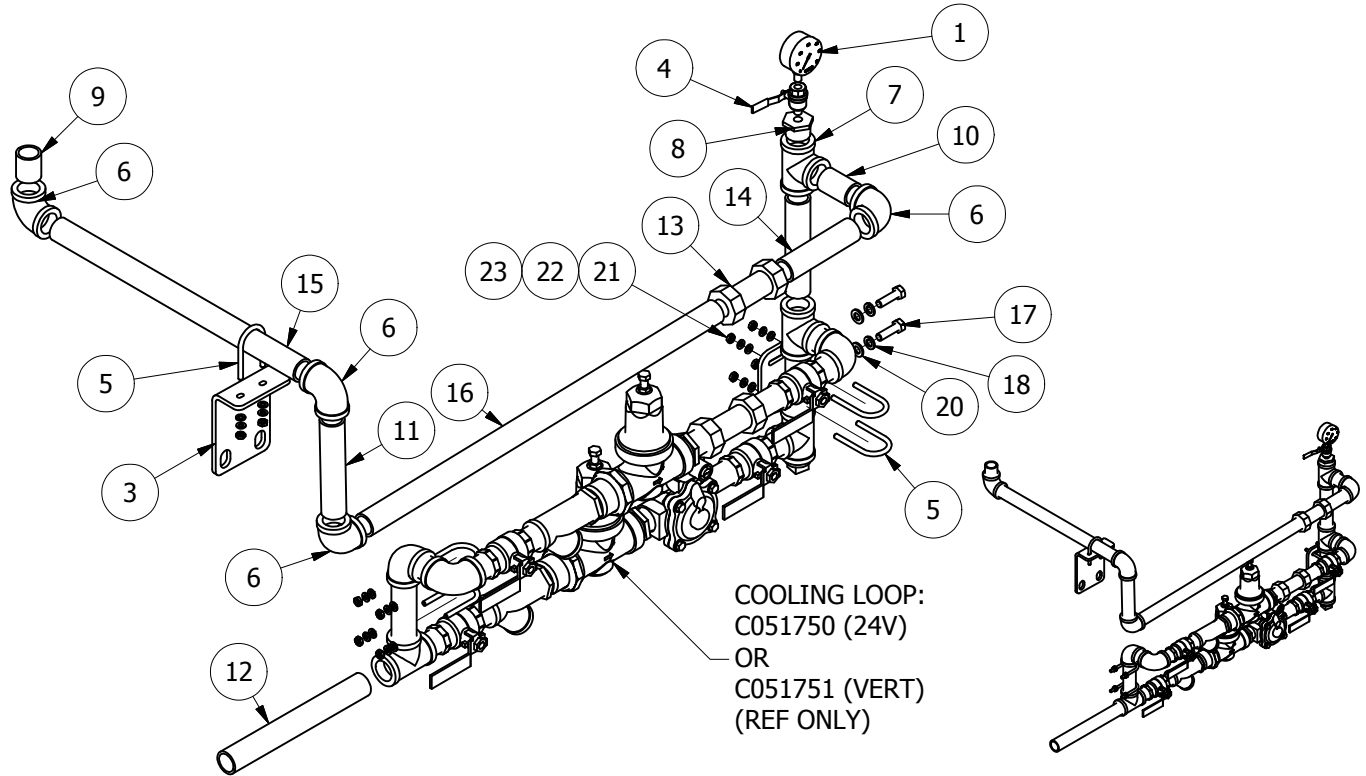
ITEM	CLARKE P/N	QTY	DESCRIPTION
1	C051650	1	KIT, GALVANIZED COOLIN LOOP PIPING - 1" NPT
2	C051751	1	ASSEMBLY, 1" (RH) GALV. COOLING LOOP W/ 1-1/4" REGULATORS - VERTICAL
3	C125098	2	PLATE, INDICATING - NORMAL/OPEN
4	C125099	2	PLATE, INDICATING - NORMAL/CLOSED
5	C125307	4	HANGER, CLAMPING - 1 3/4"
6	NPN	4	BOLT, HEX HEAD - M6 x 1 x 16
7	NPN	4	NUT, HEX - M6 x 1
8	NPN	4	WASHER, LOCK - M6
9	NPN	8	WASHER, PLAIN -M6 X 13

**NPN = NO PART NUMBER**

**Clarke Reference**  
Bill of Materials:  
050173 - 01JUN11



## KIT, GALVANIZED COOLIN LOOP PIPING - 1" NPT ALL DQ6H-UF MODELS

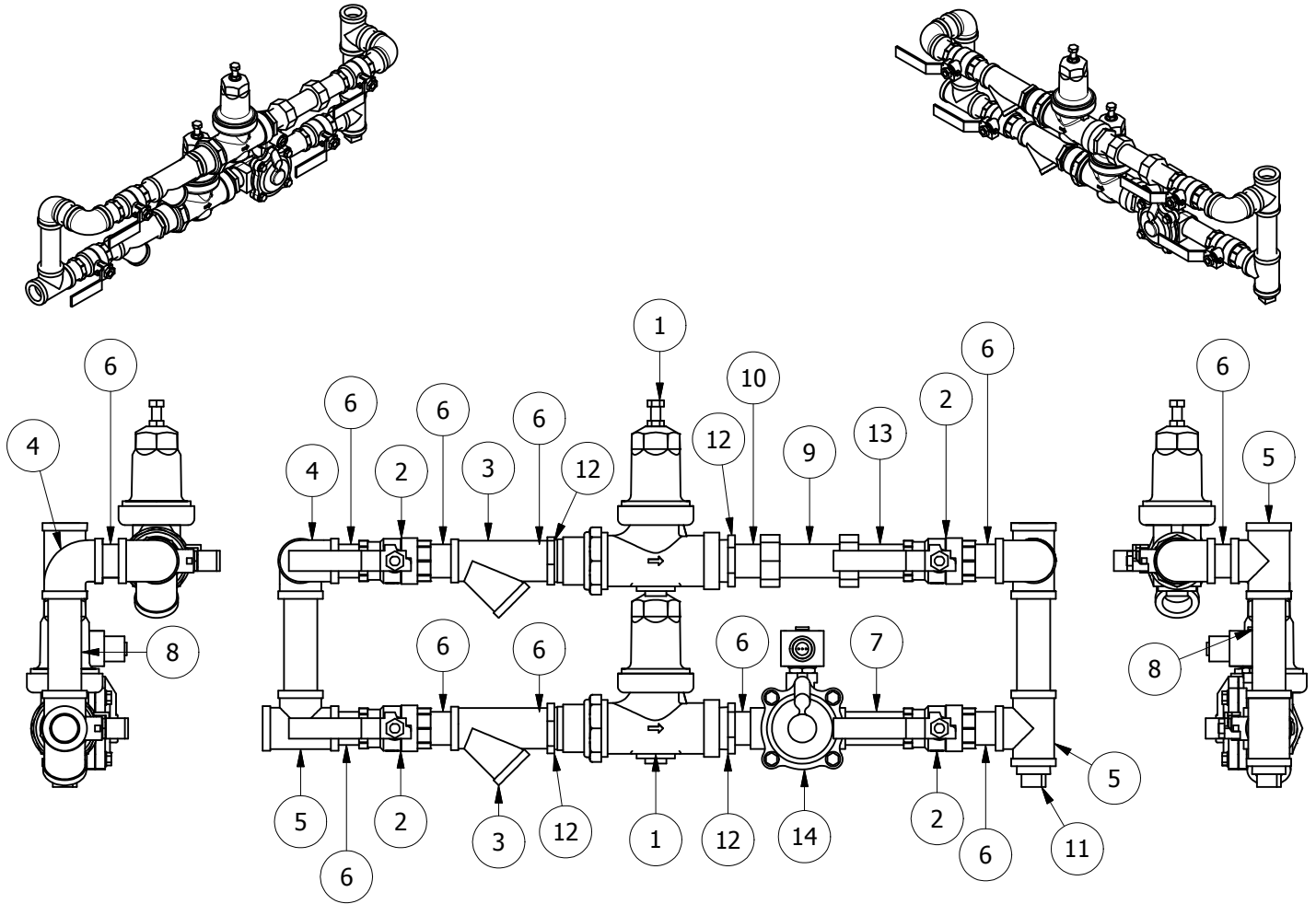


ITEM	CLARKE P/N	QTY	DESCRIPTION
1	C051545	1	PRESSURE GAUGE, GLYCERIN FILLED (TRERICE)
2	C051651	1	BRACKET, COOLING LOOP MOUNTING
3	C051711	1	SUPPORT, PIPING KIT
4	C05505	1	GAGE COOK, 0.25" PIPE
5	C05630	5	CLAMP, U-BOLT - 1"
6	C121843	4	ELBOW, GALVANIZED 90 DEGREE PIPE -1 NPT
7	C121861	1	TEE, GALVANIZED STRAIGHT PIPE - 1 NPT
8	C121933	1	BUSHING, GALVANIZED PIPE - 1 x 1/4 NPT
9	C122098	1	NIPPLE, GALVANIZED STEEL PIPE - 1 NPT X 1.5 LG.
10	C122100	1	NIPPLE, GALVANIZED STEEL PIPE - 1 NPT X 2 LG.
11	C122108	2	NIPPLE, GALVANIZED STEEL PIPE - 1 NPT X 6 LG.
12	C122116	1	NIPPLE, GALVANIZED STEEL PIPE - 1 NPT X 10 LG.
13	C122257	1	COUPLING, GALVANIZED DRESSER - 1"
14	C122389	1	TOE NIPPLE, STEEL, GALVANIZED - 1 NPT X 5 LG.
15	C122701	1	NIPPLE, GALVANIZED STEEL PIPE - 1 NPT X 18 LG.
16	C127423	1	TOE NIPPLE, STEEL, GALVANIZED - 1 NPT X 26 LG.
17	NPN	2	BOLT, HEX HEAD - M10 x 1.5 x 35
18	NPN	2	WASHER, LOCK - M10
19	NPN	2	NUT, HEX - M10 x 1.5
20	NPN	4	WASHER, PLAIN -M10 X 20
21	NPN	10	NUT, HEX - 1/4 - 20
22	NPN	10	WASHER, LOCK - 1/4
23	NPN	10	WASHER, PLAIN - 0.25 X 0.5

**NPN = NO PART NUMBER**

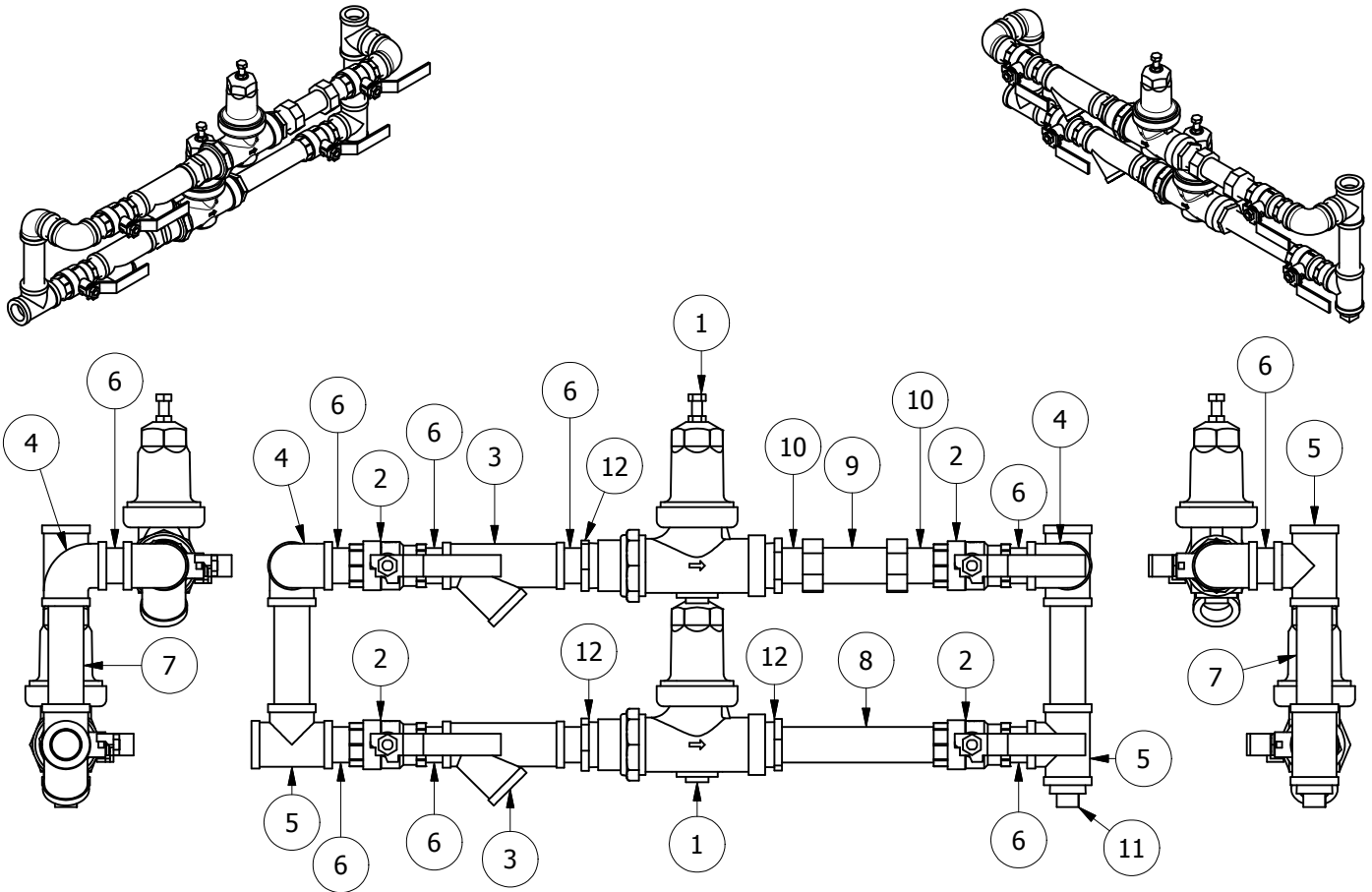
**Clarke Reference**  
Bill of Materials:  
 C051650 - B

# ASSEMBLY, 1" (RH) GALV. COOLING LOOP W/ 1-1/4" REGULATORS - 24V



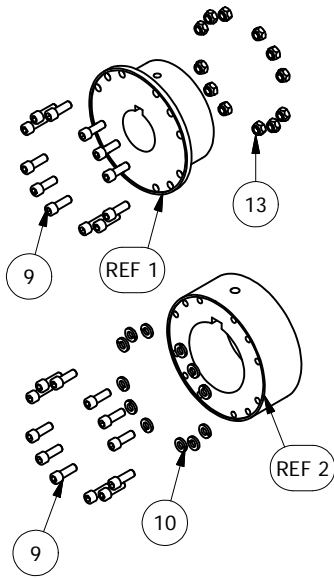
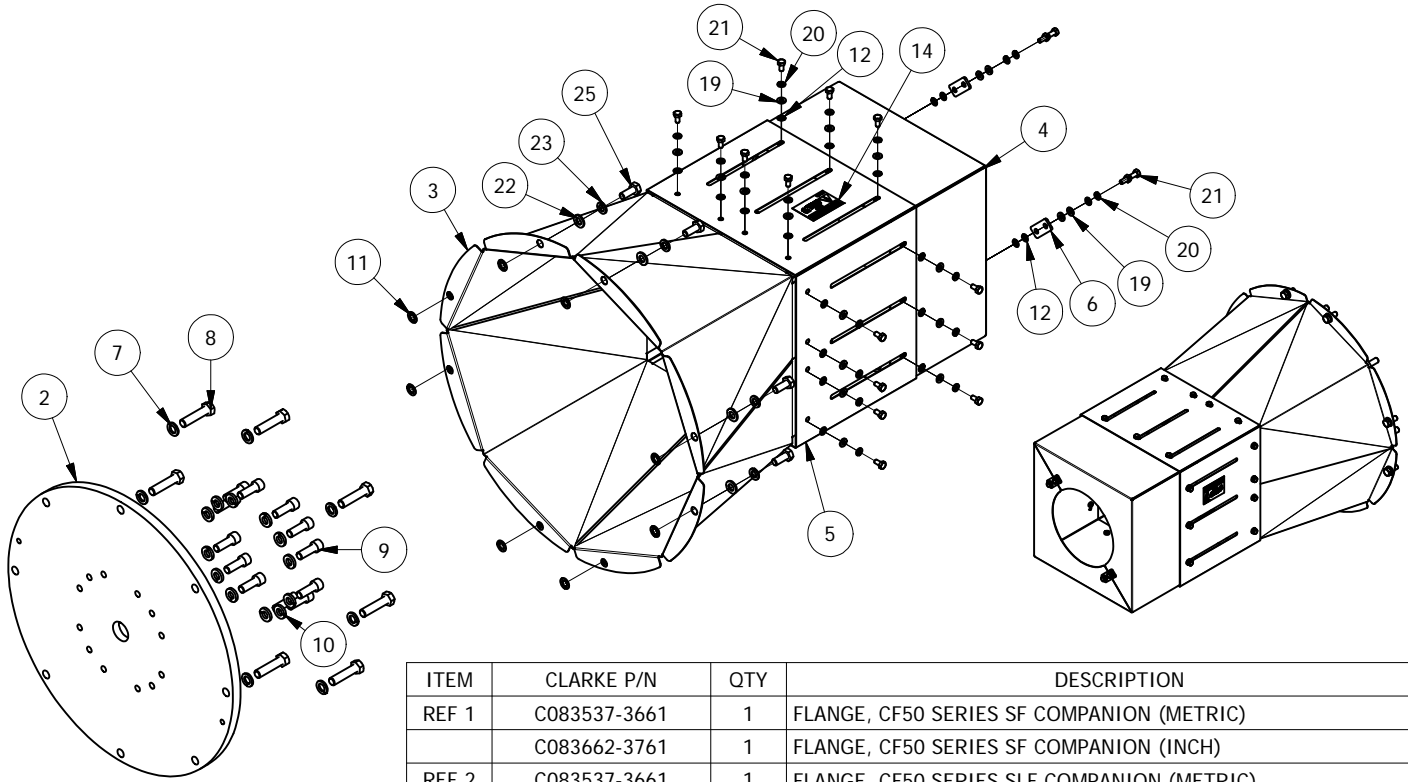
ITEM	CLARKE P/N	QTY	DESCRIPTION
1	C051759	2	REGULATOR - 1 1/4"
2	C121813	4	VALVE, BRONZE BALL - 1" NPT
3	C121819	2	STRAINER, BRONZE Y TYPE - 1 NPT
4	C121843	3	ELBOW, GALVANIZED 90 DEGREE PIPE -1 NPT
5	C121861	3	TEE, GALVANIZED STRAIGHT PIPE - 1 NPT
6	C122098	11	NIPPLE, GALVANIZED STEEL PIPE - 1 NPT X 1.5 LG.
7	C122102	1	NIPPLE, GALVANIZED STEEL PIPE - 1 NPT X 3 LG.
8	C122105	2	NIPPLE, GALVANIZED STEEL PIPE - 1 NPT X 4.5 LG.
9	C122257	1	COUPLING, GALVANIZED DRESSER - 1"
10	C122387	1	TOE NIPPLE, STEEL, GALVANIZED - 1 NPT X 3 LG.
11	C123006	1	PLUG, STEEL, GALVANIZED SQUARE HEAD PIPE - 1 NPT
12	C123287	4	BUSHING, GALVANIZED PIPE - 1 1/4 x 1 NPT
13	C123344	1	TOE NIPPLE, STEEL, GALVANIZED - 1 NPT X 3.5 LG.
14	C124062	1	VALVE, SOLENOID - 24 VOLT (REF. COIL MODIFICATION P/N - C121916)

# ASSEMBLY, 1" (RH) GALV. COOLING LOOP W/ 1-1/4" REGULATORS - VERTICAL



ITEM	CLARKE P/N	QTY	DESCRIPTION
1	C051759	2	REGULATOR - 1 1/4"
2	C121813	4	VALVE, BRONZE BALL - 1" NPT
3	C121819	2	STRAINER, BRONZE Y TYPE - 1 NPT
4	C121843	3	ELBOW, GALVANIZED 90 DEGREE PIPE -1 NPT
5	C121861	3	TEE, GALVANIZED STRAIGHT PIPE - 1 NPT
6	C122098	10	NIPPLE, GALVANIZED STEEL PIPE - 1 NPT X 1.5 LG.
7	C122105	2	NIPPLE, GALVANIZED STEEL PIPE - 1 NPT X 4.5 LG.
8	C122109	1	NIPPLE, GALVANIZED STEEL PIPE - 1 NPT X 6.5 LG.
9	C122257	1	COUPLING, GALVANIZED DRESSER - 1"
10	C122387	2	TOE NIPPLE, STEEL, GALVANIZED - 1 NPT X 3 LG.
11	C123006	1	PLUG, STEEL, GALVANIZED SQUARE HEAD PIPE - 1 NPT
12	C123287	4	BUSHING, GALVANIZED PIPE - 1 1/4 x 1 NPT

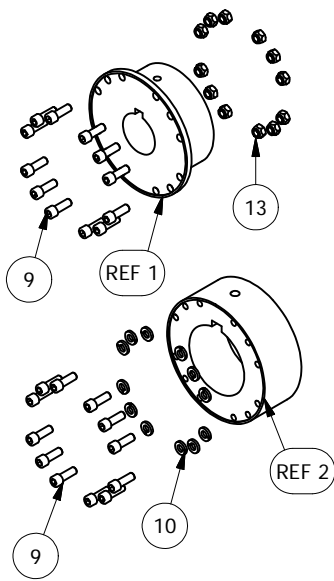
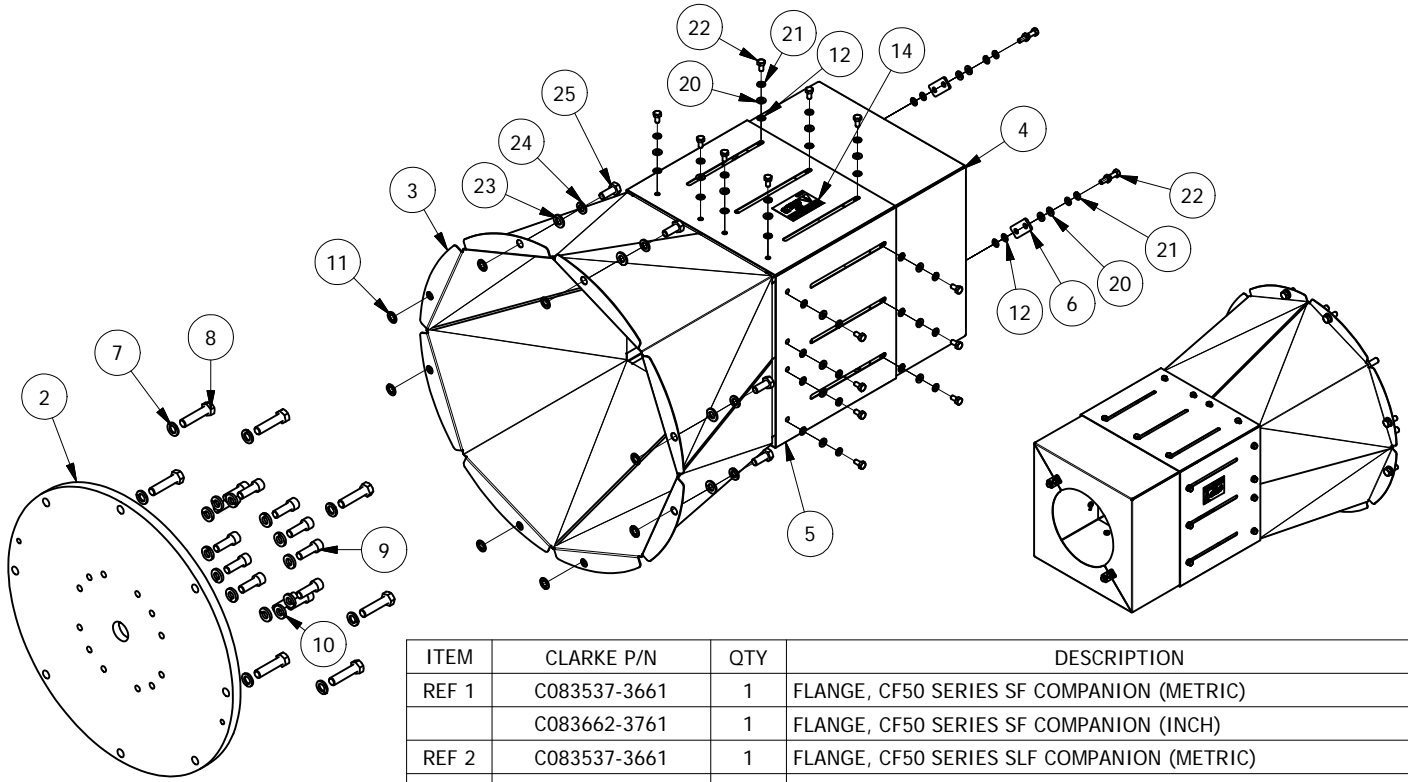
## DRIVE, LISTED CDS50-SC WITH GUARD ALL DP6H-UF & DQ6H-UF MODELS



ITEM	CLARKE P/N	QTY	DESCRIPTION
REF 1	C083537-3661	1	FLANGE, CF50 SERIES SF COMPANION (METRIC)
	C083662-3761	1	FLANGE, CF50 SERIES SF COMPANION (INCH)
REF 2	C083537-3661	1	FLANGE, CF50 SERIES SLF COMPANION (METRIC)
	C083662-3761	1	FLANGE, CF50 SERIES SLF COMPANION (INCH)
1	C083770	1	DRIVESHAFT, CDS50-SC (NOT SHOWN)
2	C084947 or C084930	1	DRIVE DISC - SAE 14" FLYWHEEL FOR 81(CF50) COMPANION FLANGE
3	C101070	4	GUARD, SAE #1 FLYWHEEL HOUSING
4	C101068	2	CAP, GUARD END
5	C101072	2	GUARD, CENTER DRIVESHAFT
6	C10326	2	STABILIZER, END CAP
7	C122979	8	WASHER, CLASS 10.9 LOCK - M12
8	C127266	8	BOLT, CLASS 10.9 HEX HEAD - M12 x 1.5 x 50
9	C12841	24	SCREW, GRADE 8 SOCKET HEAD CAP 7/16"-20 X 1-1/4"
10	C123000	24	WASHER, LOCK - 0.4375 GRADE 8
11	C126780	8	WASHER, 3/8" PLASTIC RETAINING
12	C126772	32	WASHER, 1/4" METAL RETAINING
13	C125864	12	NUT, LOCK - 7/16-20 UNF GRADE 8
14	C13190	1	LABEL, KEEP GUARDS IN PLACE
15	C13258	1	LABEL, DRIVESHAFT - LUBRICATE (NOT SHOWN)
16	C132570	1	LABEL, DRIVESHAFT ALIGNMENT CDS50-SC (NOT SHOWN)
17	C125781	1	POCKET SCALE 1/2 MM INCREMENTS (NOT SHOWN)
18	C133287	1	INSTRUCTIONS-BOLT RETAINERS FOR DRIVESHAFT (NOT SHOWN)
19	NPN	32	WASHER, PLAIN -M6 X 13
20	NPN	32	WASHER, LOCK - M6
21	NPN	32	BOLT, HEX HEAD - M6 x 1 x 12
22	NPN	8	WASHER, PLAIN -M10 X 20
23	NPN	8	WASHER, LOCK - M10
24	NPN	8	BOLT, HEX HEAD - M10 X 1.5 X 25

**NPN = NO PART NUMBER**

# DRIVE, NON-LISTED SC81A WITH GUARD ALL DP6H-UF & DQ6H-UF MODELS



ITEM	CLARKE P/N	QTY	DESCRIPTION
REF 1	C083537-3661	1	FLANGE, CF50 SERIES SF COMPANION (METRIC)
	C083662-3761	1	FLANGE, CF50 SERIES SF COMPANION (INCH)
REF 2	C083537-3661	1	FLANGE, CF50 SERIES SLF COMPANION (METRIC)
	C083662-3761	1	FLANGE, CF50 SERIES SLF COMPANION (INCH)
1	C08628	1	DRIVESHAFT, SC81A (NOT SHOWN)
2	C084947 or C084930	1	DRIVE DISC - SAE 14" FLYWHEEL FOR 81(CF50) COMPANION FLANGE
3	C101070	4	GUARD, SAE #1 FLYWHEEL HOUSING
4	C101068	2	CAP, GUARD END
5	C101072	2	GUARD, CENTER DRIVESHAFT
6	C10326	2	STABILIZER, END CAP
7	C122979	8	WASHER, CLASS 10.9 LOCK - M12
8	C127266	8	BOLT, CLASS 10.9 HEX HEAD - M12 x 1.5 x 50
9	C12841	24	SCREW, GRADE 8 SOCKET HEAD CAP 7/16"-20 X 1-1/4"
10	C123000	24	WASHER, LOCK - 0.4375 GRADE 8
11	C126780	8	WASHER, 3/8" PLASTIC RETAINING
12	C126772	32	WASHER, 1/4" METAL RETAINING
13	C125864	12	NUT, LOCK - 7/16-20 UNF GRADE 8
14	C13190	1	LABEL, KEEP GUARDS IN PLACE
15	C13258	1	LABEL, DRIVESHAFT - LUBRICATE (NOT SHOWN)
16	C132648	1	LABEL, DRIVESHAFT ALIGNMENT SC81A (NOT SHOWN)
17	C131004	1	BOLT TIGHTENING INSTRUCTIONS (NOT SHOWN)
18	C125781	1	POCKET SCALE 1/2 MM INCREMENTS (NOT SHOWN)
19	C133287	1	INSTRUCTIONS-BOLT RETAINERS FOR DRIVESHAFT (NOT SHOWN)
20	NPN	32	WASHER, PLAIN -M6 X 13
21	NPN	32	WASHER, LOCK - M6
22	NPN	32	BOLT, HEX HEAD - M6 x 1 x 12
23	NPN	8	WASHER, PLAIN -M10 X 20
24	NPN	8	WASHER, LOCK - M10
25	NPN	8	BOLT, HEX HEAD - M10 X 1.5 X 25

**NPN = NO PART NUMBER**