

### Gasket Grade & Gasket Selection

■ The tables below provide assistance (not as guarantee), in selecting the optional gasket grade for the intended service. The range of applications shown is of general nature only. It should be noted that there are specific services for which the gaskets are not recommended. In order to assure maximum gasket service life for each specific service, the optimal gasket grade requires consideration of the following factors: fluid temperature, fluid concentration and continuity of service. Unless otherwise noted, all gasket recommendations are based upon ambient working temperature service condition. For unusual or unspecified services, please contact the Modgal Metal Ltd. for evaluation and recommendation.

#### Specifications

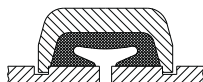
Grade	Working temp. range	Gasket material	Marking	Service recommendations \ applications
EP	-30°F to +230°F -34°C to +110°C	EPDM	Green Strip	For use in cold & hot water (up to +230°F / +110 °c), variety of diluted acids, oil free air and other chemical services. (Not recommended for petroleum services).
NT	-20°F to +180°F -29°C to + 82°C	Nitrile	Orange Strip	For use in variety of petroleum products, hydrocarbons, air with oil vapor (up to +150°F/ +65°C) mineral oil and water waste (Not recommended for hot water services).
L	-30°F to +350°F -34°C to + 177°C	Silicone	Red Gasket	For use in dry heat, air without hydrocarbons to +177 °C and high temperature chemical services.
O	+20°F to +300°F -7°C to + 149°C	Fluoro-elastomer (Viton)	Bleu Stripe	Recommended for many oxidizing acids, petroleum oils, halogenated hydrocarbons, lubricants, hydraulic fluids, organic fluids and air with hydrocarbons.

#### Air, Water and Petroleum Applications

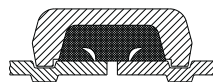
Applications	Recommended Gasket Grade
Air, oil-free, temp. -30°F to +230°F -34°C to +110°C	EP
Air, oil vapor, temp -20°F to +180°F -18°C to +82°C	NT
Air (no oil vapors) -30°F to +350°F -34°C to +177°C	L
Water, temp, upto + 150°F / +66°C	EP/NT
Water, temp, upto + 230°F / +110°C	EP
Water acid mine	EP/NT
Water, seawater	EP
Water, waste	EP/NT
Water, steam	Not Recommended
Petrol / Gasoline (leaded)	NT/O
Petroleum oils	NT/O

#### Gasket Types

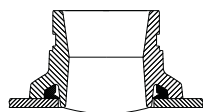
QUIKCOUP® offers a variety of gaskets types for a wide range of applications and services. Each gasket type serves a specific application. The sealing effect is enhanced by pressure or vacuum in the line.



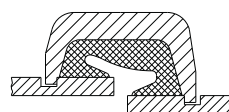
Standard



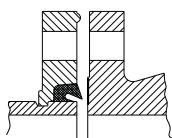
Flush Seal (\*)



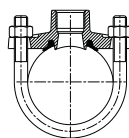
Quik-T for style 08, 88



Reducing for style 71



Reducing for style 90



Quiklet for style 99

► (\*) Flush Seal Gasket is recommended in vacuum services and dry sprinkler piping systems. Available in sizes range DN32 to DN 200, with all Quikcoup® couplings types.

### Gasket Grade & Gasket Selection

■ Unless otherwise noticed, all gasket listings are based on ambient temperature service conditions. Where its possible, materials should be subjected to simulated service conditions for determining their suitability to the service intended. For service not listed, please contact the factory for recommendations.

Chemical Application	Gasket Grade	Chemical Application	Gasket Grade	Chemical Application	Gasket Grade	Chemical Application	Gasket Grade	Chemical Application	Gasket Grade
acetic acid 50%	EP	calcium liquors	EP	fluoroboric acid	EP	nickel nitrate	EP	sodium silicate	EP
acetone	EP	cane suger liquors	NT	fluorosilicic acid	EP	c max nitric acid to 10% 24	EP	sodium sulphide	EP
acetaldehyde	EP	carbitol	EP	fly ash	EP	nitrous oxide	EP	sodium sulphite solution to 20%	EP
acethlene	EP	carbon dioxide , dry	EP	formadehyde	EP	octyl alcohol	NT	stannous chloride to 15%	EP
alkalis	EP	carbon dioxide , wet	EP	formic acid	EP	olive oil	NT	strach	EP
alums	EP	carbon monoxide	EP	freon 11 , 54° c max	NT	oxalic acid	EP	stearic acid	NT
aluminium chloride	EP	carbon tetrachloride	L	freon 12, 113,114,115 54° c max	NT	ozone	NT	styrenez	L
aluminum fluoride	EP	castor oil	NT	fructose	NT	phosphate ester	EP	sucrose solutions	NT
aluminum hydroxide	EP	cellosolve	EP	gasoline, refined	NT	phosphoric acid to 75% and 21° c max	EP	sulphor	EP
aluminum nitrate	EP	chlorobenzene	L	glucose	EP	phosphoric acid to 85% and 66° c max	L	sulphric acid to 25% 66° c max	EP
aluminum salts	EP	chlorobenzene chloride	L	glue	NT	photographic solutions	NT	tetrachlorethylene	L
ammonia gas, cold	EP	chloroform	L	glycerin	EP	plating solutions (gold,brass,cadium,copper,lead,silver,tin,zinc)	EP	toluene	L
ammonia liquid	EP	chrome alum	EP	glycerol	EP	potassium bromide	EP	trichloroethylen 93° c max	L
ammonium chloride	EP	chrome plating solutions	L	glycol	EP	potassium carbonate	EP	triethanolamine	EP
ammonium fluoride	EP	citric acid	L	halon 1301	EP	potassium chloride	EP	turpentine 70° c max	NT
ammonium hydroxide	EP	coconut oil	NT	hepatane	NT	potassium chromate	NT	urea	EP
ammonium nitrate	EP	coke oven gas	NT	hexaldehyde	EP	potassium cyanide	EP	vegetable oils	NT
amyl acetate	EP	copper carbonate	EP	hexane	NT	potassium ferricyanide	EP	vinegar	NT
amyl alcohol	EP	coppr chloride	EP	hexylane glycol	NT	potassium ferrocyanide	EP	white liquor	EP
aniline	EP	copper cyanide	EP	hydrochloric acid , to 36% , 24° c max	EP	potassium hydroxide	NT	xylene(xylol) 70° c max	L
animal fats	NT	copper silphate	EP	hydrofluosilicic acid	NT	potassium iodide	EP	zinc sulphate	NT
arsenic acid, to 75%	NT	corn oil	NT	hydrogen peroxide , to 50%	EP	potassium nitrate	EP		
barium carbonate	EP	cotton seed oil	NT	hydroquinone	NT	potassium permanganate , saturated to 25%	EP		
barium chloride	EP	crosole, cresylic acid	NT	hydrogen sulfide	EP	potassium sulphate	EP		
barium hydroxide	EP	crosole wood	NT	isooctane	NT	propanol	EP		
barium nitrate	EP	cupric chloride	EP	isobutyl alcohol	EP	propyl alcohol	EP		
barium sulphide	EP	cupric fluoride	EP	isopropyl alcohol	EP	propylene glycol	EP		
beet sugar liquors	NT	cupric sulphate	EP	lactic acid	NT	pydraul 312c	L		
benzene	L	cychohexanol	L	lead acetate	EP	pyroguard 55	EP		
benzoic acid	L	diacetone alcohol	EP	linseed oil	NT	pyrrole	EP		
benzyl alcohol	EP	dichlorobenzene	L	lithium bromide	NT	salicylic acid	EP		
benzyl chloride	EP	dichlorothylene	L	magnesium chloride	EP	silver cyanide	EP		
black sulfate liquor	NT	diesel oil	NT	magnesium hydroxide	EP	silver nitrate	EP		
borax	EP	epson salt	EP	magnesium nitrate	EP	soda ash, sodium carbonate	EP		
boric acid	EP	ethane	EP	magnesium sulphate	EP	sodium bicarbonate	EP		
bromine	L	ethanolamine	EP	malonyl nitrile	EP	sodium bisulphate	EP		
butyl alcohol	EP	ethyl alcohol	EP	mercuric chloride	EP	sodium bisulphate (black liquor)	EP		
butyl stearate	EP	ethyl chloride	EP	mercuric cyanide	EP	sodium bromide	EP		
bulyene	NT	ethylene chlorohydrin	EP	mercury	EP	sodium chlorate	EP		
calcium bisulphate	NT	ethylene dimine	EP	methyl alcohol methanol	EP	sodium chloride	EP		
calcium bisuphide	NT	ethylene dichloride (dichloroethane)	L	methyl cellosolve(ether)	EP	sodium cyanide	EP		
calcium bisulphite	NT	ethylene glycol	EP	methyl formate	EP	sodium hydroxide to 50%	EP		
calcium carbonate	EP	ferric chloride, to 35%	EP	methyl isobutyl carbinol	EP	sodium hypochlorite to 20%	EP		
calcium chloride	EP	ferric nitrate	EP	mineral oils	NT	sodium metaphosphate	EP		
calcium hydroxide (lime)	EP	ferric sulphate	EP	naphtha 71° c max	L	sodium nitrate	EP		
calcium sulfate	EP	ferrous chloride	EP	naphthalene 80° c	L	sodium peroxide	EP		
calcium sulfide	EP	fish oils	NT	nickel chloride	EP	sodium phosphate	EP		