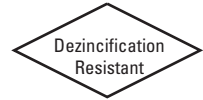


# Bronze Ball Valves

Three-Piece Body • Full Port • Bronze Trim • Blowout-Proof Stem



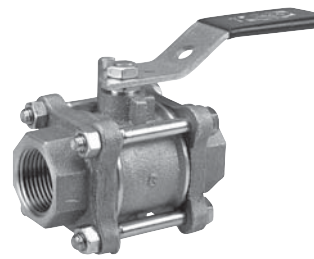
**600 PSI/41.4 Bar Non-Shock Cold Working Pressure**  
**150 PSI/10.3 Bar Saturated Steam**

CONFORMS TO MSS SP-110

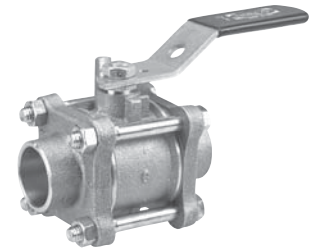
## MATERIAL LIST

PART	SPECIFICATION
1. Handle Nut	Zinc Plated Steel
2. Handle	Zinc Plated Steel Clear Chromate Plastisol Coated
3. Threaded Pack Gland	Brass ASTM B 16 Alloy C36000
4. Stem	Silicon Bronze ASTM B 371 Alloy C69430 or ASTM B 99 Alloy C65100
5. Body	Bronze ASTM B 584 Alloy C84400
6. Packing	PTFE
7. Body End (2)	Bronze ASTM B 584 Alloy C84400
8. O-Ring Seal (2)	Fluorocarbon Rubber
9. Seat Ring (2)	PTFE
10. Ball	Brass ASTM B 124 Alloy C37700 or ASTM B16 Alloy C36000 EACH with Hard Chrome Plate
11. Thrust Washer	Reinforced PTFE
12. Body Bolts	Zinc Dichromate Plated Steel ASTM A 449 Grade 5
13. Body Nuts	Zinc Dichromate Plated Steel ASTM A 449 Grade 5

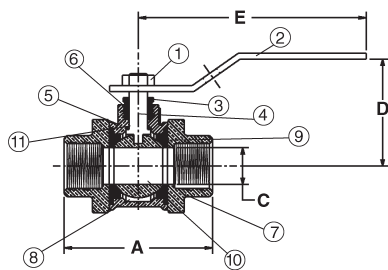
Note: Valves are static grounded by a grounding washer. (Not Shown)



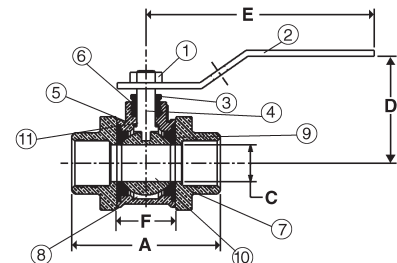
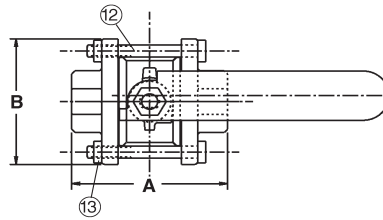
**T-595-Y**  
Threaded



**S-595-Y**  
Solder



**T-595-Y**  
NPT x NPT



**S-595-Y**  
C x C

## DIMENSIONS—WEIGHTS—QUANTITIES

Size	T-595-Y		S-595-Y		Dimensions					S-595-Y		Master Ctn. Qty.	
	A	A	A	A	B	C	D	E	F	T-595-Y	S-595-Y		
In. mm.	In. mm.	In. mm.	In. mm.	In. mm.	In. mm.	In. mm.	In. mm.	In. mm.	In. mm.	Lbs. Kg.	Lbs. Kg.		
1/4	8 2.50	64 1.69	43 1.81	46 1.81	46 .38	10 1.69	43 3.91	99 1.13	29 1.03	.47	.89	.40	50
3/8	10 2.50	64 1.81	46 1.81	46 .38	10 1.69	43 3.91	99 1.13	29 .98	.44	.89	.40	50	
1/2	15 2.50	64 2.06	52 1.81	46 .50	13 1.69	43 3.91	99 1.13	29 1.03	.47	.89	.40	50	
3/4	20 3.00	76 2.94	75 1.94	49 .75	19 2.00	51 4.66	118 1.44	37 1.70	.77	1.59	.72	30	
1	25 3.69	94 3.66	93 2.50	64 1.00	25 2.25	57 4.66	118 1.84	47 2.82	1.28	2.55	1.15	20	
1 1/4	32 4.09	104 3.91	99 2.69	68 1.25	32 2.75	70 6.69	170 1.97	50 3.96	1.80	3.61	1.64	10	
1 1/2	40 4.56	116 4.60	117 3.00	76 1.50	38 2.97	75 6.69	170 2.38	60 5.68	2.57	5.31	2.41	10	
2	50 6.16	156 5.78	147 4.00	102 2.00	51 3.63	92 6.69	170 3.06	78 11.40	5.17	10.60	4.81	4	
2 1/2	65 6.84	174 6.94	176 5.00	127 2.50	64 4.09	104 8.00	203 4.00	102 21.07	9.56	19.30	8.75	2	

◆ For detailed Operating Pressure, refer to Pressure Temperature Chart on page 41.