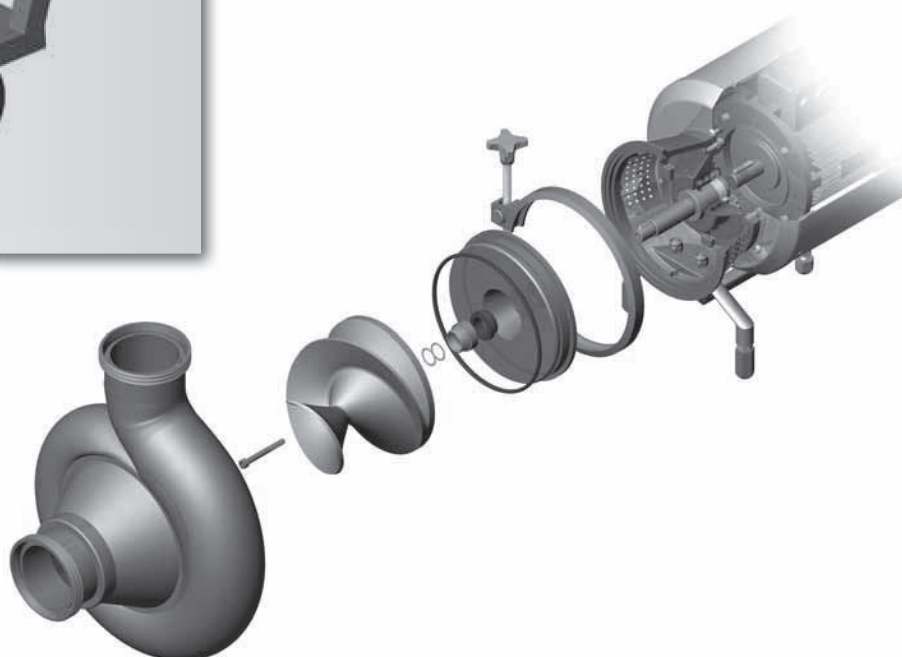
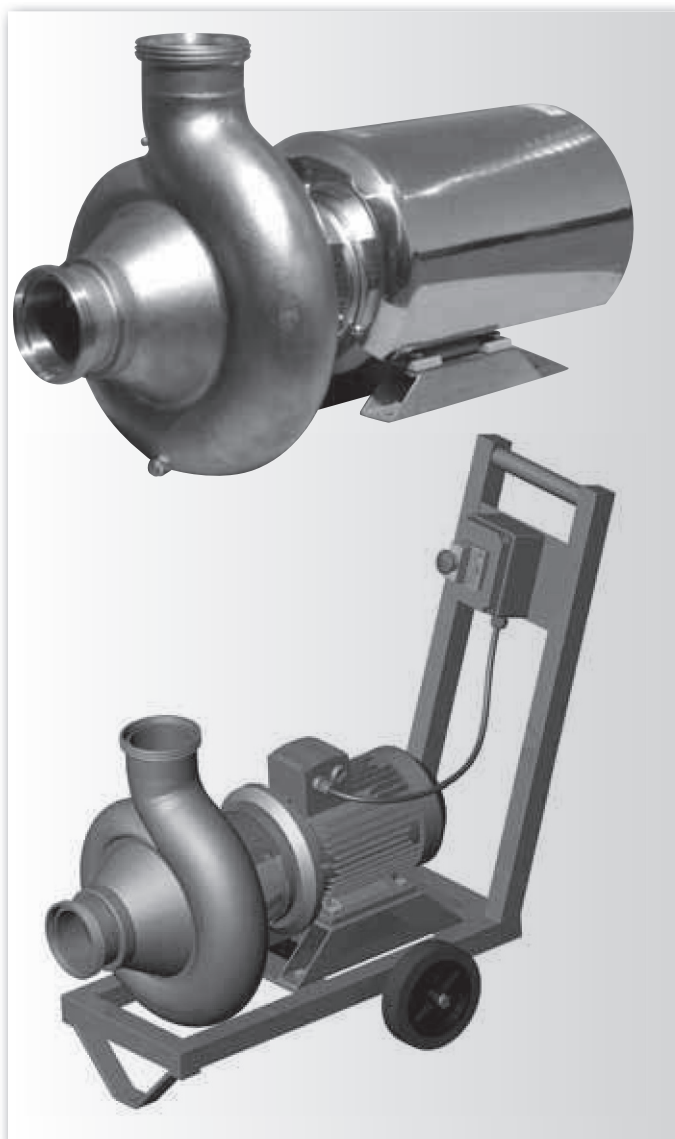
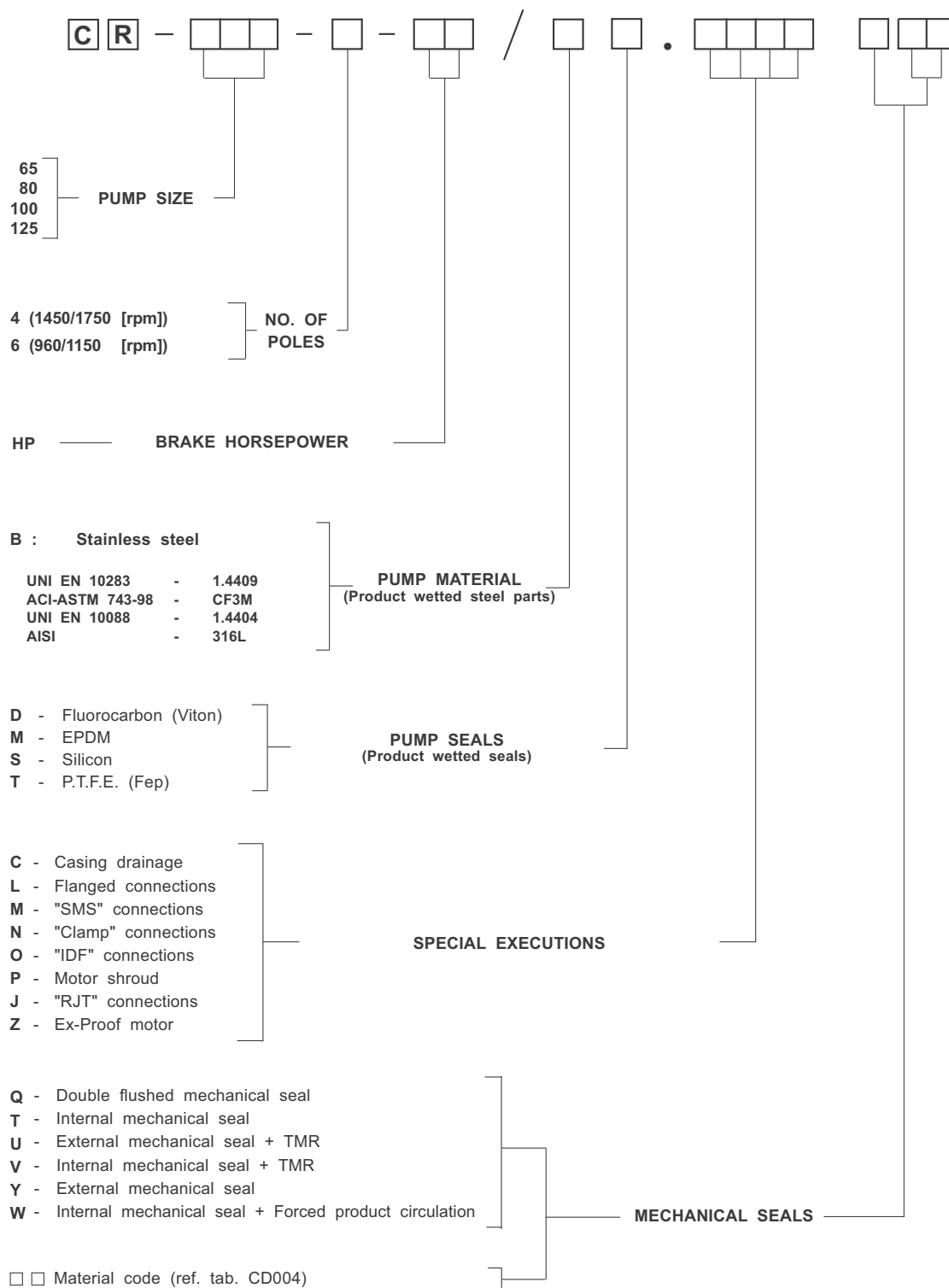
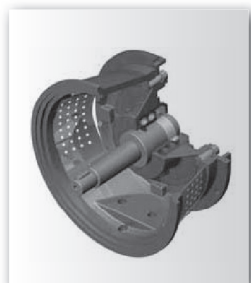
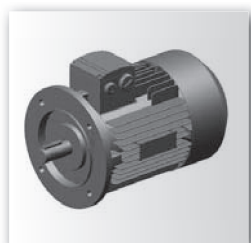


CR

משאבה תעשייתית עם מאיץ לולייני מיוחד במבנה בורגי
 שאינו פוגע במוצר, להולכת חלקיקים (כגון ענבים).
 המשאבה עם מקשר סגור ומנוע נפרד,
 החלקים הרטובים מנירוסטה CF-3M 1.4404 AISI 316L
ספיקות מקס': 200M³/H
עומד מקס': 2.5BAR
מהירות סיבוב מנוע: 960RPM או 1450RPM



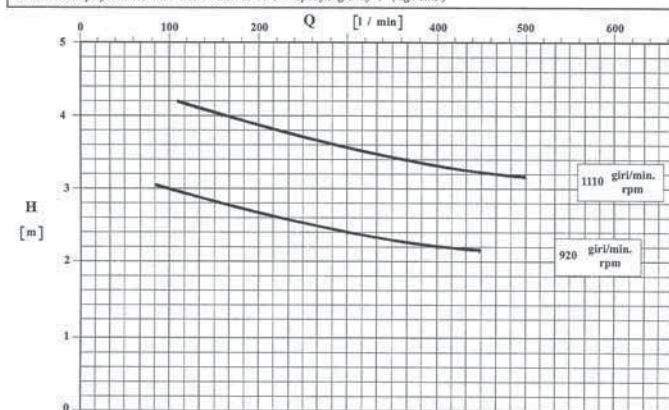


Example: **CR 100-4-7,5 / B.LPT31**

960 / 1150 giri/min

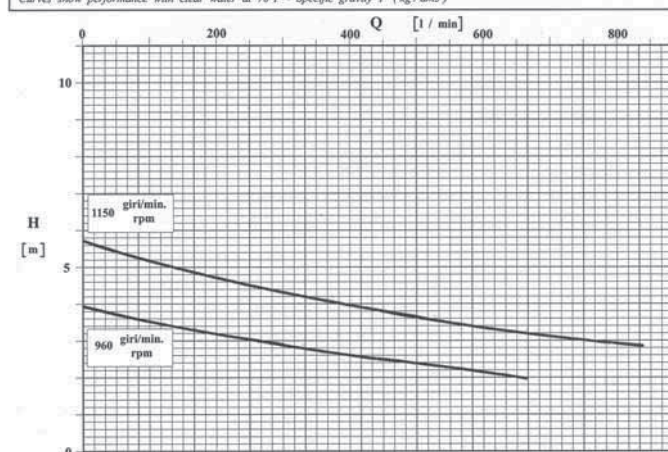
POMPA TIPO			CR 65		n 920/1110		giri / min	
Pump type							r. p. m.	
GRANTE — Impeller								
TIPO	N° di pale n° of vanes	Pass. sferico max. sphere	Ø max max. diameter	Ø min min. diameter	Bocche tipo Ports type	Bocca aspir. Suction port	DN	65
APERTA	1 Elica	33 mm	156 mm	— mm	DIN 11851	Bocca mand. Discharge port	DN	65
CARATTERISTICHE DI FUNZIONAMENTO CON ACQUA PULITA A 20°C - PESO SPECIFICO 1 (kg/dm³)								
Curves show performance with clear water at 70°F - Specific gravity 1 (kg/dm³)								

CARATTERISTICHE DI FUNZIONAMENTO CON ACQUA PULITA A 20°C - PESO SPECIFICO 1 (kg/dm³)
Curves show performance with clear water at 70°F - Specific gravity 1 (kg/dm³)



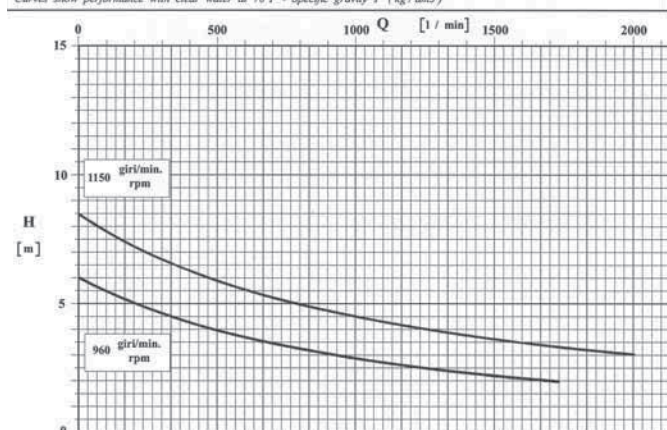
POMPA TIPO			CR 80			n 960/1150		giri / min	
Pump type								r. p. m.	
			GIRANTE → Impeller						
TIPO	N° di pale	Pass. sferico	φ max	φ min	Bocche tipo	Bocca aspir.	DN 80		
Type	n° of vanes	max. sphere	max. diameter	min. diameter	Ports type	Suction port			
APERTA	1 Elica	45 mm	178 mm	— mm	DIN 11851	Bocca mand.	DN 80		
						Discharge port			
CARATTERISTICHE DI FUNZIONAMENTO CON ACQUA PULITA A 20°C - PESO SPECIFICO 1 (kg / dm ³)									
Curves show performance with clear water at 70°F - Specific gravity 1 (kg / dm ³)									

CARATTERISTICHE DI FUNZIONAMENTO CON ACQUA PULITA A 20°C - PESO SPECIFICO 1 (kg/dm³)
Curves show performance with clear water at 70°F - Specific gravity 1 (kg/dm³)



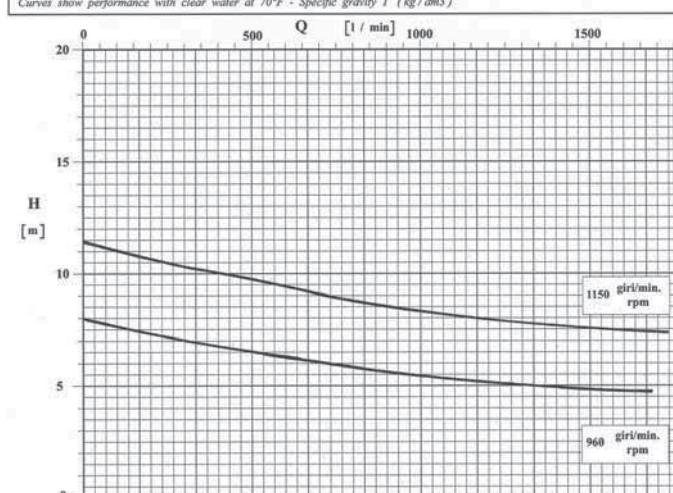
POMPA TIPO			CR 100		n 960/1150		giri / min	
Pump type							r. p. m.	
GIRANTE — Impeller								
TIPO	N° di pale	Pass. sferico	φ max	φ min	Bocche tipo	Bocca aspir.	DN 100	
Type	n° of vane	max. sphere	max. diameter	min. diameter	Ports type	Suction port		
APERTA	1 Elica	58 mm	210 mm	— mm	DIN 11851	Bocca mand.	DN 100	
						Discharge port		
CARATTERISTICHE DI FUNZIONAMENTO CON ACQUA PULITA A 20°C - PESO SPECIFICO 1 (kg/dm3)								
Curves show performance with clear water at 70°F - Specific gravity 1 (kg/dm3)								

CARATTERISTICHE DI FUNZIONAMENTO CON ACQUA PULITA A 20°C - PESO SPECIFICO 1 (kg/dm³)
Curves show performance with clear water at 70°F - Specific gravity 1 (kg/dm³)



POMPA TIPO			CR 125		n 960/1150		giri / min	
Pump type							r. p. m.	
GIRANTE — Impeller								
TIPO	N° di pale	Pass. sferico	Ø max	Ø min	Bocche tipo	Bocca aspir.	DN 125	
Type	n° of vanes	max. sphere	max. diameter	min. diameter	Ports type	Suction port		
APERTA	1 Elica	63 mm	260 mm	— mm	DIN 11851	Bocca mand.	DN 125	
						Discharge port		
CARATTERISTICHE DI FUNZIONAMENTO CON ACQUA PULITA A 20°C - PESO SPECIFICO 1 (kg / dm ³)								
Caract. show performance with clear water at 20°C - Specific gravity 1 (kg / dm ³)								

CARATTERISTICHE DI FUNZIONAMENTO CON ACQUA PULITA A 20°C - PESO SPECIFICO 1 (kg/dm³)
Curves show performance with clear water at 70°F - Specific gravity 1 (kg/dm³)





ש.אל.
ציד טכני בע"מ

משאבות צנטריפוגליות סיטריות נירוסטה 316

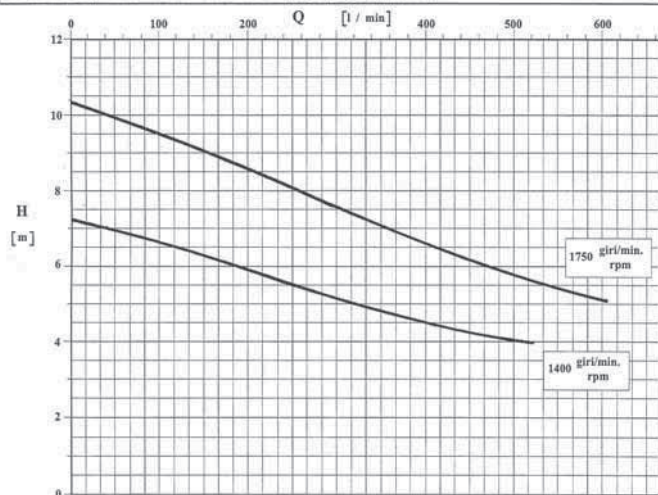
www.csf.it



CR

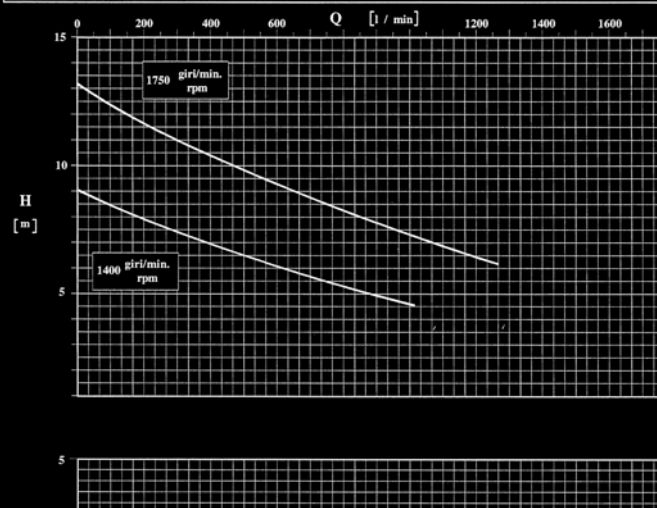
POMPA TIPO		CR 65			n	1400/1750	giri / min r. p. m.	
Pump type								
GIRANTE — Impeller								
TIPO	N° di pale N° of vanes	Pass. sferico max. sphere	Ø max max. diameter	Ø min min. diameter	Bocche tipo Ports type	Bocca aspir. Suction port	DN 65	
APERTA	1 Elica	33 mm	156 mm	— mm	DIN 11851	Bocca mand. Discharge port	DN 65	
CARATTERISTICHE DI FUNZIONAMENTO CON ACQUA PULITA A 20°C - PESO SPECIFICO 1 (kg/dm3) Curves show performance with clear water at 70°F - Specific gravity 1 (kg/dm3)								

CARATTERISTICHE DI FUNZIONAMENTO CON ACQUA PULITA A 20°C - PESO SPECIFICO 1 (kg/dm³)
Curves show performance with clear water at 70°F - Specific gravity 1 (kg/dm³)



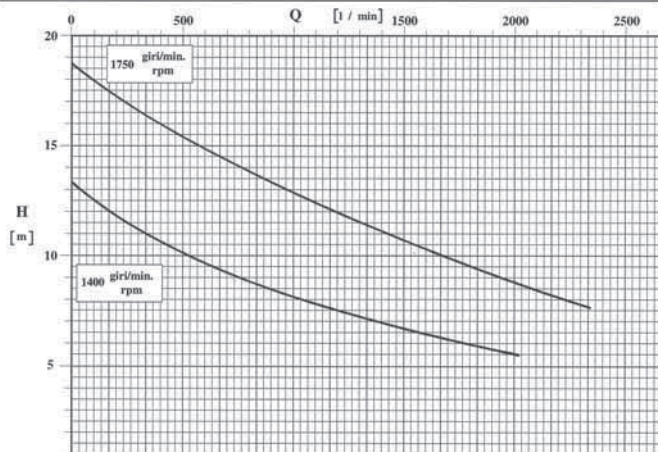
POMPA TIPO Pump type			CR 80			n 1450/1750		giri / min r. p. m.
GIRANTE — Impeller								
TIPO Type	N° di pale n° of vanes	Pass. sferico max. sphere	Ø max max. diameter	Ø min min. diameter	Bocche tipo Ports type	Bocca aspir. Suction port	DN 80	
APERTA	1 Elica	45 mm	178 mm	— mm	DIN 11851	Bocca mand. Discharge port	DN 80	
CARATTERISTICHE DI FUNZIONAMENTO CON ACQUA PULITA A 20°C - PESO SPECIFICO 1 (kg/dm³) Curves show performance with clear water at 70°F - Specific gravity 1 (kg/dm³)								

CARATTERISTICHE DI FUNZIONAMENTO CON ACQUA PULITA A 20°C - PESO SPECIFICO 1 (kg/dm³)
Curves show performance with clear water at 70°F - Specific gravity 1 (kg/dm³)



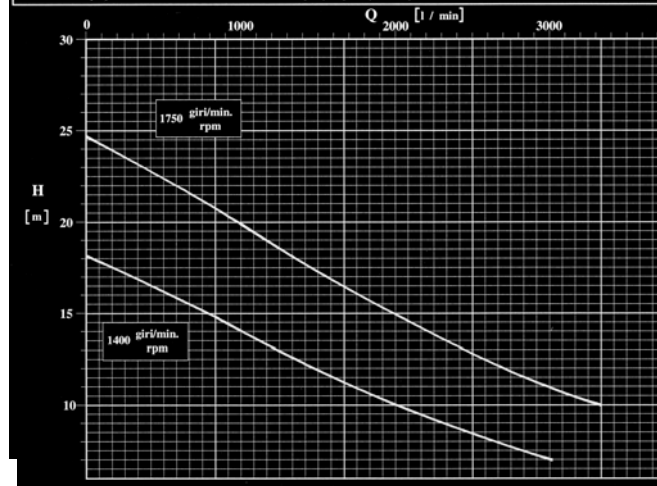
POMPA TIPO			CR 100			n	1450/1750	giri / min r. p. m.
Pump type								
GIRANTE — Impeller								
TIPO Type	N° di pale n° of vane	Pass. sferico max. sphere	Ø max max. diameter	Ø min min. diameter	Bocche tipo Ports type	Bocca aspir. Suction port	DN 100	
APERTA	1 Elica	58 mm	210 mm	--- mm	DIN 11851	Bocca mand. Discharge port	DN 100	
CARATTERISTICHE DI FUNZIONAMENTO CON ACQUA PULITA A 20°C - PESO SPECIFICO 1 (kg/dm³)								
Curves show performance with clear water at 70°F - Specific gravity 1 (kg/dm³)								

CARATTERISTICHE DI FUNZIONAMENTO CON ACQUA PULITA A 20°C - PESO SPECIFICO 1 (kg/dm³)
Curves show performance with clear water at 70°F - Specific gravity 1 (kg/dm³)



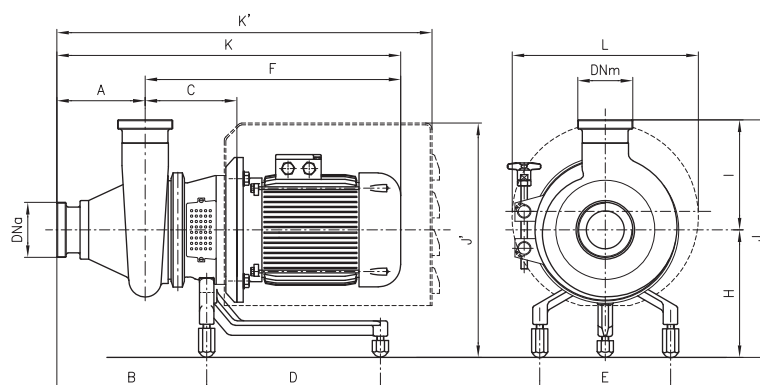
POMPA TIPO					CR 125		n	1450/1750	giri / min
Pump type									r. p. m.
GIRANTE — Impeller									
TIPO	N° di pale n° of vanes	Pass. sferico max. sphere	Ø max max. diameter	Ø min min. diameter	Bocche tipo Ports type	Bocca aspir. Suction port	DN 125		
APERTA	1 Elica	63 mm	260 mm	— mm	DIN 11851	Bocca mand. Discharge port	DN 125		
CARATTERISTICHE DI FUNZIONAMENTO CON ACQUA PULITA A 20°C - PESO SPECIFICO 1 (kg/dm³)									
Curves show performance with clear water at 70°F - Specific gravity 1 (kg/dm³)									

CARATTERISTICHE DI FUNZIONAMENTO CON ACQUA PULITA A 20°C - PESO SPECIFICO 1 (kg/dm³)
Curves show performance with clear water at 70°F - Specific gravity 1 (kg/dm³)



MOTOR POWER FROM 0,55 kW TO 4 kW (SIZE IEC 80-112)

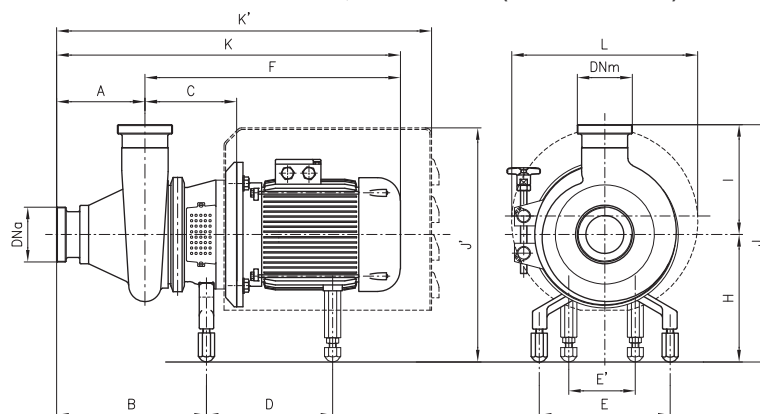
CR



DN = DIN 11851 male threaded connection - Dimensions not binding - exec. with standard IEC/EN motors

DN - DIN Female threaded connection - Dimensions not drilling - Excs. with standard IEC/EN motors																					
Pumps	1450 rpm	kW	DNa	DNm	A	B	C	D	E	E'	F	H	K	K'	I	J	J'	L	Weight kg		
CR 65		0,55	65	65	151	257	158	230	225	-	392	208	543	657	190	398	374	302			
		0,75									437		588								
		1,1																			
CR 80 <td>1,5</td> <td rowspan="3">80</td> <td rowspan="3">80</td> <td rowspan="3">181</td> <td rowspan="3">297</td> <td rowspan="3">168</td> <td rowspan="3">300</td> <td rowspan="3">225</td> <td rowspan="3">-</td> <td>452</td> <td rowspan="3">213</td> <td>632</td> <td rowspan="3">699</td> <td rowspan="3">245</td> <td rowspan="3">458</td> <td rowspan="3">379</td> <td rowspan="3">302</td> <td></td>		1,5	80	80	181	297	168	300	225	-	452	213	632	699	245	458	379	302			
	2,2	508									690		767						475	398	
	3																				
CR 100 <td>4</td> <td rowspan="3">100</td> <td rowspan="3">100</td> <td rowspan="3">205</td> <td rowspan="3">337</td> <td rowspan="3">202</td> <td rowspan="3">300</td> <td rowspan="3">225</td> <td rowspan="3">-</td> <td>536</td> <td rowspan="3">238</td> <td>741</td> <td rowspan="3">824</td> <td rowspan="3">296</td> <td rowspan="3">534</td> <td rowspan="3">534</td> <td rowspan="3">302</td> <td></td>	4	100	100	205	337	202	300	225	-	536	238	741	824	296	534	534	302				
	2,2																				
	3																				
		4																			

MOTOR POWER FROM 5,5 kW TO 22 kW (SIZE IEC 132-180)



DN = DIN 11851 male threaded connection - Dimensions not binding - exec. with standard IEC/EN motors

Pumps		kW	DNa	DNm	A	B	C	D	E	E'	F	H	K	K'	I	J	J'	L	Weight kg
CR 100	1450 rpm	5,5	100	100	205	325	204	333	225	115	576	238	784	848	294	526	456	370	
		7,5				326	249	453		140	727	247	932	1105		532	528	360	
		11																	
		15																	
CR 125	1450 rpm	5,5	125	125	232	370	230	317	225	115	604	238	836	900	346	584	455		
		7,5																	
		11					434			140	748		980	1035		593	504	471	
		15					270					247	1062	1268					
		18,5								279	830						579		
		22																	

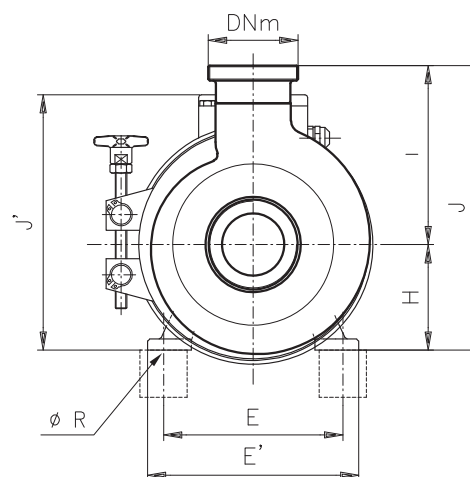
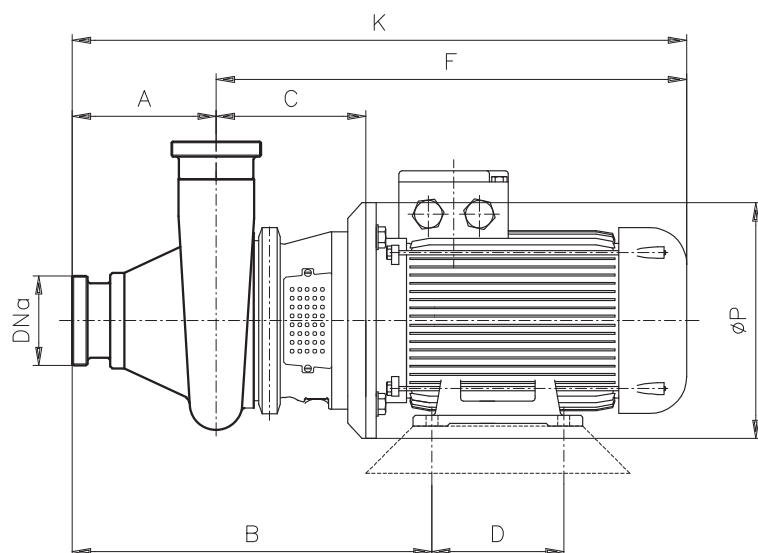
Rev. 00



שאל
ציוד מכני בע"מ

משאבות צנטריפוגליות סיטריות נירוסטה 316

www.csf.it



CR

DN = DIN 11851 male threaded connection - Dimensions not binding - exec. with standard IEC/EN motors

DN – DN 150 male threaded connection – Dimensions not binding – Excl. with standard IEC/EN motors																					
Pumps		kW	DNa	DNm	A	B	C	D	E	E'	F	H	K	I	J	J'	ØP	ØR	Weight kg		
CR 65	1450 rpm	0,55	65	65	151	360	158	100	125	150	392	80	543	190	270	200	200	10			
		0,75																			
		1,1				362			140	165	437	90	588		280	218					
CR 80		1,1	80	80	181	406	168	140	125	140	165	452	90	632	245	335	218	200	10		
		1,5																			
		2,2																			
CR 100		3	100	100	205	413	202	140	140	160	196	481	100	663	294	345	235	250	12		
		4																			
		2,2																			
		3																			
CR 125		4	125	125	232	477	230	140	190	240	515	112	720	346	406	331	250	12			
		5,5																			
		7,5																			
		11																			
CR 125		15	125	125	232	497	270	140	216	256	576	132	781	346	426	299	300	12			
		18,5																			
	22																				