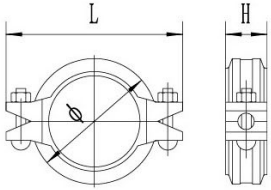


# XGQT01

## Rigid Coupling



Our tongue and groove design rigid coupling can be used where rigidity is required. The built-in teeth firmly grasp the pipe ends to eliminate undesired flex. The specific items list shall be subject to the public notice of FM and UL website.

Nominal Size mm/in	Pipe O.D mm/in	Working Pressure PSI/MPa	Bolt Size No.-Size mm	Dimensions mm/in			UL	FM
				Ø	L	H		
25 1	33.7 1.327	500 3.45	2-M10x45	60 2.362	102 4.016	45 1.772	•	•
32 1¼	42.4 1.669	500 3.45	2-M10x45	70 2.756	106 4.173	44 1.732	•	•
40 1½	48.3 1.900	500 3.45	2-M10x45	73 2.874	108 4.252	44 1.732	•	•
50 2	60.3 2.375	500 3.45	2-M10x55	87 3.425	123 4.843	44 1.732	•	•
65 2½	73.0 2.875	500 3.45	2-M10x55	100 3.937	138 5.433	44 1.732	•	•
65 2½	76.1 3.000	500 3.45	2-M10x55	103 4.055	142 5.591	45 1.772	•	•
80 3	88.9 3.500	500 3.45	2-M12x60	117 4.606	166 6.535	45 1.772	•	•
100 4	114.3 4.500	500 3.45	2-M12x65	139 5.472	190 7.480	49 1.929	•	•
125 5	139.7 5.500	400 2.75	2-M12x75	168 6.614	218 8.583	49 1.929	•	•
150 6	165.1 6.500	400 2.75	2-M12x75	193 7.598	241 9.488	49 1.929	•	•
150 6	168.3 6.625	400 2.75	2-M12x75	198.5 7.815	249 9.803	50 1.969	•	•
200 8	219.1 8.625	300 2.07	2-M16x85	253 9.961	320 12.598	59 2.323	•	•
250 10	273 10.748	300 2.07	2-M22x130	335 13.189	426 16.772	68 2.677	•	•
300 12	323.9 12.752	300 2.07	2-M22x130	380 14.96	470 18.504	65 2.559	•	•