

Model No.: 115A

Name : Liquid filled Pressure Gauge

Application : Used In Hydraulic and Pneumatic Systems , Compressors , Regulator and industry machine , and suitable for fluid medium or Gaseous which does not clog connection port or corrode copper alloy . anti-shock .

Specifications :

Size :1.5" (40mm) ,2"(50mm), 2.5"(63mm) , 3"(75mm), 4" (100mm)

Accuracy : +-2.5% of full scales for 1.5"(40mm)

+-1.6% of full scales for 2"(50mm), 2.5"(63mm) , 3"(75mm), 4" (100mm)

Range available (no stock) :

-30"Hg-0 (vacuum)

-30"Hg-0-6000psi (Compound)

0- 15psi ~ 6000psi (pressure)

Working Pressure :

Steady : 3/4 of full scale

Fluctuating : 2/3 of full scale

Short time : full scale .

Operating Temperature

Ambient: -4°F to 140°F (-20°C to +60°C)

Media: max. 140°F (+60°C)

Service Fluid : compatible gases and liquids

Housing: stainless steel case and crimped ring .

Windows : polycarbonate

Liquid filled : Glycerin

Bourdon Tube : Copper- alloy 111AR

30"Hg-800psi C-Type

800 psi to 6000 psi Coil -Type

Movement : Semi-copper alloy

Connection : brass

1/4" for 2.5"(63mm) ,

1/2" for 4"(100mm),

Socket : two pieces

Thread : BSP , BSPT, NPT ,or metric thread.

Dials: aluminum

White background

Black or black and red lettering .

With customer logo is available .

Scale Unit : Bar or Bar+Psi

Optional extras

Movement can be changed to be full brass

Connection also can be Chrome or Nickel plated.

Scale unit can use KPa , MPa,Kgf/cm2, kg/cm2, torr, atm



115AL

115AR



115AB

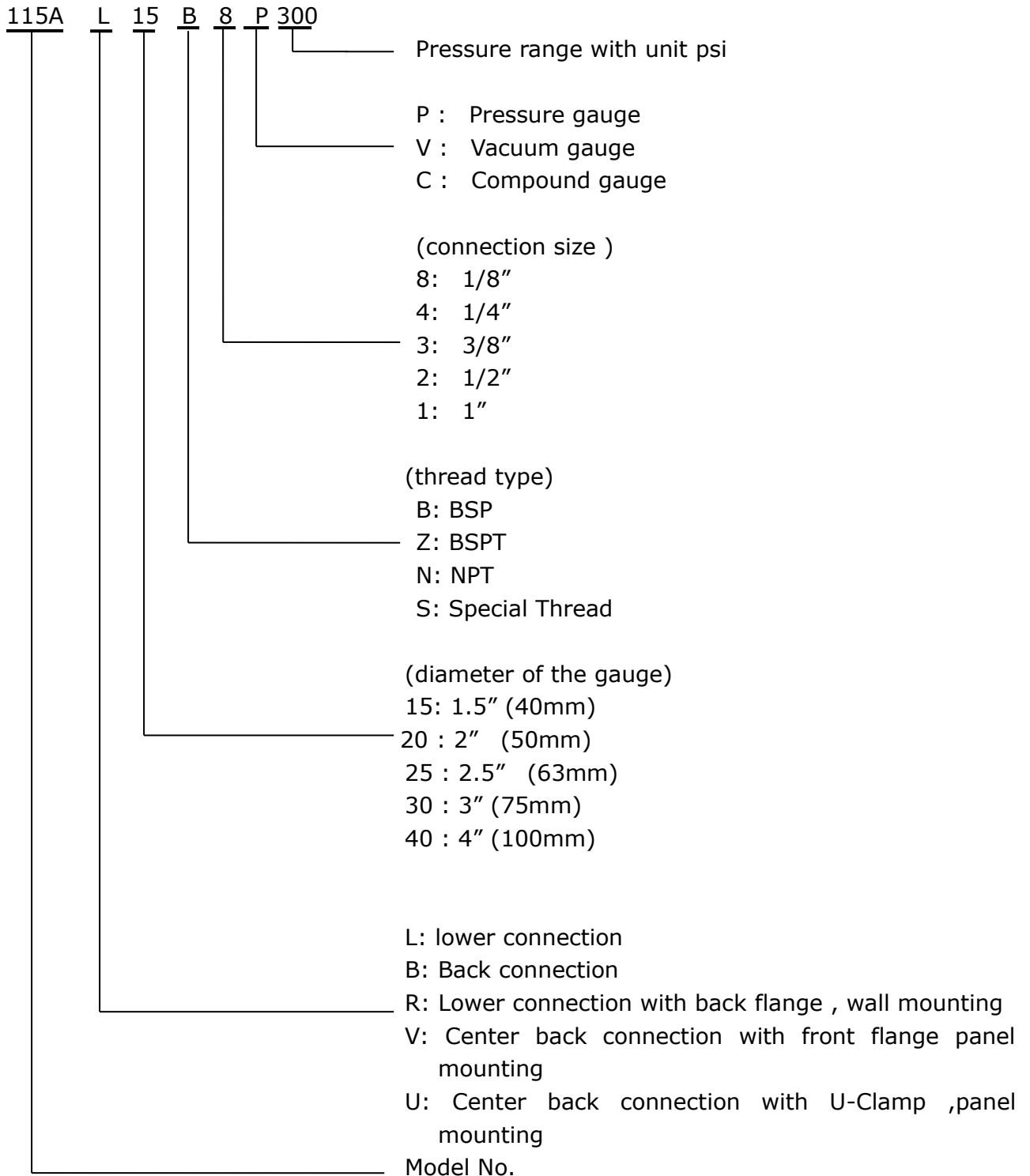
115AV



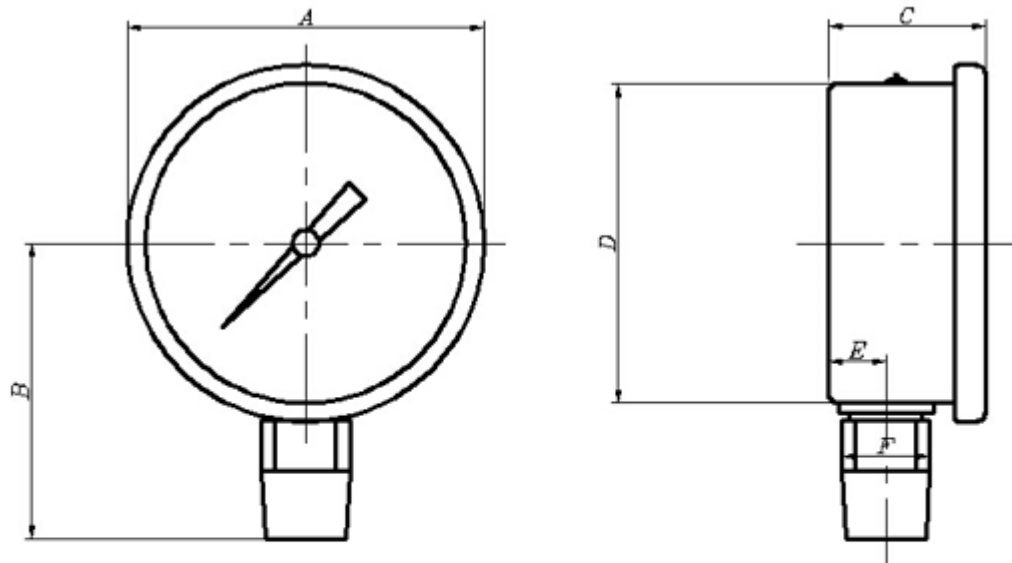
115AU1

Rubber cover available for 2.5"(63mm) , 4" (100mm),
 Liquid inside can be changed to be silicon oil
 Liquid inside can be filled by customer.
 Fill cap can be changed to be with tip .

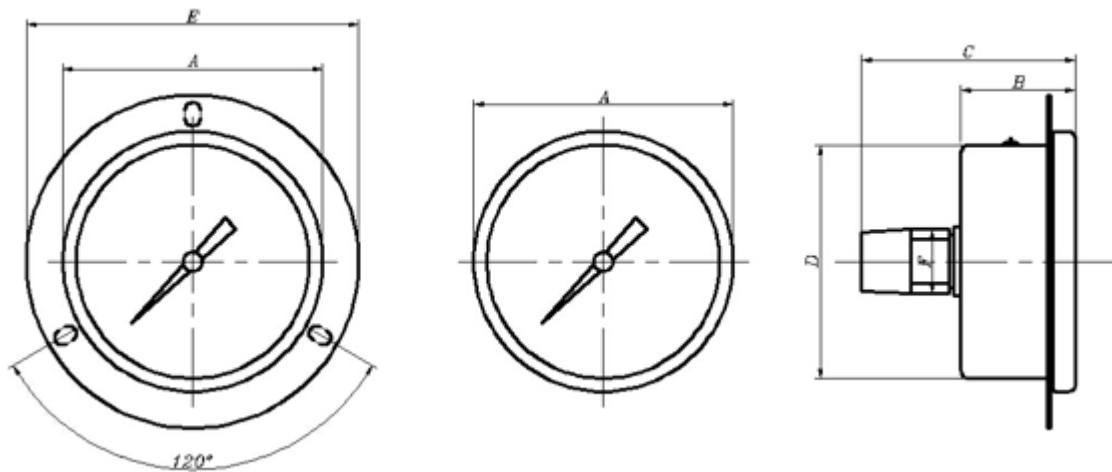
Ordering Part #:(sample)



Dimensions :



<i>DIAL</i>	<i>A</i>	<i>B</i>	<i>C</i>	<i>D</i>	<i>E</i>	<i>F</i>
2"	57±1	50±1	30±1	52±1	10±1	S14
2.5"	68±1	55±1	30±1	61±1	11±1	S14
4"	109±1	83±1	36±1	98±1	17±1	S22



<i>DIAL</i>	<i>A</i>	<i>B</i>	<i>C</i>	<i>D</i>	<i>E</i>	<i>F</i>
1.5"	47±1	25±1	45±1	41±1		S11
2"	57±1	30±1	54±1	52±1		S14
2.5"	68±1	30±1	55±1	61±1	87±1	S14
4"	109±1	36±1	73±1	98±1		