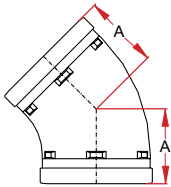


# FITTINGS / Style 64 - 65 - 66 SHORT RADIUS

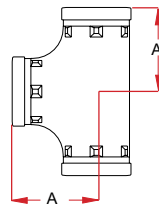
## GROOVED-END FITTINGS

Maximum working pressure: 500 psi  
For fire protection equipment and approved pressure ratings please contact Modgal.

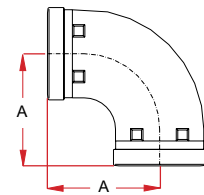
**STYLE 64**  
Elbow 45°



**STYLE 65**  
Equal Tee



**STYLE 66**  
Elbow 90°



Nominal Size (Inches / DN)	Pipe Outside Diameter	Dimension	Weight Lbs	Approvals
		A		
1" / 25	1.315	-	-	-
1¼" / 32	1.660	1.75	0.66	FM / UL LPCB / VDS
1½" / 40	1.900	1.75	0.79	FM / UL LPCB / VDS
2" / 50	2.375	2.01	1.12	FM / UL LPCB / VDS
2½" / 65	2.875	2.24	1.81	FM / UL LPCB
3" OD	3.000	2.24	1.90	FM / UL LPCB / VDS
3" / 80	3.500	2.50	2.56	FM / UL LPCB / VDS
4" / 100	4.500	2.99	3.64	FM / UL LPCB / VDS
5"OD	5.500	2.99	4.08	FM / UL LPCB / VDS
5" / 125	5.563	3.24	6.88	FM / UL LPCB
6" / 150	6.625	3.50	8.60	FM / UL LPCB / VDS
8" / 200	8.625	4.25	16.76	FM / UL VDS
10" / 250	10.750	4.72	36.71	FM / UL VDS
12" / 300	12.750	5.24	51.82	FM / UL VDS

Nominal Size (Inches / DN)	Pipe Outside Diameter	Dimension	Weight Lbs	Approvals
		A		
1" / 25	1.315	2.28	0.79	LPCB / VDS
1¼" / 32	1.660	2.76	1.46	FM / LPCB VDS
1½" / 40	1.900	2.76	1.65	FM / LPCB VDS
2" / 50	2.375	2.76	1.98	FM / UL LPCB / VDS
2½" / 65	2.875	3.03	3.09	FM / UL LPCB
3" OD	3,000	2.99	2.98	FM / UL LPCB / VDS
3" / 80	3.500	3.37	3.97	FM / UL LPCB / VDS
4" / 100	4.500	3.98	5.95	FM / UL LPCB / VDS
5"OD	5,500	3.98	5.84	FM / UL LPCB / VDS
5" / 125	5.563	4.88	11.03	FM / UL LPCB
6" / 150	6.625	5.51	16.01	FM / UL LPCB / VDS
8" / 200	8.625	6.85	30.05	FM / UL LPCB / VDS
10" / 250	10.750	-	-	-
12" / 300	12.750	-	-	-

Nominal Size (Inches / DN)	Pipe Outside Diameter	Dimension	Weight Lbs	Approvals
		A		
1" / 25	1.315	2.28	0.56	LPCB / VDS
1¼" / 32	1.660	2.76	0.92	FM / LPCB VDS
1½" / 40	1.900	2.76	1.12	FM / LPCB VDS
2" / 50	2.375	2.76	1.29	FM / UL LPCB / VDS
2½" / 65	2.875	3.03	1.98	FM / UL LPCB
3" OD	3,000	2.99	2.01	FM / UL LPCB / VDS
3" / 80	3.500	3.37	2.76	FM / UL LPCB / VDS
4" / 100	4.500	3.98	5.73	FM / UL LPCB / VDS
5"OD	5,500	3.98	4.81	FM / UL LPCB / VDS
5" / 125	5.563	4.88	8.82	FM / UL LPCB
6" / 150	6.625	5.51	11.30	FM / UL LPCB / VDS
8" / 200	8.625	6.85	18.31	FM / UL LPCB / VDS
10" / 250	10.750	-	-	-
12" / 300	12.750	-	-	-

For use with higher than stated maximum working pressure, please contact Modgal Metal.

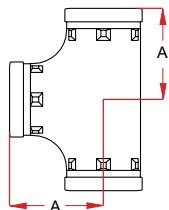
# FITTINGS / Style 05 - 06 LONG RADIUS

## GROOVED-END FITTINGS

Maximum working pressure: 500 psi  
For fire protection equipment and approved pressure ratings please contact Modgal.

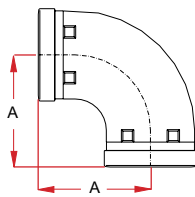
### STYLE 05

Equal Tee



### STYLE 06

Elbow 90°



Nominal Size (Inches / DN)	Pipe Outside Diameter	Dimen- sion	Weight Lbs	Approvals
		A		
1" / 25	1.315	-	-	-
1¼" / 32	1.660	-	-	-
1½" / 40	1.900	-	-	-
2" / 50	2.375	3.25	2.15	FM / UL LPCB / VDS
2½" / 65	2.875	3.74	3.75	FM / UL LPCB / VDS
3" OD	3,000	3.74	3.99	FM / UL LPCB / VDS
3" / 80	3.500	4.25	5.42	FM / UL LPCB
4" / 100	4.500	5.00	8.38	FM / UL LPCB / VDS
5"OD	5,500	5.00	8.82	FM / UL LPCB / VDS
5" / 125	5.563	5.51	14.62	FM / UL LPCB
6" / 150	6.625	6.50	20.18	FM / UL LPCB / VDS
8" / 200	8.625	7.72	36.71	FM / UL LPCB / VDS
10" / 250	10.750	9.02	79.82	FM / UL VDS
12" / 300	12.750	10.00	110.69	UL
14" / 350	14,000	11.10	140.02	-
16" / 400	16,000	12.01	233.73	-

Nominal Size (Inches / DN)	Pipe Outside Diameter	Dimen- sion	Weight Lbs	Approvals
		A		
1" / 25	1.315	-	-	-
1¼" / 32	1.660	-	-	-
1½" / 40	1.900	-	-	-
2" / 50	2.375	3.25	1.57	FM / UL LPCB / VDS
2½" / 65	2.875	3.74	2.60	FM / UL LPCB / VDS
3" OD	3,000	3.74	3.00	FM / UL LPCB
3" / 80	3.500	4.25	3.75	FM / UL LPCB / VDS
4" / 100	4.500	5.00	5.73	FM / UL LPCB / VDS
5"OD	5,500	5.00	5.95	FM / UL LPCB / VDS
5" / 125	5.563	5.51	9.48	FM / UL LPCB
6" / 150	6.625	6.50	12.83	FM / UL LPCB / VDS
8" / 200	8.625	7.72	23.37	FM / UL LPCB / VDS
10" / 250	10.750	9.02	58.65	FM / UL VDS
12" / 300	12.750	10.00	81.59	UL
14" / 350	14,000	11.10	100.33	-
16" / 400	16,000	12.01	176.40	-

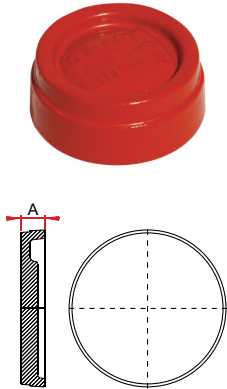
For use with higher than stated maximum working pressure, please contact Modgal Metal.

# FITTINGS / Style 02 - 02D - 41

## GROOVED-END FITTINGS

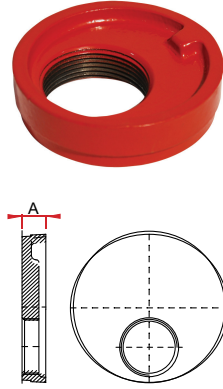
Maximum working pressure: 500 psi  
For fire protection equipment and approved pressure ratings please contact Modgal.

### STYLE 02 End-Cap



Nominal Size (Inches / DN)	Pipe Outside Diameter	Dimen- sion	Weight Lbs	Approvals
		A		
1¼" / 32	1.660	0.94	0.28	FM / UL LPCB / VDS
1½" / 40	1.900	0.98	0.35	FM / UL LPCB / VDS
2" / 50	2.375	0.94	0.47	FM / UL LPCB / VDS
2½" / 65	2.875	0.94	0.73	FM / UL LPCB
3" OD	3,000	0.98	0.79	FM / UL LPCB / VDS
3" / 80	3.500	0.98	1.10	FM / UL LPCB / VDS
4" / 100	4.500	1.10	1.68	FM / UL LPCB / VDS
5" OD	5.500	1.06	3.04	FM / UL LPCB / VDS
5" / 125	5.563	1.02	3.04	FM / UL LPCB
6" / 150	6.625	1.02	3.75	FM / UL LPCB / VDS
8" / 200	8.625	1.22	8.16	FM / UL LPCB / VDS
10" / 250	10.750	1.34	14.27	FM / UL VDS
12" / 300	12.750	1.34	20.29	UL
14" / 350	14,000	1.50	63.72	-
16" / 400	16,000	1.50	82.91	-

### STYLE 02D End-Cap with Drain



Nominal Size (Inches / DN)	Pipe Outside Diameter	Out- let	Dimen- sion	Weight Lbs	Approvals
			A		
1¼" / 32	1.660	-	-	-	-
1½" / 40	1.900	-	-	-	-
2" / 50	2.375	1"	0.94	0.60	VDS
2½" / 65	2.875	1½"	0.96	0.88	FM
3" OD	3,000	1½" 2"	0.98	0.88	FM / UL VDS
3" / 80	3.500	1½" 2"	0.98	1.10	FM / UL VDS
4" / 100	4.500	1½" 2"	1.10	1.98	FM / UL VDS
5" OD	5.500	1½" 2"	1.02	2.98	FM / VDS
5" / 125	5.563	1½" 2"	1.02	2.98	FM
6" / 150	6.625	1½" 2"	1.02	4.28	FM / UL VDS
8" / 200	8.625	1½" 2"	1.22	8.45	FM / UL VDS
10" / 250	10.750	-	-	-	-
12" / 300	12.750	-	-	-	-

### STYLE 41 Elbow 11¼°



Nominal Size (Inches / DN)	Pipe Outside Diameter	Dimen- sion	Weight Lbs	Approvals
		A		
1¼" / 32	1.660	1.38	0.57	FM
1½" / 40	1.900	1.38	0.68	FM
2" / 50	2.375	1.38	0.88	FM
2½" / 65	2.875	1.50	1.32	FM
3" OD	3,000	1.50	1.32	FM
3" / 80	3.500	1.50	2.01	FM
4" / 100	4.500	1.73	2.65	FM
5" OD	5.500	2.01	4.41	FM
5" / 125	5.563	2.01	4.41	FM
6" / 150	6.625	2.01	6.84	FM
8" / 200	8.625	2.01	9.26	FM

For use with higher than stated maximum working pressure, please contact Modgal Metal.

# FITTINGS / Style 42 - 91

## GROOVED-END FITTINGS

Maximum working pressure: 500 psi  
For fire protection equipment and approved pressure ratings please contact Modgal.

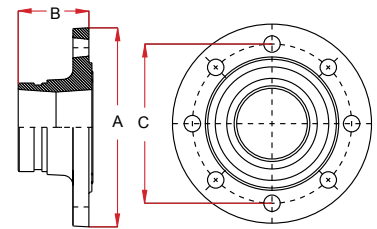
### STYLE 42

Elbow 22½°



### STYLE 91

Grooved Flange Adaptor



Nominal Size (Inches / DN)	Pipe Outside Diameter	Dimen- sion	Weight Lbs	Approvals
		A		
1¼" / 32	1.660	1.77	0.66	-
1½" / 40	1.900	1.77	0.75	FM
2" / 50	2.375	1.89	1.17	FM
2½" / 65	2.875	2.01	1.83	FM
3" OD	3,000	2.01	1.83	FM
3" / 80	3.500	2.24	2.43	FM
4" / 100	4.500	2.87	4.19	FM
5" OD	5.500	3.11	6.17	FM
5" / 125	5.563	2.87	6.17	FM
6" / 150	6.625	3.11	10.45	FM
8" / 200	8.625	3.86	16.32	FM

Nominal Size (Inches / DN)	Pipe Outside Diameter	Dimensions			Standards		Bolts		Weight Lbs	Approvals
		A	B	C	ISO 7005-2	ANSI	Qty.	Size		
2" / 50	2.375	6.50	2.56	4.75	PN10 PN16	-	4	M16	3.31	FM / UL / VDS
2½" / 65	2.875	7.28	2.44	5.50	-	ASA 150	4	5/8"	4.08	UL
3" OD	3,000	7.28	2.56	5.50	PN10 PN16	-	4	M16	3.35	FM / UL / VDS
3" / 80	3.500	7.87	2.56	6.00	PN10 PN16	-	8	M16	8.33	FM / UL / VDS
3" / 80	3.500	7.56	2.80	6.00	-	ASA 150	4	5/8"	8.29	FM / UL
4" / 100	4.500	9.02	3.90	7.50	-	ASA 150	8	5/8"	14.55	FM / UL
4" / 100	4.500	9.01	2.76	7.50	PN10 PN16	-	8	M16	12.57	FM / UL / VDS
5" OD	5.500	9.84	2.76	8.50	PN10 PN16	-	8	M16	12.57	FM / UL / VDS
5" / 125	5.563	9.84	2.76	8.50	-	ASA 150	8	M16	12.57	-
6" / 150	6.625	11.18	2.68	9.45	-	ASA 150	8	¾"	22.27	FM / UL
6" / 150	6.625	11.10	2.76	9.50	PN10 PN16	-	8	M20	22.27	FM / UL / VDS
8" / 200	8.625	13.39	3.15	11.75	PN16	-	12	M20	38.80	FM / UL / VDS
8" / 200	8.625	13.50	4.27	11.61	-	ASA 150	8	¾"	26.68	FM / UL

For use with higher than stated maximum working pressure, please contact Modgal Metal.