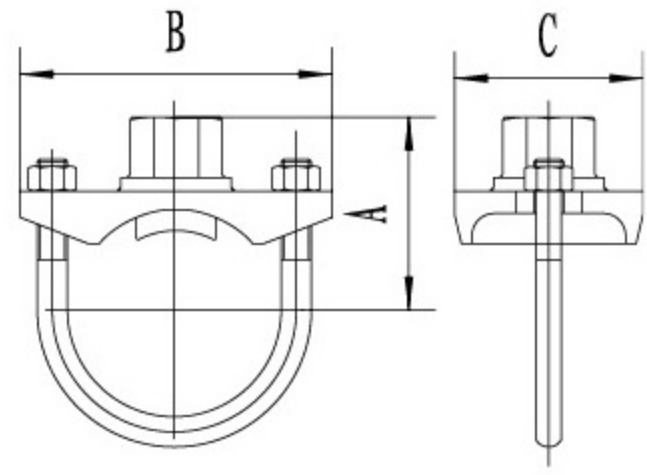


XGQT03U

U-Bolted Mechanical Tee Threaded



The specific itmes list shall be subject to the public notice of FM and UL website.

Nominal Size mm/in	Pipe O.D mm/in	Working Pressure PSI/Mpa	U Bolt Size NO.-Size mm	Dimensions mm/in			Hole cutting dimensions mm/in	UL	FM
				A	B	C			
25x15 1x1/2	33.7x21.3 1.327x0.839	300 2.07	M10x25	49 1.929	76 2.992	43 1.654	24 0.945	•	•
25x20 1x3/4	33.7x26.9 1.327x1.059	300 2.07	M10x25	58 2.283	84 3.307	43 1.693	24 0.945	•	•
32x15 1 1/4x1/2	42.4x21.3 1.669x0.839	300 2.07	M10x28.5	43 1.693	90 3.543	56 2.205	30 1.181	•	•
32x20 1 1/4x3/4	42.4x26.9 1.669x1.059	300 2.07	M10x28.5	45 1.772	90 3.543	56 2.205	30 1.181	•	•
32x25 1 1/4x1	42.4x33.7 1.669x1.327	300 2.07	M10x28.5	50 1.969	90 3.543	56 2.205	30 1.181	•	•
40x15 1 1/2x1/2	48.3x21.3 1.900x0.839	300 2.07	M10x28.5	43 1.693	93 3.661	59 2.323	30 1.181	•	•
40x20 1 1/2x3/4	48.3x26.9 1.900x1.059	300 2.07	M10x28.5	54 2.126	93 3.661	59 2.323	30 1.181	•	•
40x25 1 1/2x1	48.3x33.7 1.900x1.327	300 2.07	M10x28.5	58 2.283	93 3.661	59 2.323	30 1.181	•	•
50x15 2x1/2	60.3x21.3 2.375x0.839	300 2.07	M10x30	54 2.126	96 3.780	59 2.323	30 1.181	•	•
50x20 2x3/4	60.3x26.9 2.375x1.059	300 2.07	M10x30	56 2.205	96 3.780	59 2.323	30 1.181	•	•
50x25 2x1	60.3x33.7 2.375x1.327	300 2.07	M10x30	66 2.598	96 3.780	59 2.323	30 1.181	•	•
65x15	73.1x21.3 2.878x0.839	300 2.07	M10x30	60 2.362	110 4.331	59 2.323	30 1.181	•	•
65x20	73.1x26.9 2.878x1.059	300 2.07	M10x30	63 2.480	110 4.331	59 2.323	30 1.181	•	•
65x25	73.1x33.7 2.878.x1.327	300 2.07	M10x30	70 2.756	110 4.331	59 2.323	30 1.181	•	•
65x15	76.1x21.3 2.996x0.839	300 2.07	M10x30	61 2.402	110 4.331	59 2.323	30 1.181	•	•
65x20	76.1x26.9 2.996x1.059	300 2.07	M10x30	67 2.638	110 4.331	59 2.323	30 1.181	•	•
65x25	76.1x33.7 2.847x1.327	300 2.07	M10x30	74 2.913	110 4.331	59 2.323	30 1.181	•	•