

Principal Applications

For heavy duty applications requiring safe, leak-free, continuous flow of aggressive chemicals, acids, solvents, alkalis, sterile and chilled fluids.

Wetted Materials

Standard EPDM O Ring, optional Viton
PP encapsulated magnet, PVDF optional
PP pump housing, PVDF optional
PPS spindle housing
Alumina ceramic spindle & thrust washers

Features

Manufactured in chemical resistant thermo-plastics – entirely non-metallic
Magnetic couplings provide an energy efficient thermal shield,
minimising heat transfer to the pumped fluids
IP55 standard motor housing
EEXD and high SG versions available

NEMP200/12

230V 1Ph 50Hz

415V 3Ph 50Hz

110/120V 50/60 Hz versions available

Port Details

1 ½" BSP M inlet 1" BSP M outlet

1 ½" BSP M inlet 1" BSP M outlet



ITT

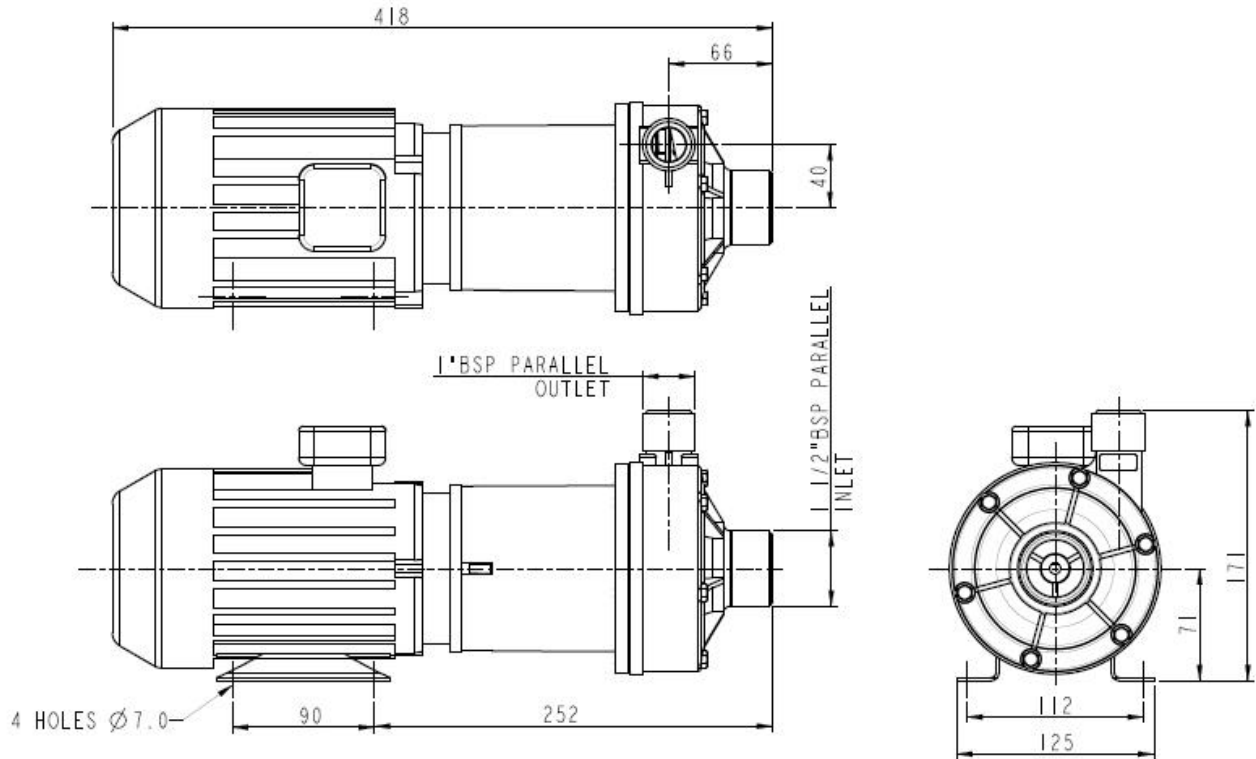
Engineered for life



Installation

Drawings not to scale
 Dimensions in millimetres

NEMP200/12

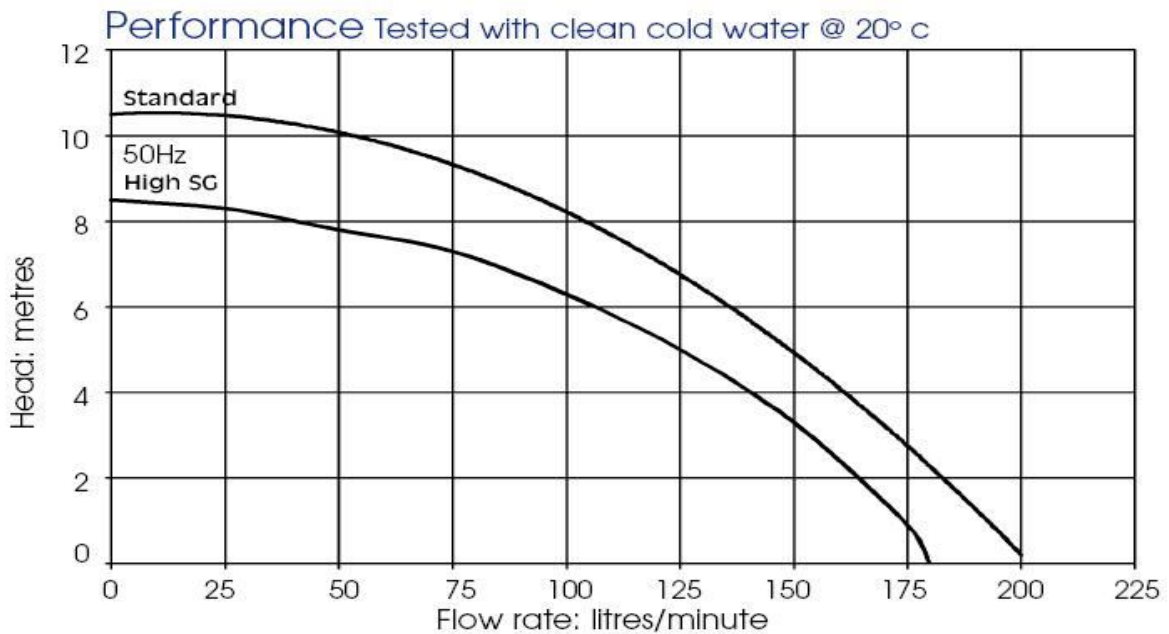


Specification

Model	Overall height (mm)	Overall length (mm)	Overall width (mm)	Weight (kg)	Max body pressure (bar)	Run-out flow rate (l/min)	Closed valve head (m)	Temp range (degC)	*Max specific gravity	Motor output (watts)
NEMP200/12	171	418	125	9.6	2.0	200	10.5	-20 to +85	1.2	550

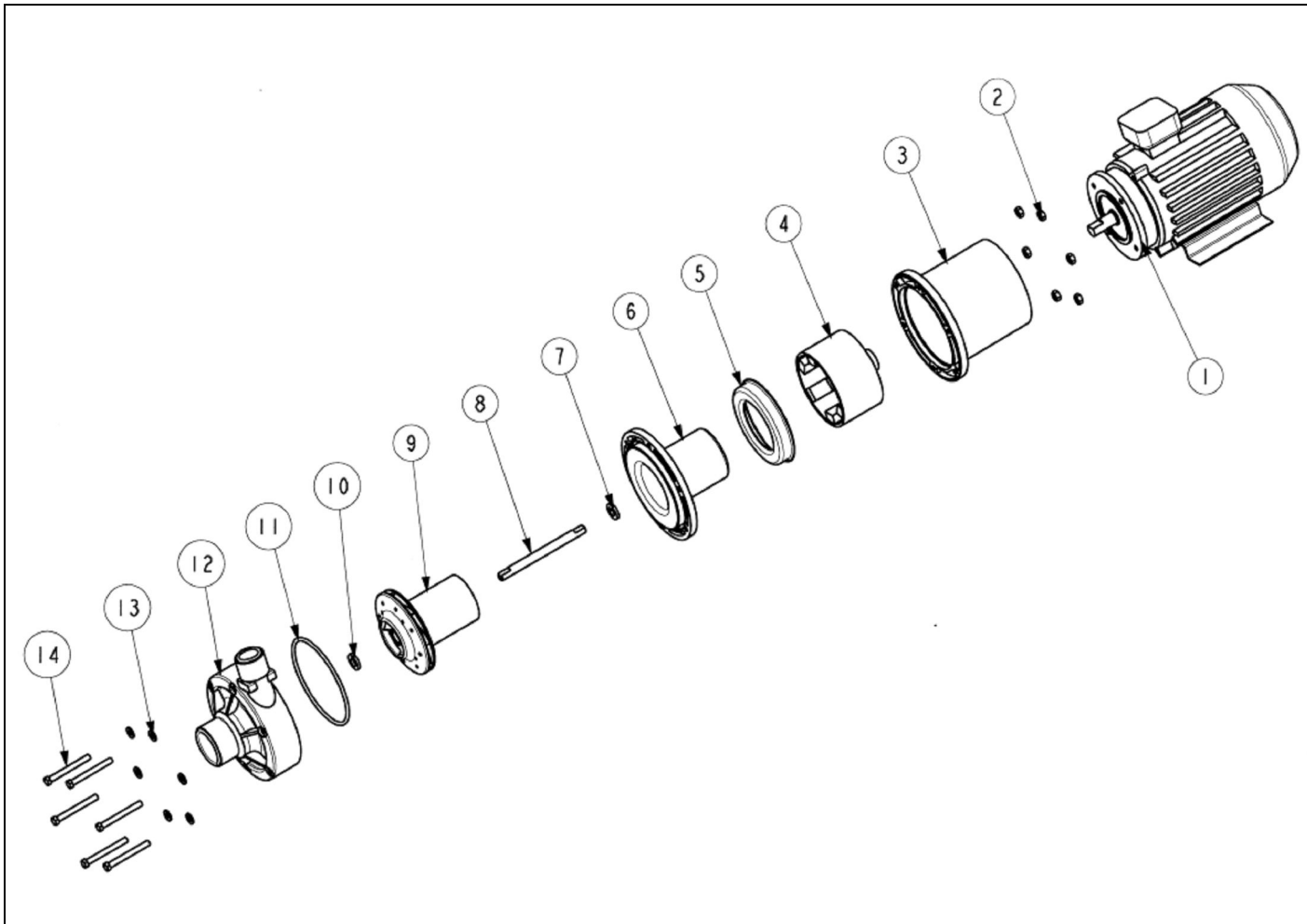
*Assuming maximum viscosity of 30cp. Refer to Totton Pumps for higher viscosities and specific gravities

Performance



NOTE: These magnetically coupled pumps are designed for use with clean fluids. Solids will cause jamming. Abrasives will reduce pump life & invalidate the warranty. NEMP pumps are not self priming & are not designed to run dry. The company reserves the right to change specifications

Part List



Item Number	Description	Quantity	Part Number				
			008844 (110V 1Ph 50Hz)	008831 (110V 1Ph 60Hz)	008825 (230V 1Ph 50Hz)	008826 (400V 3Ph 50Hz)	008847 (400V 3Ph 60Hz)
1	Motor	1					
2	Nut	6	032105				
3	Adaptor	1	018381				
4	Drive Magnet	1	008646				
5	Support Plate	1	008352				
6	Spindle Housing	1	018317 (PPS)	008355 (PVDF)	008354 (PP)		
7	D Washer	1	008298				
8	Spindle	1	008351				
9	Impeller	1	038601 (PP 50Hz)	018671 (PP 60Hz)	018627 (PP High SG)		
			018644 (PVDF 50Hz)	018672 (PVDF 60Hz)	018672 (PVDF High SG)		
10	D Washer	1	008298				
11	O Ring	1	008277 (EPDM)		008235 (Viton)		
12	Pump Body	1	018380 (PP)		008359 (PVDF)		
13	Nut	1	001568				
14	Screw	6	001792				

Totton Pumps Ltd.

Tel: +44 (0)23 8066 6685

Fax: +44 (0)23 8066 6880

Email: info@totton-pumps.com

Web: www.totton-pumps.co.uk